



Innox Ltd
50c Kereone Road, RD1,
Morrinsville, Waikato
07 7880140
WWW: www.innox.co.nz
E-mail: orders@innox.co.nz

Contents

EFH - EXPANDING FERRULE HALF (STD)	11
IEFH - INNOX EXPANDING FERRULE HALF	11
ISEFH - INNOX SHORT EXPANDING FERRULE HALF (6MM LONG)	12
WEFHS - WELD END FERRULE HALF SHORT	12
WEFHL - WELD END FERRULE HALF LONG	13
RF - REDUCING FERRULE HALF (EXPANDING TYPE)	13
GEAEFH - GEA EXPANDING FERRULE HALF	14
SCD - SHEDULE TUBE FERRULE HALF EXPANDING TYPE	14
FSB - FERRULE SEAL BLACK (EPDM SUITABLE FOR -40 TO 120 DEGREE C)	15
FSS - FERRULE SILICONE SEAL CLEAR (SILICONE SUITABLE FOR -40 TO 120 DEGREE C)	16
FSSB - FERRULE SILICONE SEAL BLUE (SILICONE SUITABLE FOR -40 TO 120 DEGREE C)	16
FPTFE - FERRULE PTFE SEALS (PTFE SUITABLE FOR -40 TO 230 DEGREE C)	17
FSBL - FERRULE SEAL BLACK WITH LIP(EPDM SUITABLE FOR -40 TO 120 DEGREE C)	17
FSSBL - FERRULE SILICONE SEAL WITH LIP BLUE (SILICONE SUITABLE FOR -40 TO 120 DEGREE C)	18
FPTFEL - FERRULE SEAL WITH LIP PTFE (PTFE SUITABLE FOR -40 TO 230 DEGREE C)	18
FSD - FERRULE SEAL DISK 316 EPDM (EPDM SUITABLE FOR -40 TO 120 DEGREE C)	18
FSG10 - FERRULE SCREEN GASKET 10 MESH (EPDM SUITABLE FOR -40 TO 120 DEGREE C)	19
FSG20 - FERRULE SCREEN GASKET 20 MESH (EPDM SUITABLE FOR -40 TO 120 DEGREE C)	19
FHDC - FERRULE HEAVY DUTY CLAMPS	19
FHDC H - FERRULE HEAVY DUTY CLAMP	20
FLDC - FERRULE LIGHT DUTY CLAMP	20
FHDCS - FERRULE HEAVY DUTY SWIVEL CLAMP	21
CFUB - COMPLETE EXPANDING FERRULE UNION (2XEFH, 1 X FSB,1XFHDC)	21
CFUS - COMPLETE EXPANDING FERRULE UNION (2XEFH, 1XFSS, 1XFHDC)	22
CFUSB - COMPLETE EXPANDING FERRULE UNION (2XEFH,1XFSSB,1XFHDC)	22
CFUBL - COMPLETE EXPANDING FERRULE UNION (2XEFH,1XFSBL,1XFHDC)	23
CFUSBL - COMPLETE EXPANDING FERRULE UNION (2XEFH,1XFSSBL,1XFHDC)	23
ICFUB - INNOX COMPLETE EXPANDING FERRULE UNION (2 X IEFH,1 X FHDC, 1 X FSB)	24
ICFUS - INNOX COMPLETE EXPANDING FERRULE UNION (2 X IEFH, 1 X FHDC, 1 X FSS)	24
ICFUSB - INNOX COMPLETE EXPANDING FERRULE UNION (2 X IEFH, 1 X FHDC, 1 X FSSB)	25
ICFUSBL -INNOX COMPLETE EXPANDING FERRULE UNION (2 X IEFH, 1 X FHDC, 1 X FSSBL)	25

FBSPM - FERRULE TO BSP MALE	26
FBSPS - FERRULE TO BSP SOCKET	27
FTEC - FERRULE THREADED END CAP	28
FB - FERRULE BLANK	28
FBC - FERRULE BLANK CLEAR	28
FB90 - FERRULE BEND 90 DEGREE BEND	29
FBL90 - FERRULE BEND LONG 90 DEGREE	30
FBOE90 - FERRULE BEND ONE END 90 DEGREE	30
FBR90 - FERRULE BEND REDUCING 90 DEGREE	30
FJB - FERRULE J BEND 90 DEGREE	31
WESB90 - WELD END SHORT BEND 90 DEGREE	31
WELB90 - WELD END LONG BEND 90 DEGREE	31
WESB60 - WELD END SHORT BEND 60 DEGREE	32
WESB30 - WELD END SHORT BEND 30 DEGREE	32
FB45 - FERRULE BEND 45 DEGREE BEND	33
FBL45 - FERRULE BEND LONG 45 DEGREE	33
FBOE45 - FERRULE BEND ONE END 45 DEGREE	34
FB4545 - FERRULE BEND 45 45 DEGREE BACK TO BACK	34
WESB45 - WELD END SHORT BEND 45 DEGREE	34
WELB45 - WELD END LONG BEND 45 DEGREE	35
FB180 - FERRULE BEND 180 DEGREE (STD)	35
FBL180 - FERRULE BEND LONG 180 DEGREE	35
WEB180 - WELD END BEND 180 DEGREE	36
WELB180 - WELD END LONG BEND 180 DEGREE	36
VUBD - VAT UBEND 180 DEGREE WITH RJT NUT AND LINER ONE END AND FERRULE CONNECTION ONE END	37
FB90D - FERRULE BEND 90 DEGREE WITH DRAIN	37
FET - FERRULE EQUAL TEE	37
WEET - WELD END EQUAL TEE	38
WEETL - WELD END EQUAL TEE LONG	39
FST - FERRULE SWEPT TEE	39
WEST - WELD END SWEPT TEE	39
FSTB - FERRULE SWEPT TEE BEND	40
FRST - FERRULE REDUCING SWEPT TEE	40
WESTB - WELD END SWEPT TEE BEND	40
WERT - WELD END REDUCING TEE	41

FSRT(O) - FERRULE SHORT REDUCING TEE (OFFSET)	41
FBT - FERRULE WELD END BRANCH TEE	41
WEEPT - WELD END PULLED TEE	42
WERPT - WEDL END REDUCING PULL TEE	42
FEC - FERRULE EQUAL CROSS	43
WEEC - WELD END EQUAL CROSS	43
WESC - WELD END SHORT CROSS	43
FY - FERRULE Y	44
WEY - WELD END Y PIECE	44
FCR - FERRULE CONCENTRIC REDUCER	44
WECR - WELD END CONCENTRIC REDUCER	45
WECRL - WELD END CONCENTRIC REDUCER LONG	46
FER - FERRULE ECCENTRIC REDUCER	47
WEER - WELD END ECCENTRIC REDUCER	47
FCROE - FERRULE CONCENTRIC REDUCER ONE END	47
FSR - FERRULE SPHERICAL REDUCER	47
FSR - FERRULE TO FERRULE SHORT REDUCER	48
FSG - FERRULE SIGHTGLASS	48
IFAIT - INNOX FERRULED AIR INJECTOR TEE	48
IAF - INNOX AIR FILTER WASHABLE	49
ITF - INNOX TUB FILTER	49
ISSFH - INNOX STAINLESS STEEL FLEXI HOSE WITH FERRULES	49
ISSFHFF - STAINLESS STEEL FLEXI HOSE WITH FEMALE BSP CONNECTIONS	49
FHT - FERRULE HOSE TAIL	50
WEHT - WELD END HOSE TAIL	50
RJTWEHT - RJT LINER TO WELD END HOSE TAIL	51
RJTWEHTC - RJT NUT AND LINER TO WELD END HOSE TAIL	51
IFD - INNOX FERRULE DRAIN	51
IFECD - INNOX FERRULED END CAP DRAIN	51
ICD - INNOX CLAMP DRAIN	52
IHTD90 - INNOX HOSE CLAMP DRAIN RIGHT ANGLE	52
ISSS - SEALS FOR MILK ENTRY AND DRAINS	53
MEN - MILK ENTRY NIPPLE	53
IDNSTF - INNOX DRAIN FITTING WITH NON SWIVEL TUBE FITTING	53
IBMTD - INNOX CLAMP DRAIN	54

IWD - INNOX WELD DRAIN COMPLETE	54
IDTD - INNOX DRAIN TYPE D	54
IBMTC - INNOX BOSS MOUNT CLAMP PLAIN (WITH SOCKET AND PORTS)	54
WEFEC - WELD END FLAT END CAP	55
WEDEC - WELD END DOME END CAP	55
SSEC - WELD END END CAP	56
FAPV - FERRULE AIR PURGE VALVES AND ACCESSORIES	56
FBVM - FERRULE BUTTERFLY VALVE WITH MULTI POSITION HANDLE	57
FBVS - FERRULE BUTTERFLY VALVE WITH SQUEEZE HANDLE	57
FBVSS - FERRULE BUTTERFLY VALVE WITH SQUEEZE STAINLESS STEEL HANDLE	58
FBVTC - FERRULE BUTTERFLY LINKED TEE	58
EABV - ELECTRIC ACTUATED BUTTERFLY VALVES	59
EA3WSB - ELECTRIC ACTUATOR 3 WAY BALL VALVE	59
FBV3W - FERRULE BALL VALVE	59
PF3WBV - PNEUMATIC FERRULED 3 WAY T PORT BALL VALVE	60
WEBV - WELD END BUTTERFLY VALVE	60
WEBVT100 - WELD END BUTTERFLY VALVE WITH 100MM TAILS	60
WEBVT - WELD END BUTTERFLY VALVE WITH SHORT TAILS	61
PFBV - PNEUMATIC FERRULED BUTTERFLY VALVE	61
PAV - PNEUMATIC ANGLE VALVE	62
PSV - PNEUMATIC STRAIGHT VALVE	62
BVSE - BUTTERFLY VALVE EPDM SEAL BLACK	62
BVSS - BUTTERFLY VALVE SILICONE SEAL	63
BVMP - BUTTERFLY VALVE HANDLE MULTI POSITION PULL	63
BVHB - BUTTERFLY VALVE SQUEEZE HANDLE (PLASTIC)	64
BVHSS - BUTTERFLY VALVE HANDLE SQUEEZE (STAINLESS STEEL)	64
BVHSK - BUTTERFLY VALVE HANDLE SCREW KNOB	65
BVSB - BUTTERFLY STEM BUSH	65
FNRV - FERRULE NON RETURN VALVE	66
FNRVD - FERRULE NON RETURN VALVE WITH DRAIN	66
IBNRV -INNOX BALL NON RETURN VALVE	66
IBNRVD - INNOX BALL NON RETURN VALVE WITH DRAIN	66
IINRV - INNOX INTERNAL NON RETURN VALVE	67
NRVDV - VAT NON RETURN VALVE WITH DRAIN	67
NRV - NON RETURN VALVE SPARE PARTS	67

IBNRV - ACCESSORIES	69
VWNRV - VAT WASH CIP NON RETURN VALVE	69
INRVDE - INNOX NON RETURN VALVE DRAIN EXTENTIONS	70
IMFB - INNOX MILK FROTH BUSTER	70
RJTL - RJT LINER	70
RJTLR - RJT REDUCING LINER	71
RJTM - RJT MALE	71
RJTE - RJT EXPANDING LINERS AND MALES	72
RJTSN - RJT SLOTTED NUT	72
RJTB - RJT BLANK	73
RJTS - RJT STEP SEAL EPDM (EPDM SUITABLE FOR -40 TO 120 DEGREE C)	73
RJTNS - RJT NITRILE STEP SEAL (NITRILE SUITABLE FOR -35 TO 120 DEGREE C)	74
RJTOS - RJT ORING TYPE SEAL EPDM (EPDM SUITABLE FOR -40 TO 120 DEGREE C)	74
FRJT - FERRULE TO RJT NUT AND LINER	75
FRJTM - FERRULE TO RJT MALE	75
RJTNLN - RJT NUT AND LINER TO RJT MALE	76
RJTS - RJT SPANNER	76
IFSH - INNOX FLOAT SWITCH HOUSING	76
ILS - INNOX LEVEL SWITCHES	77
IBMT - INNOX 5/8 BOSS MOUNT TUBE (MIRROR FINISH)	77
IBMTM - INNOX 5/8 BOSS MOUNT TUBE (MATT FINISH)	78
IBMTP - INNOX BOSS MOUNT TUBE PLAIN (MIRROR FINISH)	78
IBMTPM - INNOX BOSS MOUNT TUBE PLAIN (MATT FINISH)	79
IBMT - ACCESSORIES	79
IBMWM - INNOX BOSS MOUNT WALL MOUNT	80
ISSSR16 - INNOX STAINLESS STEEL SOLID ROD 5/8" 16MM	80
ISMB - INNOX SLIDE MOUNT BRACKET	80
UPVCWB - UPVC WALL BRACKETS	81
IFWP - INNOX FERRULE WALLL PLATE	81
IRSB - INNOX ROTARY SPRAY BALL CIP	82
ISB - INNOX FERRULED STATIC SPRAY BALL	82
DTPF - DAIRY TUBE PRESS FITTINGS	82
ISWB - INNOX SOCKET WELD	83
DTAF - DAIRY TUBE ADJUSTABLE FOOT	84
FTRANSC - FERRULE TRANSITION CONE	84

RJTTRANS - RJT TRANSITION CONE SEAL	84
IFTA - INNOX FERRULE THERMOWELL ADAPTOR	84
IMPGB - INNOX MILK PUMP GB	85
IMPISA - INNOX MILK PUMP SEAL MK2	85
IVP - INNOX VORTEX PLATE	85
IMCS - INNOX MILK CUP SHELL	86
IHT - INNOX HEADER TANK	86
ISCL - INNOX SNAP CLAMP (ONE SIZE FITS ALL)	86
ISN - INNOX SPRAY NOZZLE	86
IVC - INNOX VACUUM CLAMP	87
IVO - INNOX VAT OUTLET	87
VO - VAT OUTLET FITTINGS	87
AJC - AGITATOR COUPLER	87
ISSTST - INNOX STAINLESS STEEL TEAT SPRAY TANK	88
IVT - INNOX VACUUM INTERCEPTOR TANK	88
IR - INNOX REGULATOR VACUUM 50-3500 L/MIN	88
ISSVE - INNOX STAINLESS STEEL VIBRATION ELEMINATOR	88
IVPFE45 - INNOX VACUUM PUSH FIT 45 DEGREE ELBOW	89
IVPFE90 - INNOX VACUUM PUSH FIT 90 DEGREE ELBOW	89
IVPFET - INNOX VACUUM PUSH FIT EQUAL TEE	89
IVPFR - INNOX VACUUM PUSH FIT STRAIGHT REDUCER	89
IVPFRT - INNOX VACUUM PUSH FIT REDUCING TEE	90
IVPFSC - INNOX VACUUM PUSH FIT STRAIGHT COUPLING	90
SSHN - STAINLESS STEEL HEX NUTS	91
SSSW -STAINLESS STEEL SQUARE WASHER	91
SSTR - STAINLESS STEEL THREADED ROD	91
SSTF - STAINLESS STEEL TANK FITTING 220MM	92
SSTFW - STAINLESS STEEL TANK FITTING WASHER	92
TFS - TANK FITTINGS SEALS	93
SSSTF - STAINLESS STEEL SHORT TANK FITTINGS	93
ISSABM - INNOX STAINLESS STEEL ANCHOR BOLT	93
IVWM - INNOX VAT WASH MANIFOLD (SCHEDULE PIPE)	94
IT - INNOX THERMOMETER	94
WR - WATER RISER	94
BSPE90MF - BSP ELBOW 90 DEGREE MALE FEMALE 316	95

	Page
BSPE90FF - BSP ELBOW 90 DEGREE FEMALE FEMALE 316	95
BSPE45FF - BSP ELBOW 45 DEGREE FEMALE FEMALE 316	96
BSPET - BSP EQUAL TEE	97
BSPS - BSP SOCKET 316	98
BSPMU - BSP MAC UNION 316	98
BSPHN - BSP HEX NIPPLE 316	99
BSPHT - BSP HOSE TAIL 316	100
BSPBNN - BSP BARREL NIPPLE 316	100
BSPBN - BSP BACK NUT 316	101
BSPSQHP - BSP SQUARE HEAD PLUG 316	102
BSPRB - BSP REDUCING BUSH 316	102
BSPRHN - BSP REDUCING HEX NIPPLE 316	104
BSPRS - BSP REDUCING SOCKET 316	105
BSPC - BSP CROSS 316	106
BSPFRT - BSP FULL RUNNING THREAD 316	107
BSPRC - BSP ROUND CAP 316	108
BSPNPTHN - BSP TO NPT HEX NIPPLE 316	108
BSPNPTS - BSP TO NPT SOCKET 316	109
WN - WELD NIPPLE 316	110
WNR - WELD NIPPLE REDUCER TO TUBE	110
WNRS - WELD NIPPLE REDUCER TO TUBE SOCKET	111
ISSVCV - INNOX STAINLESS STEEL VERTICAL CHECK VALVE	112
ISSSCV - INNOX STAINLESS STEEL SWING CHECK VALVE	113
2PBV - 2 PIECE BALL VALVE	113
2PBVSK - 2 PIECE BALL VALVE SEAL KIT	114
MBV - MOTORIZED BALL VALVE	115
3PBV - 3 PIECE BALL VALVE	115
3WBVTP - 3 WAY BALL VALVE T PORT	115
IMBV - INNOX MINI BALL VALVE (BLUE HANDLE)	116
ISSMBV - INNOX STAINLESS STEEL MINI BALL VALVE	116
BVLH - 2 PIECE BALL VALVE LOCKING HANDLE	117
HDHC - HEAVY DUTY HOSE CLAMP	117
SHC - STANDARD HOSE CLAMP SS304	119
IFAG - INNOX FLANGE AND GASKET	119
IITC - INNOX INTERNAL TUBE CLEANER	120

IPP - INNOX PERISTALTIC PUMP (800ML PER MIN)	120
ISSBE - INNOX STAINLESS STEEL BARB ELBOW 90 DEGREE	121
ISSBES - INNOX STAINLESS STEEL EQUAL STRAIGHT	122
ISSBET - INNOX STAINLESS STEEL BARB EQUAL TEE	122
ISSBRS - INNOX STAINLESS STEEL BARB REDUCING STRAIGHT	123
ISSBY - INNOX STAINLESS STEEL BARB Y	123
ISST - INNOX STAINLESS STEEL TUBE (PICK UP OR LOCAL DELIVERY ONLY FROM MORRINSVILLE)	124
IWGRH - INNOX WATER GLAND RIGHT HAND	125
ISJ - INNOX SWIVEL JOINT	126
KQB2R - PNEUMATIC REDUCER	126
PB - BSP MALE THREAD TO TUBE TEE	126
PBAE - BRASS AIR EXHAUST	127
PBAEWA - BRASS AIR EXHAUST WITH SPEED ADJUSTER	127
PBHE - PNEUMATIC BULKHEAD ELBOW	128
PBHS - PNEUMATIC BULKHEAD STRAIGHT FITTING	128
PC - MALE THREAD TO TUBE	128
PCF - FEMALE THREAD TO TUBE	129
PE - PNEUMATIC EQUAL TEE TUBE	129
PEC - PNEUMATIC BRASS PLUG	129
PEG - PNEUMATIC REDUCING TEE TUBE	130
PH - MALE THREAD SWIVEL 90 DEGREE ELBOW TO TUBE	130
PK - PNEUMATIC 5 PORT MANIFOLD	131
PL - PNEUMATIC BSP MALE THREAD 90 DEGREE ELBOW TO TUBE	131
PLNRV - PNEUMATIC NON RETURN VALVE	132
PP - PNEUMATIC PUSH LOCK FITTING BLANK	132
PPC - PNEUMATIC PIN CYLINDER	132
SL - BSP MALE THREAD SWIVEL 90 DEGREE WITH SPEED ADJUSTER TO TUBE	133
PSC - PNEUMATIC RAM AND MOUNTING BRACKETS	133
PU - PNEUMATIC STRAIGHT CONNECTOR	134
PUG - PNEUMATIC STRAIGHT REDUCER	134
PV - PNEUMATIC 90 DEGREE ELBOW	134
PY - PNEUMATIC Y PIECE	134
HVFF - PNEUMATIC SHUT OFF VALVE	135
PPU - PNEUMATIC POLYURETHANE TUBING	135
PE - PNEUMATIC POLYETHYLENE TUBE	135

	Page
AC/AR/AF - PNEUMATIC REGULATORS, WATER FILTERS AND OIL FILTERS	136
IAARPRV-AIR RELEASE PRESSURE RELIEF	136
3V 4V - PNEUMATIC ELECTRIC VALVES	137
3R - PNEUMATIC PUSH PULL SWITCH	137
PVS - PNEUMATIC SOLENOID VALVE COIL	137
GBHWPSV-GB HOT WATER PLASTIC SOLINOID VALVE 15MM 24V DC 100PSI 85 DEGREE C	137
PNRV - PNEUMATIC NON RETURN VALVE	138
NCT - NYLON CABLE TIES	138
SSCT - STAINLESS STEEL CABLE TIES	138
GB SLUGWASH CONTROLLER	139
GB POWER SUPPLIES	140
GBPS - GB POWER SUPPLIES SPARES	140
GBAW - GB AUTO WASHER CONTROLLER PNEUMATIC	142
GBAW - GB AUTO WASHER CONTROLLER PNEUMATIC SPARES	142
GBAWCK50-GB AUTOWASH COMPLETE KIT 50MM JETTER PICKUP AND 50MM DIVERT VALVE	143
GBMR - GB MILK RECOVERY CONTROLLER	144
GBMR12-GB MILK RECOVERY CONTROLLER SPARES	145
GBAWHF - GB AUTO WATER HEATER FILL	146
GBAWHF - GB AUTO WATER HEATER FILL SPARE PARTS	146
GBPE- PLASTIC ENCLOSURE	148
GBSSE - INNOX STAINLESS STEEL ENCLOSURE	148
ZXCIP - INNOX WATERPROOF CONNECTORS	149

EFH - EXPANDING FERRULE HALF (STD)



**EFH32-EXPANDING
FERRULE HALF (STD)32MM
21.5MM LONG**



**EFH38-EXPANDING
FERRULE HALF (STD)38MM
28.5MM LONG**



**EFH50-EXPANDING
FERRULE HALF (STD)50MM
33.5MM LONG**



**EFH63-EXPANDING
FERRULE HALF (STD)63MM
35.5MM LONG**



**EFH76-EXPANDING
FERRULE HALF (STD)76MM
36.5MM LONG**



**EFH101-EXPANDING
FERRULE HALF (STD)101MM
38.5MM LONG**



**EFH152-EXPANDING
FERRULE HALF (STD)152MM
38.5MM LONG**

IEFH - INNOX EXPANDING FERRULE HALF



**IEFH12-INNOX EXPANDING
FERRULE HALF 12MM
10MM LONG**



**IEFH16-INNOX EXPANDING
FERRULE HALF 16MM
10MM LONG**



**IEFH20-INNOX EXPANDING
FERRULE HALF 20MM
18MM LONG**



**IEFH25-INNOX EXPANDING
FERRULE HALF 25MM
18MM LONG**



**IEFH32-INNOX EXPANDING
FERRULE HALF 32MM
14MM LONG**



**IEFH38-INNOX EXPANDING
FERRULE HALF 38MM
14MM LONG**



**IEFH50-INNOX EXPANDING
FERRULE HALF 50MM
14.5MM LONG**



**IEFH63-INNOX EXPANDING
FERRULE HALF 63MM
14.5MM LONG**

IEFH - INNOX EXPANDING FERRULE HALF



**IEFH76-INNOX EXPANDING
FERRULE HALF 76MM
18.5MM LONG**



**IEFH101-INNOX EXPANDING
FERRULE HALF 101MM
18.5MM LONG**

ISEFH - INNOX SHORT EXPANDING FERRULE HALF (6MM LONG)



**ISEFH32-INNOX SHORT
EXPANDING FERRULE HALF
32MM 6MM LONG**



**ISEFH38-INNOX SHORT
EXPANDING FERRULE HALF
38MM 6MM LONG**



**ISEFH50-INNOX SHORT
EXPANDING FERRULE HALF
50MM 6MM LONG**



**ISEFH63-INNOX SHORT
EXPANDING FERRULE HALF
63MM 6MM LONG**



**ISEFH76-INNOX SHORT
EXPANDING FERRULE HALF
76MM 6MM LONG**



**ISEFH101-INNOX SHORT
EXPANDING FERRULE HALF
101MM 6MM LONG**

WEFHS - WELD END FERRULE HALF SHORT



**WEFHS32-WELD END
FERRULE HALF 32MM
SHORT 13MM LONG**



**WEFHS38-WELD END
FERRULE HALF 38MM
SHORT 13MM LONG**



**WEFHS50-WELD END
FERRULE HALF 50MM
SHORT 13MM LONG**



**WEFHS63-WELD END
FERRULE HALF 63MM
SHORT 13MM LONG**

WEFHS - WELD END FERRULE HALF SHORT



**WEFHS76-WELD END
FERRULE HALF 76MM
SHORT 13MM LONG**



**WEFHS101-WELD END
FERRULE HALF 101MM
SHORT 15.5MM LONG**

WEFHL - WELD END FERRULE HALF LONG



**WEFHL32-WELD END
FERRULE LONG HALF 32MM
21.5MM LONG**



**WEFHL38-WELD END
FERRULE LONG HALF 38MM
21.5MM LONG**



**WEFHL50-WELD END
FERRULE LONG HALF 50MM
21.5MM LONG**



**WEFHL63-WELD END
FERRULE LONG HALF 63MM
21.5MM LONG**



**WEFHL76-WELD END
FERRULE LONG HALF 76MM
21.5MM LONG**



**WEFHL101-WELD END
FERRULE LONG HALF
101MM 21.5MM LONG**

RF - REDUCING FERRULE HALF (EXPANDING TYPE)



**RF3820-REDUCING FERRULE
38-20MM**



**RF3825-REDUCING FERRULE
38-25MM**



**RF5020-REDUCING FERRULE
50-20MM**



**RF5025-REDUCING FERRULE
50-25MM**

RF - REDUCING FERRULE HALF (EXPANDING TYPE)



GAEFH - GEA EXPANDING FERRULE HALF



SCD - SCHEDULE TUBE FERRULE HALF EXPANDING TYPE



**SCD2038- SCHEDULE TUBE
20MM TO FERRULE 38MM (EXPANDING TYPE)**



**SCD2538- SCHEDULE TUBE
25MM TO FERRULE 38MM (EXPANDING TYPE)**



**SCD3250- SCHEDULE TUBE
32MM TO FERRULE 50MM (EXPANDING TYPE)**



**SCD3850- SCHEDULE TUBE
38MM TO FERRULE 50MM (EXPANDING TYPE)**



**SCD5063- SCHEDULE TUBE
50MM TO FERRULE 63MM (EXPANDING TYPE)**



**SCD6376- SCHEDULE TUBE
63MM TO FERRULE 76MM (EXPANDING TYPE)**

FSB - FERRULE SEAL BLACK (EPDM SUITABLE FOR -40 TO 120 DEGREE C)



**FSB12-FERRULE SEAL
(EPDM) 12MM**



**FSB16-FERRULE SEAL
(EPDM) 16MM**



**FSB20-FERRULE SEAL
(EPDM) 20MM**



**FSB25-FERRULE SEAL
(EPDM) 25MM**



**FSB32-FERRULE SEAL
(EPDM) 32MM**



**FSB38-FERRULE SEAL
(EPDM) 38MM**



**FSB50-FERRULE SEAL
(EPDM) 50MM**



**FSB63-FERRULE SEAL
(EPDM) 63MM**

FSB - FERRULE SEAL BLACK (EPDM SUITABLE FOR -40 TO 120 DEGREE C)



**FSB76-FERRULE SEAL
(EPDM) 76MM**



**FSB101-FERRULE SEAL
(EPDM) 101MM**



**FSB152-FERRULE SEAL
(EPDM) 152MM**

FSS - FERRULE SILICONE SEAL CLEAR (SILICONE SUITABLE FOR -40 TO 120 DEGREE C)



**FSS32-FERRULE SILICONE
SEALS 32MM**



**FSS38-FERRULE SILICONE
SEALS 38MM**



**FSS50-FERRULE SILICONE
SEALS 50MM**



**FSS63-FERRULE SILICONE
SEALS 63MM**



**FSS76-FERRULE SILICONE
SEALS 76MM**



**FSS101-FERRULE SILICONE
SEALS 101MM**

FSSB - FERRULE SILICONE SEAL BLUE (SILICONE SUITABLE FOR -40 TO 120 DEGREE C)



**FSSB32-FERRULE SILICONE
SEAL BLUE 32MM**



**FSSB38-FERRULE SILICONE
SEAL BLUE 38MM**



**FSSB50-FERRULE SILICONE
SEAL BLUE 50MM**



**FSSB63-FERRULE SILICONE
SEAL BLUE 63MM**

FSSB - FERRULE SILICONE SEAL BLUE (SILICONE SUITABLE FOR -40 TO 120 DEGREE C)



FPTFE - FERRULE PTFE SEALS (PTFE SUITABLE FOR -40 TO 230 DEGREE C)



FSBL - FERRULE SEAL BLACK WITH LIP(EPDM SUITABLE FOR -40 TO 120 DEGREE C)



FSBL - FERRULE SEAL BLACK WITH LIP(EPDM SUITABLE FOR -40 TO 120 DEGREE C)



**FSBL101-FERRULE SEAL
EPDM WITH LIP 101MM**

FSSBL - FERRULE SILICONE SEAL WITH LIP BLUE (SILICONE SUITABLE FOR -40 TO 120 DEGREE C)



**FSSBL32-FERRULE SEAL
WITH LIP SILICONE BLUE
32MM**



**FSSBL38-FERRULE SEAL
WITH LIP SILICONE BLUE
38MM**



**FSSBL50-FERRULE SEAL
WITH LIP SILICONE BLUE
50MM**



**FSSBL63-FERRULE SEAL
WITH LIP SILICONE BLUE
63MM**



**FSSBL76-FERRULE SEAL
WITH LIP SILICONE BLUE
76MM**



**FSSBL101-FERRULE SEAL
WITH LIP SILICONE BLUE
101MM**

FPTFEL - FERRULE SEAL WITH LIP PTFE (PTFE SUITABLE FOR -40 TO 230 DEGREE C)



**FPTFEL101-FERRULE SEAL
WITH LIP PTFE 101MM**



**FPTFEL152-FERRULE SEAL
WITH LIP PTFE 152MM**



**FPTFE202-FERRULE SEAL
WITH LIP PTFE 202MM**

FSD - FERRULE SEAL DISK 316 EPDM (EPDM SUITABLE FOR -40 TO 120 DEGREE C)



**FSD38-FERRULE SEAL DISK
316 EPDM
38MM,32MM,25MM,20M
M**



**FSD50-FERRULE SEAL DISK
316 EPDM 50MM**



**FSD63-FERRULE SEAL DISK
316 EPDM 63MM**

FSG10 - FERRULE SCREEN GASKET 10 MESH (EPDM SUITABLE FOR -40 TO 120 DEGREE C)



**FSG1038-FERRULE SCREEN
GASKET 10 MESH 38MM**



**FSG1050-FERRULE SCREEN
GASKET 10 MESH 50MM**



**FSG1063-FERRULE SCREEN
GASKET 10 MESH 63MM**



**FSG1076-FERRULE SCREEN
GASKET 10 MESH 76MM**



**FSG10101-FERRULE SCREEN
GASKET 10 MESH 101MM**

FSG20 - FERRULE SCREEN GASKET 20 MESH (EPDM SUITABLE FOR -40 TO 120 DEGREE C)



**FSG2038-FERRULE SCREEN
GASKET 20 MESH 38MM**



**FSG2050-FERRULE SCREEN
GASKET 20 MESH 50MM**



**FSG2063-FERRULE SCREEN
GASKET 20 MESH 63MM**

FHDC - FERRULE HEAVY DUTY CLAMPS



**FHDC16 -FERRULE HEAVY
DUTY CLAMP
12.7MM,15.8MM**



**FHDC38-FERRULE HEAVY
DUTY CLAMP
20MM,25MM,32MM,38M
M 160G**



**FHDC50-FERRULE HEAVY
DUTY CLAMP 50MM 185G**



**FHDC63-FERRULE HEAVY
DUTY CLAMP 63MM 230G**



**FHDC76-FERRULE HEAVY
DUTY CLAMP 76MM 265G**



**FHDC101-FERRULE HEAVY
DUTY CLAMP 101MM 380G**



**FHDC152-FERRULE HEAVY
DUTY CLAMP 152MM**



**FHDCN-FERRULE HEAVY
DUTY CLAMP NUT ONLY**

FHDC H - FERRULE HEAVY DUTY CLAMP



**FHDC38H-FERRULE HEAVY
DUTY CLAMP 38MM 220G**



**FHDC50H-FERRULE HEAVY
DUTY CLAMP 50MM 270G**



**FHDC63H-FERRULE HEAVY
DUTY CLAMP 63MM 300G**



**FHDC76H-FERRULE HEAVY
DUTY CLAMP 76MM 340G**



**FHDC101H-FERRULE HEAVY
DUTY CLAMP 101MM 490G**

FLDC - FERRULE LIGHT DUTY CLAMP



**FLDC38-FERRULE LIGHT
DUTY CLAMP 38MM**



**FLDC50-FERRULE LIGHT
DUTY CLAMP 50MM**

FHDC - FERRULE HEAVY DUTY SWIVEL CLAMP



**FHDC38-FERRULE HEAVY
DUTY SWIVEL CLAMP
38MM**



**FHDC50-FERRULE HEAVY
DUTY SWIVEL CLAMP
50MM**



**FHDC63-FERRULE HEAVY
DUTY SWIVEL CLAMP
63MM**



**FHDC76-FERRULE HEAVY
DUTY SWIVEL CLAMP
76MM**



**FHDC101-FERRULE HEAVY
DUTY SWIVEL CLAMP
101MM**

CFUB - COMPLETE EXPANDING FERRULE UNION (2XEFH, 1 X FSB,1XFHDC)



**CFUB32-COMPLETE
EXPANDING FERRULE
UNION 32MM STD**



**CFUB38-COMPLETE
EXPANDING FERRULE
UNION 38MMSTD**



**CFUB50-COMPLETE
EXPANDING FERRULE
UNION 50MM STD**



**CFUB63-COMPLETE
EXPANDING FERRULE
UNION 63MM STD**

CFUB - COMPLETE EXPANDING FERRULE UNION (2XEFH, 1 X FSB,1XFHDC)



**CFUB76-COMplete
EXPANDING FERRULE
UNION 76MM STD**



**CFUB101-COMplete
EXPANDING FERRULE
UNION 101MM STD**

CFUS - COMPLETE EXPANDING FERRULE UNION (2XEFH, 1XFSS, 1XFHDC)



**CFUS32-COMplete
EXPANDING FERRULE
UNION 32MM STD**



**CFUS38-COMplete
EXPANDING FERRULE
UNION 38MM STD**



**CFUS50-COMplete
EXPANDING FERRULE
UNION 50MM STD**



**CFUS63-COMplete
EXPANDING FERRULE
UNION 63MM STD**



**CFUS76-COMplete
EXPANDING FERRULE
UNION 76MM STD**



**CFUS101-COMplete
EXPANDING FERRULE
UNION 101M STD**

CFUSB - COMPLETE EXPANDING FERRULE UNION (2XEFH,1XFSSB,1XFHDC)



**CFUSB32-COMplete
EXPANDING FERRULE
UNION 32MM STD**



**CFUSB38-COMplete
EXPANDING FERRULE
UNION 38MM STD**



**CFUSB50-COMplete
EXPANDING FERRULE
UNION 50MM STD**



**CFUSB63-COMplete
EXPANDING FERRULE
UNION 63MM STD**

CFUSB - COMPLETE EXPANDING FERRULE UNION (2XEFH,1XFSSB,1XFHDC)



CFUBL - COMPLETE EXPANDING FERRULE UNION (2XEFH,1XFSBL,1XFHDC)



CFUSBL - COMPLETE EXPANDING FERRULE UNION (2XEFH,1XFSSBL,1XFHDC)



CFUSBL - COMPLETE EXPANDING FERRULE UNION (2XEFH,1XFSSBL,1XFHDC)



**CFUSBL101-COMPLETE
EXPANDING FERRULE
UNION 101MM STD**

ICFUB - INNOX COMPLETE EXPANDING FERRULE UNION (2 X IEFH,1 X FHDC, 1 X FSB)



**ICFUB32-COMPLETE
EXPANDING FERRULE
INNOX TYPE UNION 32MM**



**ICFUB38-COMPLETE
EXPANDING FERRULE
INNOX TYPE UNION 38MM**



**ICFUB50-COMPLETE
EXPANDING FERRULE
INNOX TYPE UNION 50MM**



**ICFUB63-COMPLETE
EXPANDING FERRULE
INNOX TYPE UNION 63MM**



**ICFUB76-COMPLETE
EXPANDING FERRULE
INNOX TYPE UNION 76MM**



**ICFUB101-COMPLETE
EXPANDING FERRULE
INNOX TYPE UNION 101MM**

ICFUS - INNOX COMPLETE EXPANDING FERRULE UNION (2 X IEFH, 1 X FHDC, 1 X FSS)



**ICFUS32-COMPLETE
EXPANDING FERRULE
INNOX TYPE UNION 32MM**



**ICFUS38-COMPLETE
EXPANDING FERRULE
INNOX TYPE UNION 38MM**



**ICFUS50-COMPLETE
EXPANDING FERRULE
INNOX TYPE UNION 50MM**



**ICFUS63-COMPLETE
EXPANDING FERRULE
INNOX TYPE UNION 63MM**

ICFUS - INNOX COMPLETE EXPANDING FERRULE UNION (2 X IEFH, 1 X FHDC, 1 X FSS)



**ICFUS76-COMPLETE
EXPANDING FERRULE
INNOX TYPE UNION 76MM**



**ICFUS101-COMPLETE
EXPANDING FERRULE
INNOX TYPE UNION 101MM**

ICFUSB - INNOX COMPLETE EXPANDING FERRULE UNION (2 X IEFH, 1 X FHDC, 1 X FSSB)



**ICFUSB32-COMPLETE
EXPANDING FERRULE
INNOX TYPE UNION 32MM**



**ICFUSB38-COMPLETE
EXPANDING FERRULE
INNOX TYPE UNION 38MM**



**ICFUSB50-COMPLETE
EXPANDING FERRULE
INNOX TYPE UNION 50MM**



**ICFUSB63-COMPLETE
EXPANDING FERRULE
INNOX TYPE UNION 63MM**



**ICFUSB76-COMPLETE
EXPANDING FERRULE
INNOX TYPE UNION 76MM**



**ICFUSB101-COMPLETE
EXPANDING FERRULE
INNOX TYPE UNION 101MM**

ICFUSBL - INNOX COMPLETE EXPANDING FERRULE UNION (2 X IEFH, 1 X FHDC, 1 X FSSBL)



**ICFUSBL38-COMPLETE
EXPANDING FERRULE
INNOX TYPE UNION 38MM**



**ICFUSBL50-COMPLETE
EXPANDING FERRULE
INNOX TYPE UNION 50MM**



**ICFUSBL63-COMPLETE
EXPANDING FERRULE
INNOX TYPE UNION 63MM**



**ICFUSBL76-COMPLETE
EXPANDING FERRULE
INNOX TYPE UNION 76MM**

ICFUSBL -INNOX COMPLETE EXPANDING FERRULE UNION (2 X IEFH, 1 X FHDC, 1 X FSSBL)



**ICFUSBL101-COMplete
EXPANDING FERRULE
INNOX TYPE UNION 101MM**

FBSPM - FERRULE TO BSP MALE



**FBSPM3808- 38MM
FERRULE TO BSP 08MM
MALE**



**FBSPM3810- 38MM
FERRULE TO BSP 10MM
MALE**



**FBSPM3815- 38MM
FERRULE TO BSP 15MM
MALE**



**FBSPM3820-38MM
FERRULE TO BSP 20MM
MALE**



**FBSPM3825-38MM
FERRULE TO BSP 25MM
MALE**



**FBSPM3832-38MM
FERRULE TO BSP 32MM
MALE**



**FBSPM3838-38MM
FERRULE TO BSP 38MM
MALE**



**FBSPM5032-50MM
FERRULE TO BSP 32MM
MALE**



**FBSPM5038-50MM
FERRULE TO BSP 38MM
MALE**



**FBSPM5050-50MM
FERRULE TO BSP 50MM
MALE**



**FBSPM63-63MM FERRULE
TO BSP 63MM MALE**



**FBSPM6350-63MM
FERRULE TO BSP 50MM
MALE**

FBSPM - FERRULE TO BSP MALE



**FBSPM76-76MM FERRULE
TO BSP 76MM MALE**



**FBSPM7663-76MM
FERRULE TO BSP 63MM
MALE**



**FBSPM101-101MM
FERRULE TO BSP 101MM
MALE**

FBSPS - FERRULE TO BSP SOCKET



**FBSPS3808-FBSPS3810-FBSP
S3808-38MM FERRULE TO
BSP 08MM SOCKET**



**FBSPS3810-FBSPS3810-38MM
FERRULE TO BSP 10MM
SOCKET**



**FBSPS3815-38MM FERRULE
TO BSP 15MM SOCKET**



**FBSPS3820-38MM FERRULE
TO BSP 20MM SOCKET**



**FBSPS3825-38MM FERRULE
TO BSP 25MM SOCKET**



**FBSPS3832-38MM FERRULE
TO BSP 32MM SOCKET**



**FBSPS3838-38MM FERRULE
TO BSP 38MM SOCKET**



**FBSPS3850-38MM FERRULE
TO BSP 50MM SOCKET**



**FBSPS5032-50MM FERRULE
TO BSP 32MM SOCKET**



**FBSPS5038-50MM FERRULE
TO BSP 38MM SOCKET**



**FBSPS5050-50MM FERRULE
TO BSP 50MM SOCKET**



**FBSPS63-63MM FERRULE
TO BSP 63MM SOCKET**

FBSPS - FERRULE TO BSP SOCKET



**FBSPS6350-63MM FERRULE
TO BSP 50MM SOCKET**



**FBSPS76-76MM FERRULE
TO BSP 76MM SOCKET**



**FBSPS7663-76MM FERRULE
TO BSP 63MM SOCKET**



**FBSPS101-101MM FERRULE
TO BSP 101MM SOCKET**

FTEC - FERRULE THREADED END CAP



**FTEC3810-FERRULE
THREADED END CAP 38MM
FERRULE 10MM BSPT**



**FTEC3815-FERRULE
THREADED END CAP 38MM
FERRULE 15MM BSPT**



**FTEC3820-FERRULE
THREADED END CAP 38MM
FERRULE 20MM BSPT**



**FTEC3825-FERRULE
THREADED END CAP 38MM
FERRULE 25MM BSPT**

FB - FERRULE BLANK



**FB38-FERRULE BLANK SOLID
38MM 32MM 25MM
20MM**



**FB50-FERRULE BLANK SOLID
50MM**



**FB63-FERRULE BLANK SOLID
63MM**



**FB76-FERRULE BLANK SOLID
76MM**



**FB101-FERRULE BLANK
SOLID 101MM**



**FB152-FERRULE BLANK
SOLID 152MM**

FBC - FERRULE BLANK CLEAR



**FBC38-FERRULE BLANK
CLEAR 38MM**



**FBC50-FERRULE BLANK
CLEAR 50MM**



**FBC63-FERRULE BLANK
CLEAR 63MM**



**FBC76-FERRULE BLANK
CLEAR 76MM**



**FBC101-FERRULE BLANK
END CLEAR 101MM**

FB90 - FERRULE BEND 90 DEGREE BEND



**FB9012-FERRULE 90 DEGREE
BEND 12MM**



**FB9016-FERRULE 90 DEGREE
BEND 16MM**



**FB9020-FERRULE 90 DEGREE
BEND 20MM**



**FB9025-FERRULE 90 DEGREE
BEND 25MM**



**FB9032-FERRULE 90 DEGREE
BEND 32MM**



**FB9038-FERRULE 90 DEGREE
BEND 38MM**



**FB9050-FERRULE 90 DEGREE
BEND 50MM**



**FB9063-FERRULE 90 DEGREE
BEND 63MM**

FB90 - FERRULE BEND 90 DEGREE BEND



**FB9076-FERRULE 90 DEGREE
BEND 76MM**



**FB90101-FERRULE 90
DEGREE BEND 101MM**

FBL90 - FERRULE BEND LONG 90 DEGREE



**FBL9038-FERRULE LONG
LEG BEND 90 DEGREE
38MM**



**FBL9050-FERRULE LONG
LEG BEND 90 DEGREE
50MM**



**FBL9063-FERRULE LONG
LEG BEND 90 DEGREE
63MM**



**FBL9076-FERRULE LONG
LEG BEND 90 DEGREE
76MM**



**FBL90101-FERRULE LONG
LEG BEND 90 DEGREE
101MM**

FBOE90 - FERRULE BEND ONE END 90 DEGREE



**FBOE9038-FERRULE BEND
ONE END 38MM**



**FBOE9050-FERRULE BEND
ONE END 50MM**



**FBOE9063-FERRULE BEND
ONE END 63MM**

FBR90 - FERRULE BEND REDUCING 90 DEGREE



**FBR905038-FERRULE BEND
REDUCING 50-38MM**



**FBR906350-FERRULE BEND
REDUCING 63-50MM**



**FBR907663-FERRULE BEND
REDUCING 76-63MM**



**FBR9010176-FERRULE BEND
REDUCING 101-76MM**

FJB - FERRULE J BEND 90 DEGREE

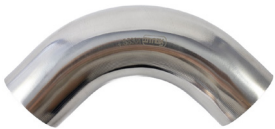


**FJB9038-FERRULE J BEND 90
DEGREE 38MM**



**FJB9050-FERRULE J BEND 90
DEGREE 50MM**

WESB90 - WELD END SHORT BEND 90 DEGREE



**WESB9025-WELD END
SHORT BEND 90 DEGREE
25MM**



**WESB9032-WELD END
SHORT BEND 90 32MM**



**WESB9038-WELD END
SHORT BEND 90 38MM**



**WESB9050-WELD END
SHORT BEND 90 50MM**



**WESB9063-WELD END
SHORT BEND 90 63MM**



**WESB9076-WELD END
SHORT BEND 90 76MM**



**WESB90101-WELD END
SHORT BEND 90 101MM**

WELB90 - WELD END LONG BEND 90 DEGREE



**WELB9012-WELD END
LONG BEND 90 12MM**



**WELB9016-WELD END
LONG BEND 90 16MM**



**WELB9020-WELD END
LONG BEND 90 DEGREE
20MM**



**WELB9025- WELD END
LONG BEND 90 DEGREE
25MM**



**WELB9032-WELD END
LONG BEND 90 DEGREE
32MM**



**WELB9038-WELD END
LONG BEND 90 DEGREE
38MM**



**WELB9050-WELD END
LONG BEND 90 DEGREE
50MM**



**WELB9063-WELD END
LONG BEND 90 DEGREE
63MM**



**WELB9076-WELD END
LONG BEND 90 DEGREE
76MM**



**WELB90101-WELD END
LONG BEND 90 DEGREE
101MM**

WESB60 - WELD END SHORT BEND 60 DEGREE

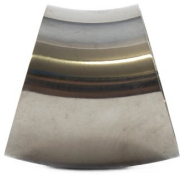


**WESB6038-WELD END
SHORT BEND 60 DEGREE
38MM**

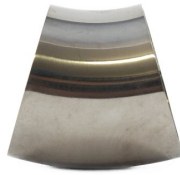


**WESB6050-WELD END
SHORT BEND 60 DEGREE
50MM**

WESB30 - WELD END SHORT BEND 30 DEGREE



**WESB3038-WELD END
SHORT BEND 30 DEGREE
38MM**



**WESB3050-WELD END
SHORT BEND 30 DEGREE
50MM**

FB45 - FERRULE BEND 45 DEGREE BEND



**FB4532-FERRULE 45 DEGREE
BEND 32MM**



**FB4538-FERRULE 45 DEGREE
BEND 38MM**



**FB4550-FERRULE 45 DEGREE
BEND 50MM**



**FB4563-FERRULE 45 DEGREE
BEND 63MM**



**FB4576-FERRULE 45
DEGREE BEND 76MM**



**FB45101-FERRULE 45
DEGREE BEND 101MM**

FBL45 - FERRULE BEND LONG 45 DEGREE



**FBL4532-FERRULE BEND
LONG 45 DEGREE 32MM**



**FBL4538-FERRULE BEND
LONG 45 DEGREE 38MM**



**FBL4550-FERRULE BEND
LONG 45 DEGREE 50MM**



**FBL4563-FERRULE BEND
LONG 45 DEGREE 63MM**

FBL45 - FERRULE BEND LONG 45 DEGREE



**FBL4576-FERRULE BEND
LONG 45 DEGREE 76MM**



**FBL45101-FERRULE BEND
LONG 45 DEGREE 101MM**

FBOE45 - FERRULE BEND ONE END 45 DEGREE



**FBOE4538-FERRULE BEND
ONE END 45 DEGREE 38MM**



**FBOE4550-FERRULE BEND
ONE END 45 DEGREE 50MM**

FB4545 - FERRULE BEND 45 45 DEGREE BACK TO BACK



**FB454538-FERRULE BEND
45 DEGREE 45 DEGREE
38MM**

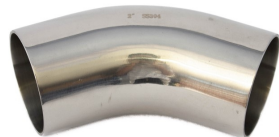


**FB454550-FERRULE BEND
45 DEGREE 45 DEGREE
50MM**

WESB45 - WELD END SHORT BEND 45 DEGREE



**WESB4532-WELD END
SHORT BEND 45 DEGREE
32MM**



**WESB4538-WELD END
SHORT BEND 45 DEGREE
38MM**



**WESB4550-WELD END
SHORT BEND 45 DEGREE
50MM**



**WESB4563-WELD END
SHORT BEND 45 DEGREE
63MM**

WESB45 - WELD END SHORT BEND 45 DEGREE



**WESB4576-WELD END
SHORT BEND 45 DEGREE
76MM**



**WESB45101-WELD END
SHORT BEND 45 DEGREE
101MM**

WELB45 - WELD END LONG BEND 45 DEGREE



**WELB4532-WELD END
LONG BEND 45 DEGREE
32MM**



**WELB4538-WELD END
LONG BEND 45 DEGREE
38MM**



**WELB4550-WELD END
LONG BEND 45 DEGREE
50MM**



**WELB4563-WELD END
LONG BEND 45 DEGREE
63MM**



**WELB4576-WELD END
LONG BEND 45 DEGREE
76MM**



**WELB45101-WELD END
LONG BEND 45 DEGREE
101MM**

FB180 - FERRULE BEND 180 DEGREE (STD)



**FB18038-FERRULE BEND
180 38MM**



**FB18050-FERRULE BEND
180 50MM**

FBL180 - FERRULE BEND LONG 180 DEGREE



**FBL18012-FERRULE LONG
BEND 180 12MM**



**FBL18016-FERRULE BEND
LONG 180 16MM**



**FBL18019-FERRULE BEND
LONG 180 19MM**



**FBL18038-FERRULE BEND
LONG 180 38MM**



**FBL18050-FERRULE BEND
LONG 180 50MM**

WEB180 - WELD END BEND 180 DEGREE



**WEB18038-WELD END
BEND 180 38MM**



**WEB18050-WELD END
BEND 180 50MM**

WELB180 - WELD END LONG BEND 180 DEGREE



**WELB18032-WELD END
LONG BEND 180 32MM**



**WELB18038-WELD END
LONG BEND 180 38MM**



**WELB18050-WELD END
LONG BEND 180 50MM**



**WELB18063-WELD END
LONG BEND 180 63MM**

WELB180 - WELD END LONG BEND 180 DEGREE



**WELB18076-WELD END
LONG BEND 180 76MM**



**WELB180101-WELD END
LONG BEND 180 101MM**

VUBD - VAT UBEND 180 DEGREE WITH RJT NUT AND LINER ONE END AND FERRULE CONNECTION ONE END



**VUBD38-VAT UBEND 180
WITH 19MM DRAIN 38MM**



**VUBD50-VAT UBEND 180
WITH 19MM DRAIN 50MM**



**VUB50-V UBEND 180 RJT
NUT AND LINER TO
FERRULE 50MM**

FB90D - FERRULE BEND 90 DEGREE WITH DRAIN



**FB90DD38-FERRULE BEND
90 DEGREE 38MM WITH
19MM DRAIN**



**FB90DD50-FERRULE BEND
90 DEGREE 50MM WITH
19MM DRAIN**



**FB90DM50-FERRULE BEND
90 DEGREE 50MM WITH
19MM DRAIN**



**FB90DT38-FERRULE BEND
90 DEGREE 38MM WITH
19MM DRAIN**



**FB90DT50-FERRULE BEND
90 DEGREE 50MM WITH
19MM DRAIN**



**FBR90DT5038-FERRULE
BEND REDUCING WITH
DRAIN 50-38MM**

FET - FERRULE EQUAL TEE



**FET12-FERRULE EQUAL TEE
12MM**



**FET16-FERRULE EQUAL TEE
16MM**



**FET19-FERRULE EQUAL TEE
19MM**



**FET32-FERRULE EQUAL TEE
32MM**



**FET38-FERRULE EQUAL TEE
38MM**



**FET50-FERRULE EQUAL TEE
50MM**



**FET63-FERRULE EQUAL TEE
63MM**



**FET76-FERRULE EQUAL TEE
76MM**



**FET101-FERRULE EQUAL TEE
101MM**

WEET - WELD END EQUAL TEE



**WEET12-WELD END EQUAL
TEE 12MM**



**WEET16-WELD END EQUAL
TEE 16MM**



**WEET20-WELD END EQUAL
TEE 20MM**



**WEET25-WELD END EQUAL
TEE 25MM**

WEET - WELD END EQUAL TEE



**WEET32-WELD END EQUAL
TEE 32MM**



**WEET38-WELD END EQUAL
TEE 38MM**



**WEET50-WELD END EQUAL
TEE 50MM**



**WEET63-WELD END EQUAL
TEE 63MM**



**WEET76-WELD END EQUAL
TEE 76MM**



**WEET101-WELD END EQUAL
TEE 101MM**

WEETL - WELD END EQUAL TEE LONG



**WEETL63-WELD END EQUAL
TEE LONG 63MM**



**WEETL76-WELD END EQUAL
TEE LONG 76MM**



**WEETL101-WELD END
EQUAL TEE LONG 101MM**

FST - FERRULE SWEPT TEE



**FST38-FERRULE SWEPT TEE
38MM**



**FST50-FERRULE SWEPT TEE
50MM**



**FST63-FERRULE SWEPT TEE
63MM**

WEST - WELD END SWEPT TEE



**WEST38-WELD END SWEPT
TEE 38MM**



**WEST50-WELD END SWEPT
TEE 50MM**



**WEST63-WELD END SWEPT
TEE 63MM**



**WEST76-WELD END SWEPT
TEE 76MM**



**WEST101-WELD END SWEPT
TEE 101MM**

FSTB - FERRULE SWEPT TEE BEND



**FSTB50-FERRULE SWEPT TEE
BEND 50MM**

FRST - FERRULE REDUCING SWEPT TEE



**FRST506350-FERRULE
REDUCING SWEPT TEE
50-63-50MM**

WESTB - WELD END SWEPT TEE BEND



**WESTB38-WELD END
SWEPT TEE BEND 38MM**



**WESTB50-WELD END
SWEPT TEE BEND 50MM**



**WESTB63-WELD END
SWEPT TEE BEND 63MM**

WERT - WELD END REDUCING TEE



**WERT501950- WELD END
REDUCING TEE 50MM
19MM 50MM**



**WERT503250-WELD END
REDUCING TEE 50MM
32MM 50MM**



**WERT503850-WELD END
REDUCING TEE 50MM
38MM 50MM**



**WERT635063-WELD END
REDUCING TEE 63MM
50MM 63MM**



**WERT766376-WELD END
REDUCING TEE 76MM
63MM 76MM**



**WERT10176101-WELD END
REDUCING PULL TEE
101MM 76MM 101MM**

FSRT(O) - FERRULE SHORT REDUCING TEE (OFFSET)



**FSRT503850-FERRULE
SHORT REDUCING TEE
50MM 38MM 50MM**



**FSRT038- FERRULE SHORT
EQUAL TEE 38MM**



**FSRTO503850-FERRULE
SHORT REDUCING TEE
OFFSET 503850 MM**



**FSET505050-FERRULE
SHORT EQUAL TEE 50MM
50MM 50MM**

FBT - FERRULE WELD END BRANCH TEE



**FBT38-FERRULE BRANCH
TEE 38MM**



**FBT50-FERRULE BRANCH
TEE 50MM**



**FBT63-FERRULE BRANCH
TEE 63MM**



**FBT503850-FERRULE
BRANCH TEE 50/38/50MM**

WEPT - WELD END PULLED TEE



**WEPT32-WELD END EQUAL
PULLED TEE 32MM**



**WEPT38-WELD END EQUAL
PULLED TEE 38MM**



**WEPT50-WELD END EQUAL
PULLED TEE 50MM**



**WEPT63-WELD END EQUAL
PULLED TEE 63MM**

WERPT - WELD END REDUCING PULL TEE



**WERPT383238-WELD END
REDUCING PULL TEE 38MM
32MM 38MM**



**WERPT503250- WELD END
REDUCING PULL TEE 50MM
32MM 50MM**



**WERPT503850-WELD END
REDUCING PULL TEE 50MM
38MM 50MM**



**WERPT633263-WELD END
REDUCING PULL TEE 63MM
32MM 63MM**



**WERPT633863-WELD END
REDUCING PULL TEE 63MM
38MM 63MM**



**WERPT635063- WELD END
REDUCING PULL TEE 63MM
50MM 63MM**



**WERPT763876-WELD END
REDUCING PULL TEE 76MM
38MM 76MM**



**WERPT765076-WELD END
REDUCING PULL TEE 76MM
50MM 76MM**

WERPT - WEDL END REDUCING PULL TEE



**WERPT766376-WELD END
REDUCING PULL TEE 76MM
63MM 76MM**



**WERPT10138101-WELD
END REDUCING PULL TEE
101MM 38MM 101MM**



**WERT10150101-WELD END
REDUCING PULL TEE
101MM 50MM 101MM**



**WERPT10163101-WELD
END REDUCING PULL TEE
101MM 63MM 101MM**



**WERPT10176101-WELB END
REDUCING PULL TEE
101MM 76MM 101MM**

FEC - FERRULE EQUAL CROSS



**FEC38-FERRULE EQUAL
CROSS 38MM**



**FEC50-FERRULE EQUAL
CROSS 50MM**



**FEC63-FERRULE EQUAL
CROSS 63MM**

WEEC - WELD END EQUAL CROSS



**WEEC38-WELD END EQUAL
CROSS 38MM**



**WEEC50-WELD END EQUAL
CROSS 50MM**



**WEEC63-WELD END EQUAL
CROSS 63MM**

WESC - WELD END SHORT CROSS



**WESC38-WELD END SHORT
CROSS 38MM**



**WESC50-WELD END SHORT
CROSS 50MM**



**WESC63-WELD END SHORT
CROSS 63MM**

FY - FERRULE Y



FY38-FERRULE Y 38MM



FY50-FERRULE Y 50MM



FY63-FERRULE Y 63MM

WEY - WELD END Y PIECE



**WEY32-WELD END Y PIECE
32MM**



**WEY38-WELD END Y PIECE
38MM**

FCR - FERRULE CONCENTRIC REDUCER



**FCR5038-FERRULE
CONCENTRIC REDUCER
50-38MM**



**FCRS5038-FERRULE
CONCENTRIC REDUCER
50/38MM SHORT**



**FCR6338-FERRULE
CONCENTRIC REDUCER
63-38MM**



**FCR6350-FERRULE
CONCENTRIC REDUCER
63-50MM**

FCR - FERRULE CONCENTRIC REDUCER



**FCR7638-FERRULE
CONCENTRIC REDUCER
76-38MM**



**FCR7650-FERRULE
CONCENTRIC REDUCER
76-50MM**



**FCR7663-FERRULE
CONCENTRIC REDUCER
76/63MM**



**FCR10150-FERRULE
CONCENTRIC REDUCER
100-50MM**



**FCR10176-FERRULE
CONCENTRIC REDUCER
101-76MM**

WECR - WELD END CONCENTRIC REDUCER



**WECR3225-WELD END
CONCENTRIC REDUCER
32-25MM**



**WECR3820-WELD END
CONCENTRIC REDUCER
38-20MM**



**WECR3825-WELD END
CONCENTRIC REDUCER
38-25MM**



**WECR3832-WELD END
CONCENTRIC REDUCER
38-32MM**



**WECR5020-WELD END
CONCENTRIC REDUCER
50-20MM**



**WECR5032-WELD END
CONCENTRIC REDUCER
50-32MM**



**WECR5038-WELD END
CONCENTRIC REDUCER
50-38MM**



**WECR6332-WELD END
CONCENTRIC REDUCER
63-32MM**

WECR - WELD END CONCENTRIC REDUCER



**WECR6338-WELD END
CONCENTRIC REDUCER
63-38MM**



**WECR6350-WELD END
CONCENTRIC REDUCER
63-50MM**



**WECR7638-WELD END
CONCENTRIC REDUCER
76-38MM**



**WECR7650-WELD END
CONCENTRIC REDUCER
76-50MM**



**WECR7663-WELD END
CONCENTRIC REDUCER
76-63MM**



**WECR10138-WELD END
CONCENTRIC REDUCER
101-38MM**



**WECR10150-WELD END
CONCENTRIC REDUCER
101-50MM**



**WECR10163-WELD END
CONCENTRIC REDUCER
101-63MM**



**WECR10176-WELD END
CONCENTRIC REDUCER
101-76MM**

WECRL - WELD END CONCENTRIC REDUCER LONG



**WECRSL3825-WELD END
CONCENTRIC REDUCER
LONG 38-25MM 70MM**



**WECRL3225-WELD END
CONCENTRIC REDUCER
LONG 32-25MM 70MM
LONG**



**WECRL3832-WELD END
CONCENTRIC REDUCER
LONG 38-32MM 140MM**



**WECRSL3832-WELD END
CONCENTRIC REDUCER
LONG 70MM**

WECRL - WELD END CONCENTRIC REDUCER LONG



**WECRL5038-WELD END
CONCENTRIC REDUCER
LONG 50-38MM**



**WECRL6350-WELD END
CONCENTRIC REDUCER
LONG 63-50MM**

FER - FERRULE ECCENTRIC REDUCER



**FER5038-FERRULE
ECCENTRIC REDUCER
50-38MM**



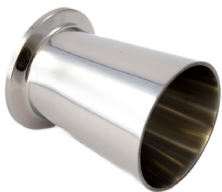
**FER6350-FERRULE
ECCENTRIC REDUCER
63-50MM**

WEER - WELD END ECCENTRIC REDUCER

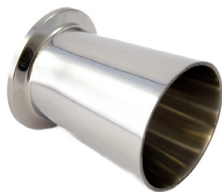


**WEER3832-WELD END
ECCENTRIC REDUCER 38MM
TO 32MM**

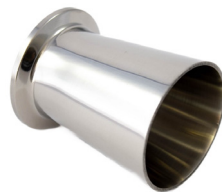
FCROE - FERRULE CONCENTRIC REDUCER ONE END



**FCROE5038-FERRULE
CONCENTRIC REDUCER
50MM TUBE TO 38MM
FERRULE**



**FCROE6350-FERRULE
CONCENTRIC REDUCER
63MM TUBE TO 50MM
FERRULE**



**FCROE152101-FERRULE
CONCENTRIC REDUCER
FERRULED ONE END
152MM TO 101MM**

FSR - FERRULE SPHERICAL REDUCER



**FSR7638-FERRULE
SPHERICAL REDUCER
76-38MM**



**FSR7650-FERRULE
SPHERICAL REDUCER
76-50MM**



**FSR10150-FERRULE
SPHERICAL REDUCER
101-50MM**

FSR - FERRULE TO FERRULE SHORT REDUCER



**FSR5038-FERRULE SHORT
REDUCER 50-38MM**



**FSR6350-FERRULE SHORT
REDUCER 63-50MM**



**FSR7663-FERRULE SHORT
REDUCER 76-63MM**



**FSR10176-FERRULE SHORT
REDUCER 101-76MM**

FSG - FERRULE SIGHTGLASS



**FSG38-FERRULE
SIGHTGLASS 38MM**



**FSG50-FERRULE
SIGHTGLASS 50MM**



**FSG63-FERRULE
SIGHTGLASS 63MM**



**FSG76-FERRULE
SIGHTGLASS 76MM**



**FSG101-FERRULE
SIGHTGLASS 101MM**

IFAIT - INNOX FERRULED AIR INJECTOR TEE



IFAIT50-INNOX FERRULE AIR INJECTOR TEE

IAF - INNOX AIR FILTER WASHABLE



IAF50-INNOX AIR FILTER STAINLESS STEEL 50MM

ITF - INNOX TUB FILTER



ITF38-INNOX TUB FILTER 38MM



ITF50-INNOX TUB FILTER 50MM

ISSFH - INNOX STAINLESS STEEL FLEXI HOSE WITH FERRULES



ISSFH385-INNOX SS FLEXIBLE TUBE 38MM 500MM LONG



ISSFH381-INNOX SS FLEXIBLE TUBE 38MM 1M LONG



ISSFH505- INNOX SS FLEXIBLE TUBE 50MM 500MM LONG



ISSFH501-INNOX SS FLEXIBLE TUBE 50MM 1M LONG

ISSFHFF - STAINLESS STEEL FLEXI HOSE WITH FEMALE BSP CONNECTIONS



**ISSFHFF15-INNOX
STAINLESS STEEL FLEXIABLE
HOSE WITH BSP NUTS
15MM 800MM LONG**



**ISSFHFF20-INNOX
STAINLESS STEEL FLEXIABLE
HOSE WITH BSP NUTS
20MM 800MM LONG**



**ISSFHFF25-INNOX
STAINLESS STEEL FLEXIABLE
HOSE WITH BSP NUTS
25MM 800MM LONG**



**ISSFHFF32-INNOX
STAINLESS STEEL FLEXIABLE
HOSE WITH BSP NUTS
32MM 800MM LONG**



**ISSFHFF40-INNOX
STAINLESS STEEL FLEXIABLE
HOSE WITH BSP NUTS
40MM 800MM LONG**



**ISSFHFF50-INNOX
STAINLESS STEEL FLEXIABLE
HOSE WITH BSP NUTS
50MM 800MM LONG**

FHT - FERRULE HOSE TAIL



**FHT32-FERRULE HOSE TAIL
32MM**



**FHT38-FERRULE HOSE TAIL
38MM**



**FHT50-FERRULE HOSE TAIL
50MM**



**FHT63-FERRULE HOSE TAIL
63MM**



**FHT76-FERRULE HOSE TAIL
76MM**



**FHT101-FERRULE HOSE TAIL
101MM**

WEHT - WELD END HOSE TAIL



**WEHT32-WELD END HOSE
TAIL 32MM**



**WEHT38-WELD END HOSE
TAIL 38MM**



**WEHT50-WELD END HOSE
TAIL 50MM**



**WEHT63-WELD END HOSE
TAIL 63MM**

RJTWEHT - RJT LINER TO WELD END HOSE TAIL



**RJTLWEHT5038- RJT LINER
50MM TO WELD RND HOSE
TAIL 38MM**



**RJTLWEHT5050- RJT LINER
50MM TO WELD END HOSE
TAIL 50 MM**



**RJTWEHT6338- RJT LINER
63MM TO WELD END HOSE
TAIL 38MM**



**RJTLWEHT6350- RJT LINER
63MM TO WELD END HOSE
TAIL 50 MM**

RJTWEHTC - RJT NUT AND LINER TO WELD END HOSE TAIL



**RJTWEHTC5038- RJT50 NUT
AND LINER TO 38MM WELD
END HOSE TAIL**



**RJTWEHTC5050- RJT50 NUT
AND LINER TO 50MM WELD
END HOSE TAIL**



**RJTWEHTC6338- RJT63 NUT
AND LINER TO 38MM WELD
END HOSE TAIL**



**RJTWEHTC6350- RJT63 NUT
AND LINER TO 50MM WELD
END HOSE TAIL**

IFD - INNOX FERRULE DRAIN



**IFD3838- INNOX FERRULE
DRAIN 38MM**



**IFD5038- INNOX FERRULE
DRAIN 50/38MM**



**IFD5050- INNOX FERRULE
DRAIN 50MM-50MM**

IFECD - INNOX FERRULED END CAP DRAIN



**IFECD3819-INNOX FERRULE
END CAP DRAIN 38MM
19MM**



**IFECD5019-INNOX FERRULE
END CAP DRAIN 50MM
19MM**



**IFECD6319-INNOX FERRULE
END CAP DRAIN 63MM
19MM**



**IFECD7619-INNOX FERRULE
END CAP DRAIN 76MM
19MM**



**IFECD10119-INNOX
FERRULE END CAP DRAIN
101MM 19MM**

ICD - INNOX CLAMP DRAIN



**ICD3819-INNOX CLAMP
DRAIN 19MM 38MM**



**ICD5019-INNOX CLAMP
DRAIN 19MM 50MM**



**ICD6319-INNOX CLAMP
DRAIN 19MM 63MM**



**ICD4538-INNOX CLAMP
DRAIN 45 DEGREE 38MM**



**ICD4550-INNOX DRAIN 45
DEGREE 50MM**



**ICD4563-INNOX CLAMP
DRAIN 45 DEGREE 63MM**

IHTD90 - INNOX HOSE CLAMP DRAIN RIGHT ANGLE



IHTD9038- INNOX HOSE CLAMP DRAIN RIGHT ANGLE 19MM 38MM



IHTD9050- INNOX HOSE CLAMP DRAIN RIGHT ANGLE 19MM 50MM



IHTD9063- INNOX HOSE CLAMP DRAIN RIGHT ANGLE 19MM 63MM

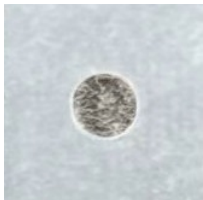


IHTD9076- INNOX HOSE CLAMP DRAIN RIGHT ANGLE 19MM 76MM

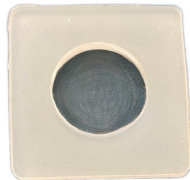


IHTD90101- INNOX HOSE CLAMP DRAIN RIGHT ANGLE 19MM 101MM

ISSS - SEALS FOR MILK ENTRY AND DRAINS



ISSSS-INNOX SQUARE SILICONE SEAL SMALL 30X30X11MM



ISSSL-INNOX SQUARE SILICONE SEAL LARGE 30X30X17MM



ICDSB19-ICD SEAL BLACK 19MM

MEN - MILK ENTRY NIPPLE



MEN1801938-MILK ENTRY NIPPLE 180 DEGREE 19MM MILK ENTRY 38MM TUBE



MEN3819-MILK ENTRY NIPPLE 38MM FERRULE TO 19MM



MENT3819-MILK ENTRY NIPPLE WITH BRACKET 38MM FERRULE TO 19MM

IDNSTF - INNOX DRAIN FITTING WITH NON SWIVEL TUBE FITTING



IDNSTF10-INNOX DRAIN FITTING WITH NON SWIVEL TUBE FITTING

IBMTD - INNOX CLAMP DRAIN



IBMTD38-INNOX CLAMP DRAIN 38MM



IBMTD50-INNOX CLAMP DRAIN 50MM



IBMTD63-INNOX CLAMP DRAIN 63MM



IBMTD76-INNOX CLAMP DRAIN 76MM

IWD - INNOX WELD DRAIN COMPLETE



IWD-INNOX WELD DRAIN

IDTD - INNOX DRAIN TYPE D



IDTD16-INNOX DT DRAIN



IDTDC16-INNOX STAINLESS STEEL DRAIN DL TYPE



IDTDS16-INNOX DRAIN TYPE D 16MM STEM ONLY



INNOX DLAD FERRULE

IBMTC - INNOX BOSS MOUNT CLAMP PLAIN (WITH SOCKET AND PORTS)



**IBMT1550-INNOX CALMP
WITH 15MM SOCKET 50MM**

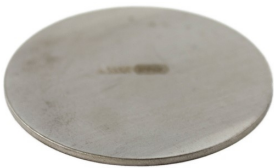


**IBMTC1638-INNOX BOSS
MOUNT TUBE 16MM PORT
38MM**



**IBMTC1650-INNOX BOSS
MOUNT TUBE PLAIN WITH
16MM PORT 50MM**

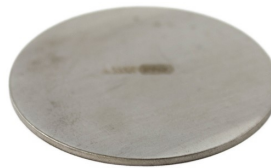
WEFEC - WELD END FLAT END CAP



**WEFEC25-WELD END FLAT
END CAP 25MM**



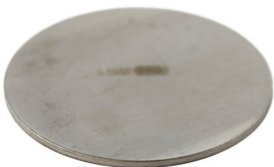
**WEFEC38-WELD END FLAT
END CAP 38MM**



**WEFEC50-WELD END FLAT
END CAP 50MM**



**WEFEC63-WELD END FLAT
END CAP 63MM**

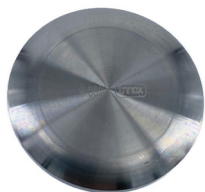


**WEFEC76-WELD END FLAT
END CAP 76MM**

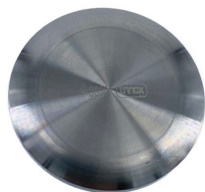


**WEFEC101-WELD END FLAT
END CAP 101MM**

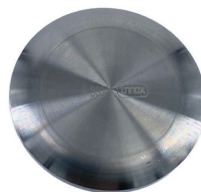
WEDEC - WELD END DOME END CAP



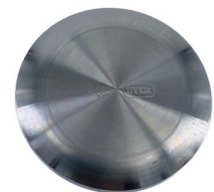
**WEDEC15-WELD END DOME
END CAP 15MM**



**WEDEC20-WELD END DOME
END CAP 20MM**

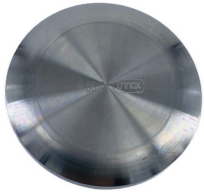


**WEDEC25-WELD END DOME
END CAP 25MM**

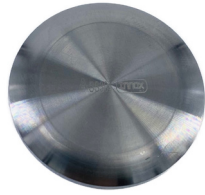


**WEDEC38-WELD END DOME
END CAP 38MM**

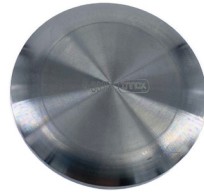
WEDEC - WELD END DOME END CAP



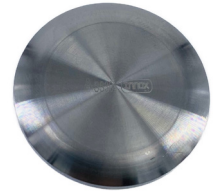
**WEDEC50-WELD END DOME
END CAP 50MM**



**WEDEC63-WELD END DOME
END CAP 63MM**



**WEDEC76-WELD END DOME
END CAP 76MM**



**WEDEC101-WELD END
DOME END CAP 101MM**

SSEC - WELD END END CAP



**SSEC38-WELD END END CAP
38MM**



**SSEC50-WELD END END CAP
50MM**



**SSEC63-WELD END END CAP
63MM**



**SSEC76-WELD END END CAP
76MM**



**SSEC101-WELD END
CAP 101MM**

FAPV - FERRULE AIR PURGE VALVES AND ACCESSORIES



**FAPV38-FERRULE AIR
PURGE VALVE 38MM**



**FAPV50-FERRULE AIR
PURGE VALVE 50MM**



**FAPV38SK- FERRULE AIR
PURGE VALVE SERVICE KIT
38MM**



**FAPV50SK- FERRULE AIR
PURGE VALVE SERVICE KIT
50MM**

FAPV - FERRULE AIR PURGE VALVES AND ACCESSORIES



**FAPVC38-FERRULE AIR
PURGE QUICK CLAMP FOR
38MM TUBE**



**FAPVC50-FERRULE AIR
PURGE QUICK CLAMP FOR
50MM TUBE**



**PQRC08-PNEUMATIC QUICK
RELEASE CONNECTOR WITH
BSP FEMALE 08MM**



**PQRCM08-PNEUMATIC
QUICK COUPLE MALE PART
08 MM BSP**



**PQRCF08- PNEUMATIC
QUICK CONNECTOR BSP
FEMALE 08MM**

FBVM - FERRULE BUTTERFLY VALVE WITH MULTI POSITION HANDLE



**FBVM38-FERRULE
BUTTERFLY VALVE WITH
MULTI POSITION HANDLE**



**FBVM50-FERRULE
BUTTERFLY VALVE WITH
MULTI POSITION HANDLE**



**FBVM63-FERRULE
BUTTERFLY VALVE WITH
MULTI POSITION HANDLE**



**FBVM76-FERRULE
BUTTERFLY VALVE WITH
MULTI POSITION HANDLE**



**FBVM101-FERRULE
BUTTERFLY VALVE WITH
MULTI POSITION HANDLE**

FBVS - FERRULE BUTTERFLY VALVE WITH SQUEEZE HANDLE



**FBVS38-FERRULE
BUTTERFLY VALVE WITH
SQUEEZE HANDLE**



**FBVS50-FERRULE
BUTTERFLY VALVE WITH
SQUEEZE HANDLE**



**FBVS63-FERRULE
BUTTERFLY VALVE WITH
SQUEEZE HANDLE**



**FBVS76-FERRULE
BUTTERFLY VALVE WITH
SQUEEZE HANDLE**



**FBVS101-FERRULE
BUTTERFLY VALVE WITH
SQUEEZE HANDLE**

FBVSS - FERRULE BUTTERFLY VALVE WITH SQUEEZE STAINLESS STEEL HANDLE



**FBVSS38-FERRULE
BUTTERFLY VALVE WITH SS
SQUEEZE HANDLE 38MM**



**FBVSS50-FERRULE
BUTTERFLY VALVE WITH SS
SQUEEZE HANDLE 50MM**



**FBVSS63-FERRULE
BUTTERFLY VALVE WITH SS
SQUEEZE HANDLE 63MM**



**FBVSS76-FERRULE
BUTTERFLY VALVE WITH SS
SQUEEZE HANDLE 76MM**

FBVTC - FERRULE BUTTERFLY LINKED TEE



**FBVTC38-FERRULE
BUTTERFLY VALVE TEE
NO/NC CHANGEABLE
38MM**



**FBVTC50-FERRULE
BUTTERFLY VALVE TEE
NO/NC CHANGEABLE
50MM**



FBVTLC-BUTTERFLY LINK



**FBVTLCC-FERRULE
BUTTERFLY VALVE LINK
CIRCLIP**

FBVTC - FERRULE BUTTERFLY LINKED TEE



**FBVTLP-FERRULE
BUTTERFLY VALVE LINK PIN**



**FBVTLU-FERULE BUTTERFLY
VALVE LINK U PIECE**

EABV - ELECTRIC ACTUATED BUTTERFLY VALVES



**EABV38-ELECTRIC
ACTUATOR BUTTERFLY
VALVE 38MM 24 V DC**



**EABV3812-ELECTRIC
ACTUATOR BUTTERFLY
VALVE 38MM 12V DC**



**EABV50-ELECTRIC
ACTUATOR BUTTERFLY
VALVE 50MM 24V DC**



**EABV63-ELECTRIC
ACTUATED BUTTERFLY
VALVE 63MM 24V DC**



**EABV76-ELECTRIC
ACTUATED BUTTERFLY
VALVE 76MM 24V DC**



**EABV101-ELECTRIC
ACTUATOR BUTTERFLY
VALVE 101MM 24V DC**



**EA50-ELECTRIC ACTUATOR
FOR 38,50,63 MM
BUTTERFLY VALVE**



**EA10176-ELECTRIC
ACUATOR FOR 101,76MM
BUTTERFLY VALVE**

EA3WSB - ELECTRIC ACTUATOR 3 WAY BALL VALVE



**EA3WSBV50-ELECTRIC
ACTUATED 3 WAY BALL
VALVE 50MM 24V DC**



**EAW3SBV5012-ELECTRIC
ACTUATED 3 WAY BALL
VALVE 50MM 12V DC**

FBV3W - FERRULE BALL VALVE



FBV3W38-FERRULE BALL VALVE 3 WAY 38MM



FBV3W50-FERRULE BALL VALVE 3 WAY 50MM



FBV3WPIN- Pins for the handle use on FBV3W50 & 38m 6M Thread



IVEV50- INNOX VAT ENTRY VALVE 50MM STRAIGHT PORTS 50 MM MIDDLE PORT MALE RJT

PF3WBV - PNEUMATIC FERRULED 3 WAY T PORT BALL VALVE



PF3WBV50-PNEUMATIC FERRULE 3 WAY T PORT BALL VALVE 50MM



PF3WBV50A-PNEUMATIC FERRULE 3 WAY T PORT BALL VALVE 50MM AIR ON/OFF

WEBV - WELD END BUTTERFLY VALVE



WEBV25-WELD END BUTTERFLY VALVE 25MM



WEBV32-WELD END BUTTERFLY VALVE 32MM



WEBV38-WELD END BUTTERFLY VALVES 38MM



WEBV50-WELD END BUTTERFLY VALVES 50MM



WEBV63-WELD END BUTTERFLY VALVES 63MM



WEBV76-WELD END BUTTERFLY VALVES 76MM

WEBVT100 - WELD END BUTTERFLY VALVE WITH 100MM TAILS



WEBVT10038-WELD END BUTTERFLY VALVE WITH 100MM TAILS 38MM



WEBVT10050-WELD END BUTTERFLY VALVE WITH 100MM TAILS 50MM

WEBVT - WELD END BUTTERFLY VALVE WITH SHORT TAILS



WEBVT38-WELD END BUTTERFLY VALVE WITH TAILS 38MM



WEBVT50-WELD END BUTTERFLY VALVE WITH TAILS 50MM



WEBVT63-WELD END BUTTERFLY VALVE WITH TAILS 63MM



WEBVT76-WELD END BUTTERFLY VALVE WITH TAILS 76MM



WEBVT101-WELD END BUTTERFLY VALVE WITH TAILS 101MM

PFBV - PNEUMATIC FERRULED BUTTERFLY VALVE



PFBV38-PNEUMATIC FERRULE BUTTERFLY VALVE 38MM



PFBV50-PNEUMATIC FERRULE BUTTERFLY VALVE 50MM



PFBV63-PNEUMATIC FERRULE BUTTERFLY VALVE 63MM



PFBV76-PNEUMATIC FERRULE BUTTERFLY VALVE 76MM

PFBV - PNEUMATIC FERRULED BUTTERFLY VALVE



**PFBV101-PNEUMATIC
FERRULE BUTTERFLY VALVE
101MM**

PAV - PNEUMATIC ANGLE VALVE



**PAV15-PNEUMATIC ANGLE
VALVE 15MM**



**PAV25-PNEUMATIC ANGLE
VALVE 25MM**



**PAV32-PNEUMATIC ANGLE
VALVE 32MM**



**PAV38-PNEUMATIC ANGLE
VALVE 38MM**



**PAV50-PNEUMATIC ANGLE
VALVE 50MM**



**PAV63-PNEUMATIC ANGLE
VALVE 63MM**

PSV - PNEUMATIC STRAIGHT VALVE



**PSV25-PNEUMATIC
STRAIGHT VALVE 25MM**



**PSV38-PNEUMATIC
STRAIGHT VALVE 38MM**

BVSE - BUTTERFLY VALVE EPDM SEAL BLACK



**BVSE38-BUTTERFLY VALVE
EPDM SEAL 38MM**



**BVSE50-BUTTERFLY VALVE
EPDM SEAL 50MM**



**BVSE63-BUTTERFLY VALVE
EPDM SEAL 63MM**



**BVSE76-BUTTERFLY VALVE
EPDM SEAL 76MM**



**BVSE101-BUTTERFLY VALVE
EPDM SEAL 101MM**

BVSS - BUTTERFLY VALVE SILICONE SEAL



**BVSS25- BUTTERFLY VALVE
SILICONE SEAL 25MM**



**BVSS32- BUTTERFLY VALVE
SILICONE SEAL 32MM**



**BVSS38-BUTTERFLY VALVE
SILICONE SEAL 38MM**



**BVSS50-BUTTERFLY VALVE
SILICONE SEAL 50MM**



**BVSS63-BUTTERFLY VALVE
SILICONE SEAL 63MM**



**BVSS76-BUTTERFLY VALVE
SILICONE SEAL 76MM**



**BVSS101-BUTTERFLY VALVE
SILICONE SEAL 101MM**

BVMP - BUTTERFLY VALVE HANDLE MULTI POSITION PULL



**BVMP38-BUTTERFLY VALVE
MULTI POSITION 38MM**



**BVMP50-BUTTERFLY VALVE
MULTI POSITION 50MM**



**BVMP63-BUTTERFLY VALVE
MULTI POSITION 63MM**



**BVMP76-BUTTERFLY VALVE
MULTI POSITION 76MM**



**BVMP101-BUTTERFLY
VALVE MULTI POSITION
101MM**

BVHB - BUTTERFLY VALVE SQUEEZE HANDLE (PLASTIC)



**BVHB38-BUTTERFLY VALVE
SQUEEZE HANDLE 38MM**



**BVHB50-BUTTERFLY VALVE
SQUEEZE HANDLE 50MM**



**BVHB63-BUTTERFLY VALVE
SQUEEZE HANDLE 63MM**



**BVHB76-BUTTERFLY VALVE
SQUEEZE HANDLE 76MM**



**BVHB101-BUTTERFLY VALVE
SQUEEZE HANDLE 101MM**

BVHSS - BUTTERFLY VALVE HANDLE SQUEEZE (STAINLESS STEEL)



**BVHSS38-BUTTERFLY VALVE
STAINLESS STEEL SQUEEZE
HANDLE 38MM**



**BVHSS50-BUTTERFLY VALVE
STAINLESS STEEL SQUEEZE
HANDLE 50MM**



**BVHSS63-BUTTERFLY VALVE
STAINLESS STEEL SQUEEZE
HANDLE 63MM**



**BVHSS76-BUTTERFLY VALVE
STAINLESS STEEL SQUEEZE
HANDLE 76MM**



**BVHSS101-BUTTERFLY
VALVE STAINLESS STEEL
SQUEEZE HANDLE 101MM**

BVHSK - BUTTERFLY VALVE HANDLE SCREW KNOB



**BVSK- BUTTERFLY VALVE
SCREW KNOB**



**BVSKL- BUTTERFLY VALVE
SCREW KNOB LARGE
63-101MM**

BVSB - BUTTERFLY STEM BUSH



**BVSB38-BUTTERFLY VALVES
STEM BUSH 38MM**



**BVSB50-BUTTERFLY VALVES
STEM BUSH 50MM**



**BVSB63-BUTTERFLY VALVES
STEM BUSH 63MM**



**BVSB76-BUTTERFLY VALVES
STEM BUSH 76MM**

BVSB - BUTTERFLY STEM BUSH



**BVSB101-BUTTERFLY
VALVES STEM BUSH
101MM**

FNRV - FERRULE NON RETURN VALVE



**FNRV38-FERRULE NON
RETURN VALVE 38MM**



**FNRV50-FERRULE NON
RETURN VALVE 50MM**



**FNRV63-FERRULE NON
RETURN VALVE 63MM**



**FNRV76-FERRULE NON
RETURN VALVE 76MM**

FNRVD - FERRULE NON RETURN VALVE WITH DRAIN



**FNRVD38-FERRULE NON
RETURN VALVE WITH
DRAIN 38MM**



**FNRVD3850-FERRULE NON
RETURN VALVE WITH
DRAIN 38MM ENTRY AND
50MM EXIT**



**FNRVD50-FERRULE NON
RETURN VALVE WITH
DRAIN 50MM**



**FNRVD63-FERRULE NON
RETURN VALVE WITH
DRAIN 63MM**

IBNRV - INNOX BALL NON RETURN VALVE



**IBNRV38-INNOX BALL NON
RETURN VALVE 38MM
WITHOUT DRAIN**



**IBNRV3850-INNOX BALL
NON RETURN VALVE 38MM
IN AND 50MM OUT
WITHOUT DRAIN**



**IBNRV50-INNOX BALL NON
RETURN VALVE 50MM
WITHOUT DRAIN**

IBNRVD - INNOX BALL NON RETURN VALVE WITH DRAIN



**IBNRVD38-INNOX BALL
NON RETURN VALVE 38MM
WITH DRAIN**



**IBNRVD3850-INNOX BALL
NON RETURN VALVE 38MM
IN AND 50MM OUT WITH
DRAIN**



**IBNRVD50-INNOX BALL
NON RETURN VALVE 50MM
WITH DRAIN**

IINRV - INNOX INTERNAL NON RETURN VALVE



**IINRV38- INNOX INTERNAL
NON RETURN VALVE 38 KIT**



**IINRV50- INNOX INTERNAL
NON RETURN VALVE 50MM
KIT**

NRVDV - VAT NON RETURN VALVE WITH DRAIN



**NRVDV38-VAT NON
RETURN VALVE WITH
DRAIN 38MM**



**NRVDV50-VAT NON
RETURN VALVE WITH
DRAIN 50MM**

NRV - NON RETURN VALVE SPARE PARTS



NRVD-NRV DRAIN



NRVDSC-NRV DRAIN SEAL



NRVG38-NRV GUIDE 38MM



NRVG50-NRV GUIDE 50MM

NRV - NON RETURN VALVE SPARE PARTS



NRVG63-NRV GUIDE 63MM



**NRVGA38-NRV GUIDE
ANGLE TYPE 38MM**



**NRVGA50-NRV GUIDE
ANGLE TYPE 50MM**



**NRVOS38-NON RETURN
VALVE OUTER SEAL 38MM**



**NRVOS50-NON RETURN
VALVE OUTER SEAL 50MM**



**NRVOS63- NON RETURN
VALVE OUTER SEAL 63MM**



**NRVOSA38-NRV OUTER
SEAL 38MM**



**NRVOSA50-NRV OUTER
SEAL 50MM**



**NRVSG38-NON RETURN
VALVE SEAL GREEN 38MM**



**NRVSG50-NON RETURN
VALVE SEAL GREEN 50MM**



**NRVSPH-NRV SPRING
HEAVY**



NRVSPL-NRV SPRING LIGHT



**NRVSS38-NRV EPDM STEM
SEAL 38MM**



**NRVSS50-NRV EPDM STEM
SEAL 50MM**



**NRVSS63-NRV EPDM STEM
SEAL 63MM**



**NRVSSA38- NON RETURN
VALVE STEM SEAL ANGLE
38MM**

NRV - NON RETURN VALVE SPARE PARTS



NRVSSA50-NON RETURN VALVE STEM SEAL ANGLE 50MM



NRVST38-NRV STEM 38MM



NRVST50-NRV STEM 50MM



NRVST63-NRV STEM 63MM



NRVSTA38-NRV STEM ANGLE TYPE 38MM



NRVSTA50-NRV STEM ANGLE TYPE 50MM



NRVSTWMS-NRV STEM FOR WMS 50MM



NRVWED-NRV WELD END DRAIN

IBNRV - ACCESSORIES



IBNRVBB38-INNOX BALL NRV BALL EPDM 38MM



IBNRVBB50-INNOX BALL NRV BALL EPDM 50MM



IBNRVBW38-INNOX BALL NRV BALL PTFE 38MM



IBNRVBW50-INNOX BALL NRV BALL PTFE 50MM



IBNRVT38-INNOX BALL NRV TEE 38MM



IBNRVT50-INNOX BALL NRV TEE 50MM

VWNRV - VAT WASH CIP NON RETURN VALVE



**VWNRV-VAT WASH NON
RETURN VALVE**



**VWNRVSK-VAT WASH NRV
SERVICE KIT**

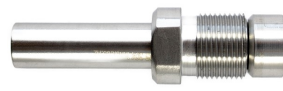
INRVDE - INNOX NON RETURN VALVE DRAIN EXTENTIONS



**INRVDE19-INNOX NON
RETURN VALVE DRAIN
EXTENTION 19MM**



**INRVDE9019-INNOX NON
RETURN VALVE DRAIN
EXTENTION 90 DEGREE
BEND 19MM**



**INRVDE95-INNOX NON
RETURN VALVE DRAIN
EXTENTION 9.5MM**

IMFB - INNOX MILK FROTH BUSTER



**IMFB-INNOX MILK FROTH
BUSTER**



**IMFBFTO38-INNOX MILK
FROTH BUSTER FERRULED
19MM TAKE OFF**



**IMFBFTO50- INNOX MILK
FROTH BUSTER FERRULED
19MM TAKE OFF**

RJTL - RJT LINER



**RJTL38-RJT WELD END
LINER 38MM**



**RJTL50-RJT WELD END
LINER 50MM**



**RJTL63-RJT WELD END
LINER 63MM**



**RJTL76-RJT WELD END
LINER 76MM**

RJTL - RJT LINER



**RJTL101-RJT WELD END
LINER 101MM**



**RJTL152-RJT WELD END
LINER 152MM**

RJTLR - RJT REDUCING LINER



**RJTLR3825-RJT LINER
REDUCER 38MM-25MM**



**RJTLR3832-RJT LINER
REDUCER 38MM-32MM**



**RJTLR5032-RJT LINER
REDUCER 50MM-32MM**



**RJTLR5038-RJT LINER
REDUCER 50MM-38MM**



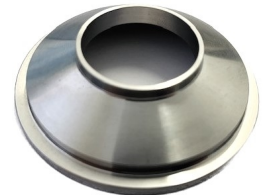
**RJTLR6338-RJT LINER
REDUCER 63MM-38MM**



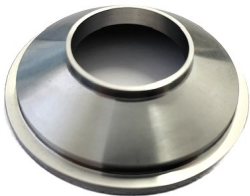
**RJTLR6350-RJT LINER
REDUCER 63MM-50MM**



**RJTLR7650-RJT LINER
REDUCER 76MM-50MM**



**RJTLR7663-RJT LINER
REDUCER 76MM-63MM**



**RJTLR10150-RJT LINER
REDUCER 101MM-50MM**



**RJTLR10163-RJT LINER
REDUCER 101MM-63MM**



**RJTLR10176-RJT LINER
REDUCER 101MM-76MM**

RJTM - RJT MALE



**RJTM38-RJT WELD END
MALE 38MM**



**RJTM50-RJT WELD END
MALE 50MM**



**RJTM63-RJT WELD END
MALE 63MM**



**RJTM76-RJT WELD END
MALE 76MM**



**RJTM101-RJT WELD END
MALE 101MM**



**RJTM152-RJT WELD END
MALE 152MM**

RJTE - RJT EXPANDING LINERS AND MALES



**RJTEL38-RJT EXPANDING
LINER 38MM**



**RJTEL50-RJT EXPANDING
LINER 50MM**



**RJTEM38- RJT EXPANDING
MALE 38MM**



**RJTEM50-RJT EXPANDING
MALE 50MM**

RJTSN - RJT SLOTTED NUT



**RJTSN38-RJT SLOTTED NUT
38MM**



**RJTSN50-RJT SLOTTED NUT
50MM**



**RJTSN63-RJT SLOTTED NUT
63MM**



**RJTSN76-RJT SLOTTED NUT
76MM**

RJTSN - RJT SLOTTED NUT



RJTBLANK - RJT BLANK



RJTS - RJT STEP SEAL EPDM (EPDM SUITABLE FOR -40 TO 120 DEGREE C)



RJTS - RJT STEP SEAL EPDM (EPDM SUITABLE FOR -40 TO 120 DEGREE C)



**RJTS63-RJT EPDM STEP SEAL
63MM**



**RJTS76-RJT EPDM STEP SEAL
76MM**



**RJTS101-RJT EPDM STEP
SEAL 101MM**

RJTNS - RJT NITRILE STEP SEAL (NITRILE SUITABLE FOR -35 TO 120 DEGREE C)



**RJTNS38-RJT NITILE STEP
SEAL 38MM**



**RJTNS50-RJT NITILE STEP
SEAL 50MM**



**RJTNS63-RJT NITILE STEP
SEAL 63MM**



**RJTNS76-RJT NITILE STEP
SEAL 76MM**



**RJTNS101-RJT NITILE STEP
SEAL 101MM**



**RJTNS152-RJT NITILE STEP
SEAL 152MM**

RJTOS - RJT ORING TYPE SEAL EPDM (EPDM SUITABLE FOR -40 TO 120 DEGREE C)



**RJTOS38-RJT ORING EPDM
SEAL 38MM**



**RJTOS50-RJT ORING EPDM
SEAL 50MM**



**RJTOS63-RJT ORING EPDM
SEAL 63MM**



**RJTOS76-RJT O'RING EPDM
SEAL 76MM**

RJTOS - RJT ORING TYPE SEAL EPDM (EPDM SUITABLE FOR -40 TO 120 DEGREE C)



**RJTOS101-RJT ORING EPDM
SEAL 101MM**

FRJT - FERRULE TO RJT NUT AND LINER



**FRJT38-FERRULE 38MM TO
RJT NUT AND LINER 38MM**



**FRJT50-FERRULE 50MM TO
RJT NUT AND LINER 50MM**



**FRJT5038-FERRULE 38MM
TO RJT NUT AND LINER
50MM**



**FRJT5063-FERRULE 63MM
TO RTJ NUT AND LINER
50MM**



**FRJT63-FERRULE 63MM TO
RJT NUT AND LINER 63MM**



**FRJT76-FERRULE TO RJT
NUT AND LINER 76MM**



**FRJT101-FERRULE TO RJT
NUT AND LINER 101MM**

FRJTM - FERRULE TO RJT MALE



**FRJTM38-FERRULE TO RJT
MALE 38MM**



**FRJTM50-FERRULE TO RJT
MALE 50MM**



**FRJTM63-FERRULE TO RJT
MALE 63MM**



**FRJTM76-FERRULE TO RJT
MALE 76MM**

FRJTM - FERRULE TO RJT MALE



**FRJT101-FERRULE TO RJT
MALE 101MM**

RJTNLM - RJT NUT AND LINER TO RJT MALE



**RJTNLM38-RJT NUT AND
LINER TO RJT MALE 38MM**



**RJTNLM50-RJT NUT AND
LINER TO RJT MALE 50MM**



**RJTNLM63-RJT NUT AND
LINER TO RJT MALE 63MM**



**RJTNLM76-RJT NUT AND
LINER TO RJT MALE 76MM**



**RJTNLM101-RJT NUT AND
LINER TO RJT MALE 101
MM**

RJTS - RJT SPANNER



**RJTSL-RJT SPANNER LARGE
51-121MM**



**RJTSS-RJT SPANNER SMALL
32-76MM**

IFSH - INNOX FLOAT SWITCH HOUSING



IFSH38-INNOX FLOAT SWITCH HOUSING ONLY



IFSHCWLS38-INNOX FLOAT SWITCH HOUSING COMPLETE WITH LEVEL SWITCH

ILS - INNOX LEVEL SWITCHES



ILSB16- BLACK PLASTIC LEVEL SWITCH 16MM 1-100V DC



ISSLSV75-INNOX STAINLESS STEEL LEVEL SWITCH VERTICAL 75MM LONG



ISSLSRA16-INNOX STAINLESS STEEL LEVEL SWITCH RIGHT ANGLE 16MM



ISSLSS16-INNOX STAINLESS STEEL LEVEL SWITCH STRAIGHT 16MM



ILLSG-INNOX LIQUID LEVEL SWITCH GREY ACID AND ALKALINE RESISTANT



ILSW10-WHITE 10MM LEVEL SWITCH



GBWLS WHITE LEVEL SWITCH CHEMICAL RESISTANT 85 DEGREE C

IBMT - INNOX 5/8 BOSS MOUNT TUBE (MIRROR FINISH)



IBMT25-INNOX 5/8 BOSS MOUNT TUBE 25MM



IBMT32-INNOX 5/8 BOSS MOUNT TUBE 32MM



IBMT38-INNOX 5/8 BOSS MOUNT TUBE 38MM



IBMT50-INNOX 5/8 BOSS MOUNT TUBE 50MM

IBMT - INNOX 5/8 BOSS MOUNT TUBE (MIRROR FINISH)



IBMTM - INNOX 5/8 BOSS MOUNT TUBE (MATT FINISH)



IBMTP - INNOX BOSS MOUNT TUBE PLAIN (MIRROR FINISH)



IBMTP - INNOX BOSS MOUNT TUBE PLAIN (MIRROR FINISH)



**IBMTP76-INNOX BOSS
MOUNT PLAIN 76MM**



**IBMTP101-INNOX BOSS
MOUNT PLAIN 101MM**

IBMTPM - INNOX BOSS MOUNT TUBE PLAIN (MATT FINISH)



**IBMTPM38-INNOX TUBE
CLAMP PLAIN 38MM**



**IBMTPM50-INNOX TUBE
CLAMP PLAIN 50MM**



**IBMTPM63-INNOX TUBE
CLAMP PLAIN 63MM**



**IBMTPM76-INNOX TUBE
CLAMP PLAIN 76MM**



**IBMTPM101-INNOX TUBE
CLAMP PLAIN 101MM**

IBMT - ACCESSORIES



**IBMTBT-BOSS MOUNT
BRANCHES TEE**



**IBMTBC-BOSS MOUNT
BRANCHES CROSS**



**IBMTBO-INNOX BOSS
MOUNT TUBE BOSS ONLY**



**IBMWMIM8-INNOX BOSS
MOUNT WALL MOUNT
INSERT M8**

IBMT - ACCESSORIES



**IBMWMIM10-INNOX BOSS
MOUNT WALL MOUNT
INSERT M10**



**IBMWMIM12-INNOX BOSS
MOUNT WALL MOUNT
INSERT M12**

IBMWM - INNOX BOSS MOUNT WALL MOUNT



**IBMWMD-INNOX BOSS
MOUNT WALL MOUNT
DIAMOND M8**



**IMBWMR- 5/8 BOSS WALL
MOUNT RECTANGLE**



**IBMWMT-INNOX BOSS
MOUNT WALL MOUNT
DIAMOND M10 AND
3.5MM BASE**

ISSR16 - INNOX STAINLESS STEEL SOLID ROD 5/8" 16MM



**ISSR16-INNOX STAINLESS
STEEL SOLID ROD 16MM
1.5M**

ISMB - INNOX SLIDE MOUNT BRACKET



**ISMB32-INNOX SLIDE
MOUNT BRACKET 32MM**



**ISMB38-INNOX SLIDE
MOUNT BRACKET 38MM**



**ISMB50-INNOX SLIDE
MOUNT BRACKET 50MM**



**ISMB63-INNOX SLIDE
MOUNT BRACKET 63MM**

ISMB - INNOX SLIDE MOUNT BRACKET



**ISMB76-INNOX SLIDE
MOUNT BRACKET 76MM**



**ISMB101-INNOX SLIDE
MOUNT BRACKET 101MM**



**HLMP15075-HIGHLINE
MOUNTING PLATE 150MM
X 75MM**

UPVCWB - UPVC WALL BRACKETS



**UPVCWB15-UPVC WALL
BRACKET 15MM**



**UPVCWB20-UPVC WALL
BRACKET 20MM**



**UPVCWB25-UPVC WALL
BRACKET 25MM**



**UPVCWB32-UPVC WALL
BRACKET 32MM**



**UPVCWB40-UPVC WALL
BRACKET 40MM**



**UPVCWB50-UPVC WALL
BRACKET 50MM**



**UPVCWB65-UPVC WALL
BRACKET 65MM**



**UPVCWB80-UPVC WALL
BRACKET 80MM**

IFWP - INNOX FERRULE WALL PLATE



**IFWP32-INNOX FERRULE
WALL PLATE 32MM
COMPLETE WITH SELF DRILL
SCREWS**



**IFWP38-INNOX FERRULE
WALL PLATE 38MM
COMPLETE WITH SELF DRILL
SCREWS**



**IFWP50-INNOX FERRULE
WALL PLATE 50MM
COMPLETE WITH SELF DRILL
SCREWS**



**IFWP63-INNOX FERRULE
WALL PLATE 63MM
COMPLETE WITH SELF DRILL
SCREWS**

IFWP - INNOX FERRULE WALL PLATE



**IFWP76-INNOX FERRULE
WALL PLATE 76MM
COMPLETE WITH SELF DRILL
SCREWS**



**IFWP101-INNOX FERRULE
WALL PLATE 101MM
COMPLETE WITH SELF DRILL
SCREWS**



**ISSCS4219-INNOX
STAINLESS STEEL
COUNTERSUNK SELF DRILL
SCREW**

IRSB - INNOX ROTARY SPRAY BALL CIP



**IRSBF20-INNOX ROTARY
SPRAY BALL CIP 20MM
FEMALE**



**IRSBFER38-INNOX ROTARY
SPRAY BALL CIP 38MM
FERRULE**



**IRSBM20-INNOX ROTARY
SPRAY BALL CIP 20MM
MALE**

ISB - INNOX FERRULED STATIC SPRAY BALL



**ISB38- INNOX FERRULE
SPRAY BALL 38MM**



**ISB50-INNOX FERRULE
SPRAY BALL 50MM**

DTPF - DAIRY TUBE PRESS FITTINGS



**DTPFC50- DAIRY TUBE
PRESS FITTING EQUAL
CROSS**



**DTPF4550-DAIRY TUBE
PRESS FITTING ELBOW 45
DEGREE 50MM**



**DTPFE9050-DAIRY TUBE
PRESS FITTING ELBOW 90
DEGREE 50MM**



**DTPFEC50-DAIRY TUBE
PRESS FITTING END CAP
50MM**

DTPF - DAIRY TUBE PRESS FITTINGS



DTPFET50-DAIRY TUBE PRESS FITTING EQUAL TEE 50MM



DTPFFF50-DAIRY TUBE PRESS FITTINGS FEMALE BSP TO TUBE 50MM



DTPFFT5050-DAIRY TUBE PRESS FITTING 50MM BSP FEMALE THREAD 50MM



DTPFMT5040-DAIRY TUBE PRESS FITTING 50 MM BSP MALE THREAD 40MM



DTPFMT5050-DAIRY TUBE PRESS FITTING 50MM BSP MALE THREAD 50MM



DTPFSC50-DAIRY TUBE PRESS FITTING STRAIGHT CONNECTOR 50.8MM



DTPFTBSP504050-DAIRY TUBE PRESS FITTING TEE BSP MALE BRANCH 50-40-50 MM



DTPFTBSP505050-DAIRY TUBE PRESS FITTING TEE BSP MALE BRANCH 50-50-50 MM

ISWB - INNOX SOCKET WELD



ISWB4538-INNOX SOCKET WELD ELBOW 45 DEGREE 38MM



ISWB4550-INNOX SOCKET WELD ELBOW 45 DEGREE 50MM



ISWB9038-INNOX SOCKET WELD ELBOW 38MM



ISWB9050-INNOX SOCKET WELD ELBOW 50MM



ISWET38-INNOX SOCKET WELD EQUAL TEE 38MM



ISWET50-INNOX SOCKET WELD EQUAL TEE 50MM



ISWM3840-INNOX SOCKET WELD NIPPLE 38MM TUBE TO 38MM BSP



ISWM5040-INNOX SOCKET WELD NIPPLE 50MM TUBE TO 38MM BSP

ISWB - INNOX SOCKET WELD



ISWSR5038-INOX SOCKET WELD CONCENTRIC REDUCER 50MM TO 38MM



ISWSS38- INNOX SOCKET WELD STRAIGHT CONNECTOR 38MM



ISWSS38- INNOX SOCKET WELD STRAIGHT CONNECTOR 38MM

DTAF - DAIRY TUBE ADJUSTABLE FOOT



DTAF32-DAIRY TUBE PUSH SCREW FOOT 32MM



DTAF38-DAIRY TUBE PUSH SCREW FOOT 38MM



DTAF50-DAIRY TUBE PUSH SCREW FOOT 50MM



DTAF5050-SQUARE SECTION PUSH SCREW FOOT 50X50MM

FTRANSC - FERRULE TRANSITION CONE



FTRANSC76-FERRULE TRANSITION CONE 76MM



FTRANSC101-FERRULE TRANSITION CONE 101MM

RJTTRANS - RJT TRANSITION CONE SEAL



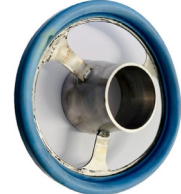
RJTTRANS76A-RJT TRANSITION CONE 76MM TYPE A



RJTTRANS101A- RJT TRANSITION CONE 101MM TYPE A



RJTTRANS76B-RJT TRANSITION CONE 76MM TYPE B



RJT TRANSITION CONE 101MM TYPE B

IFTA - INNOX FERRULE THERMOWELL ADAPTOR

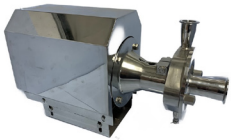


**IFTA38-INNOX FERRULE
THERMOWELL ADAPTOR
38MM**

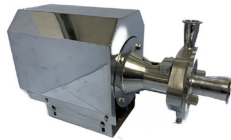


**IFTA50-INNOX FERRULE
THERMOWELL ADAPTOR
50MM**

IMPGB - INNOX MILK PUMP GB



**IMPGB1.5-INNOX MILK
PUMP GB 1.5KW COMPLETE
WITH S/S COVER AND NEW
TILT MOUNTING PLATE**



**IMPGB2.2-INNOX MILK
PUMP GB 2.2KW COMPLETE
WITH S/S COVER AND NEW
TILT MOUNTING PLATE**



**IMGBS--INNOX GB TYPE
MILK PUMP SEAL
(DS-QL-22) SUITABLE FOR
1.5 AND 2.2KW**



**IMPGBCMP-INNOX MILK
PUMP GB COVER AND
MOUNTING PLATE ONLY**



**IMGBSA-INNOX MILK PUMP
GB SHAFT ASSEMBLY**



**IMPGBI15-INNOX MILK
PUMP GB IMPELLOR ONLY
1.5KW**



**ABB1.5-ABB 1.5KW ELCTRIC
MOTOR**



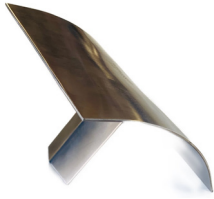
**ABB2.2-ABB 2.2KW ELCTRIC
MOTOR**

IMPISA - INNOX MILK PUMP SEAL MK2



**IMPISA1.5-INNOX MILK
PUMP A SEAL 1.5**

IVP - INNOX VORTEX PLATE



**IVP38-INNOX VORTEX
PLATE 38MM 150X150MM**



**IVP50-INNOX VORTEX
PLATE 50MM 150X150MM**

IMCS - INNOX MILK CUP SHELL



**IMCSL-INNOX MILK CUP
SHELL LIGHT 220G 155MM
18MM**



**IMCSH-INNOX MILK CUP
SHELL HEAVY 320G 155MM
17MM**

IHT - INNOX HEADER TANK



**IHT-INNOX HEADER TANK
500x155x300MM WITH LID**



**IHTS-INNOX HEADER TANK
SMALL 300X200X180MM
WITH LID**



**IHTMP-INNOX HEADER
TANK MOUNTING PLATE**

ISCL - INNOX SNAP CLAMP (ONE SIZE FITS ALL)



**ISCL28-INNOX SNAP CLAMP
LARGE 28MM**

ISN - INNOX SPRAY NOZZLE



**ISN20-INNOX SPRAY
NOZZLE 20MM MALE BSP**

IVC - INNOX VACUUM CLAMP



**IVC95-INNOX VACUUM
CLAMP FOR 9.5MM**



**IVC95D-INNOX VACUUM
CLAMP 9.5MM DIAPHRAM**



**IVCL - INNOX VACUUM
CLAMP LARGE**



**IVCLD-INNOX VACUUM
CLAMP LARGE DIAPHRAM**

IVO - INNOX VAT OUTLET



**IVO38C-INNOX VAT OUTLET
WITH 38MM FERRULE
OUTLET COMPLETE**



**IVO38-INNOX VAT OUTLET
WITH 38MM FERRULE**



**IVO50C-INNOX VAT OUTLET
WITH 50MM FERRULE
OUTLET COMPLETE**



**IVO50-INNOX VAT OUTLET
WITH 50MM FERRULE**

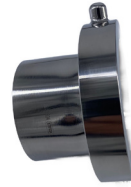
VO - VAT OUTLET FITTINGS



**VORJTB63-VAT BAYONET
BEND 90 DEGREE TO RJT
NUT AND LINER 63MM**



**FVB63-FERRULE TO VAT
BAYONET 63MM**



**WEVB-WELD END VAT
BAYONET 63MM**



**FRJTM9063-FERRULE TO RJT
MALE LONG BEND 90
DEGREE 63MM**

AJC - AGITATOR COUPLER



AJC-AGITATOR COUPLER

ISSTST - INNOX STAINLESS STEEL TEAT SPRAY TANK



**ISSTST-INNOX STAINLESS STEEL
TEAT SPRAY TANK COMPLETE
WITH ALL FITTINGS INCLUDING
REGULATOR, NRV VALVES AND
SIGHTGLASS APPROX 120 LITRE**



**ISSTST-INNOX STAINLESS
STEEL TEAT SPRAY TANK**

IVT - INNOX VACUUM INTERCEPTOR TANK



**IVT-INNOX VACUUM
INTERCEPTOR TANK 2 X 4"
PORTS AND 1 X 50MM
FERRULE WITH DRAIN**

IR - INNOX REGULATOR VACUUM 50-3500 L/MIN



**IR3500-INNOX VACUUM
REGULATOR 3500 LITRE
25MM BSP MALE THREAD**

ISSVE - INNOX STAINLESS STEEL VIBRATION ELEMATOR



**ISSVE10076-INNOX
STAINLESS STEEL
VIBRATION ELEMATOR
100MM LONG 76MM**

IVPFE45 - INNOX VACUUM PUSH FIT 45 DEGREE ELBOW



**IVPFE4550-INNOX VACCU
M PUSH FITTING 45 DEGREE
ELBOW 50MM**



**IVPFE4563-INNOX VACCU
M PUSH FITTING 45 DEGREE
ELBOW 63MM**



**IVPFE4576-INNOX VACCU
M PUSH FITTING 45 DEGREE
ELBOW 76MM**



**IVPFE45101-INNOX
VACCU M PUSH FITTING 45
DEGREE ELBOW 101MM**

IVPFE90 - INNOX VACUUM PUSH FIT 90 DEGREE ELBOW



**IVE9050-INNOX VACUUM
PUSH FIT ELBOW 90 DEGREE**



**IVPFE9063-INNOX VACUUM
PUSH FIT ELBOW 90 DEGREE**



**IVPFE9076-INNOX VACUUM
PUSH FIT ELBOW 90 DEGREE**



**IVPFE90101-INNOX
VACUUM PUSH FIT ELBOW
90 DEGREE**

IVPFET - INNOX VACUUM PUSH FIT EQUAL TEE



**IVPFET50-INNOX VACCU
M PUSH FITTING EQUAL TEE
50MM**



**IVPFET63-INNOX VACCU
M PUSH FITTING EQUAL TEE
63MM**



**IVPFET76-INNOX VACCU
M PUSH FITTING EQUAL TEE
76MM**



**IVPFET101-INNOX VACCU
M PUSH FITTING EQUAL TEE
101MM**

IVPFR - INNOX VACUUM PUSH FIT STRAIGHT REDUCER



**IVPFR6350-INOX VACCU
PUSH FITTING REDUCER
TUBE TO PUSH FIT
63/50MM**



**IVPFR7650-INOX VACCU
PUSH FITTING REDUCER
TUBE TO PUSH FIT
76/50MM**



**IVPFR7663-INOX VACCU
PUSH FITTING REDUCER
TUBE TO PUSH FIT
76/63MM**



**IVPFR10150-INOX
VACCU PUSH FITTING
REDUCER TUBE TO PUSH FIT
101/50MM**



**IVPFR10163-INOX
VACCU PUSH FITTING
REDUCER TUBE TO PUSH FIT
101/63MM**



**IVPFR10176-INOX
VACCU PUSH FITTING
REDUCER TUBE TO PUSH FIT
101/76MM**

IVPFRT - INNOX VACUUM PUSH FIT REDUCING TEE



**IVPFRT635063-INOX
VACCU FITTING
REDUCING TEE 63-50-63MM**



**IVPFRT765076-INOX
VACCU FITTING
REDUCING TEE 76-50-76MM**



**IVPFRT766376-INOX
VACCU FITTING
REDUCING TEE 76-63-76MM**



**IVPFRT10150101-INOX
VACCU FITTING
REDUCING TEE
101-50-101MM**



**IVPFRT10163101-INOX
VACCU FITTING
REDUCING TEE
101-63-101MM**



**IVPFRT10176101-INOX
VACCU FITTING
REDUCING TEE
101-76-101MM**

IVPFSC - INNOX VACUUM PUSH FIT STRAIGHT COUPLING



**IVPFSC50-INNOX VACCUM
PUSH FITTING STRAIGHT
COUPLING 50MM**



**IVPFSC63-INNOX VACCUM
PUSH FITTING STRAIGHT
COUPLING 63MM**



**IVPFSC76-INNOX VACCUM
PUSH FITTING STRAIGHT
COUPLING 76MM**



**IVPFSC101-INNOX VACCUM
PUSH FITTING STRAIGHT
COUPLING 101MM**



**IVPFSCA101-INNOX
VACUUM PUSH FIT
STRAIGHT CONNECTOR A
101MM**

SSHN - STAINLESS STEEL HEX NUTS



**SSH06-STAINLESS STEEL HEX
NUT 6MM**



**SSHN8-STAINLESS STEEL
HEX NUT 8MM**



**SSHN10-STAINLESS STEEL
HEX NUT 10MM**



**SSHN12-STAINLESS STEEL
HEX NUT 12MM**

SSSW -STAINLESS STEEL SQUARE WASHER



**SSSW6-STAINLESS STEEL
SQUARE WASHER 6MM**



**SSSW8-STAINLESS STEEL
SQUARE WASHER 8MM**



**SSSW10-STAINLESS STEEL
SQUARE WASHER 10MM**



**SSSW12-STAINLESS STEEL
SQUARE WASHER 12MM**

SSTR - STAINLESS STEEL THREADED ROD



**SSTR06-STAINLESS STEEL
THREADED ROD 6MM 1M**



**SSTR08-STAINLESS STEEL
THREADED ROD 08MM 1M**



**SSTR10-STAINLESS STEEL
THREADED ROD 10MM 1M**



**SSTR12-STAINLESS STEEL
THREADED ROD 12MM 1M**

SSTF - STAINLESS STEEL TANK FITTING 220MM



**SSTF20-STAINLESS STEEL
TANK FITTING 20MM**



**SSTF25-STAINLESS STEEL
TANK FITTING 25MM**



**SSTF32-STAINLESS STEEL
TANK FITTING 32MM**



**SSTF40-STAINLESS STEEL
TANK FITTING 40MM**



**SSFT50-STAINLESS STEEL
TANK FITTING 50MM**



**SSTF65-STAINLESS STEEL
TANK FITTING 65MM**



**SSTF80-STAINLESS STEEL
TANK FITTING 80MM**

SSSTFW - STAINLESS STEEL TANK FITTING WASHER



**SSSTFW20-STAINLESS STEEL
TANK FITTING WASHER
20MM**



**SSSTFW25-STAINLESS STEEL
TANK FITTING WASHER
25MM**



**SSSTFW32-STAINLESS STEEL
TANK FITTING WASHER
32MM**



**SSSTFW40-STAINLESS STEEL
TANK FITTING WASHER
40MM**

SSSTFW - STAINLESS STEEL TANK FITTING WASHER



**SSSTFW50-STAINLESS STEEL
TANK FITTING WASHER
50MM**



**SSSTFW65-STAINLESS STEEL
TANK FITTING WASHER
65MM**



**SSSTFW80-STAINLESS STEEL
TANK FITTING WASHER
80MM**

TFS - TANK FITTINGS SEALS



**TFS20-TANK FITTING SEALS
20MM**



**TFS25-TANK FITTING SEALS
25MM**



**TFS32-TANK FITTING SEALS
32MM**



**TFS40-TANK FITTING SEALS
40MM**



**TFS50-TANK FITTING SEALS
50MM**



**TFS65-TANK FITTING SEALS
65MM**



**TFS80-TANK FITTING SEALS
80MM**

SSSTF - STAINLESS STEEL SHORT TANK FITTINGS



**SSSTF20- SHORT STAINLESS
STEEL TANK FITTING
(14.50MM LONG) LEFT
HAND THREAD**



**SSSTF25- SHORT STAINLESS
STEEL TANK FITTING
(16.50MM LONG) LEFT
HAND THREAD**



**SSSTF40- SHORT STAINLESS
STEEL TANK FITTING
(17.50MM LONG) LEFT
HAND THREAD**



**SSSTF50- SHORT STAINLESS
STEEL TANK FITTING
(19.50MM LONG) LEFT
HAND THREAD**

ISSABM - INNOX STAINLESS STEEL ANCHOR BOLT



**ISSAB-INNOX STAINLESS
STEEL ANCHOR BOLT M8 X
50MM**



**ISSAB-INNOX STAINLESS
STEEL ANCHOR BOLT M10 X
60MM**



**ISSAB-INNOX STAINLESS
STEEL ANCHOR BOLT M12 X
60MM**



**ISSAB-INNOX STAINLESS
STEEL ANCHOR BOLT M16 X
80MM**



**ISSTEX6325-INNOX
STAINLESS STEEL 410 TEX
SELF DRILL SCREW**

IVWM - INNOX VAT WASH MANIFOLD (SCHEDULE PIPE)



**IVWM-INNOX VAT WASH
MANIFOLD**

IT - INNOX THERMOMETER



**ITPS-INNOX TANK PROBE
SOCKET**



**IT101-INNOX
THERMOMETER 101MM
BATTERY OPERATED 5M
PROBE**



**IT101C -INNOX
THERMOMETER COMPLETE
WITH INNOX TANK PROBE
SOCKET**

WR - WATER RISER



BSPE90MF - BSP ELBOW 90 DEGREE MALE FEMALE 316



BSPE90FF - BSP ELBOW 90 DEGREE FEMALE FEMALE 316



**BSPE90FF06-BSP ELBOW 90
DEGREE FEMALE FEMALE
06MM 1/8"**



**BSPE90FF08-BSP ELBOW 90
DEGREE FEMALE FEMALE
08MM 1/4"**



**BSPE90FF10-BSP ELBOW 90
DEGREE FEMALE FEMALE
10MM 3/8"**



**BSPE90FF15-BSP ELBOW 90
DEGREE FEMALE FEMALE
15MM 1/2"**



**BSPE90FF20-BSP ELBOW 90
DEGREE FEMALE FEMALE
20MM 3/4"**



**BSPE90FF25-BSP ELBOW 90
DEGREE FEMALE FEMALE
25MM 1"**



**BSPE90FF32-BSP ELBOW 90
DEGREE FEMALE FEMALE
32MM 1 1/4"**



**BSPE90FF40-BSP ELBOW 90
DEGREE FEMALE FEMALE
40MM 1 1/2"**



**BSPE90FF50-BSP ELBOW 90
DEGREE FEMALE FEMALE
50MM 2"**



**BSPE90FF65-BSP ELBOW 90
DEGREE FEMALE FEMALE
65MM 2.5"**

BSPE45FF - BSP ELBOW 45 DEGREE FEMALE FEMALE 316



**BSPE45FF06-BSP ELBOW 45
DEGREE FEMALE FEMALE
06MM 1/8"**



**BSPE45FF08-BSP ELBOW 45
DEGREE FEMALE FEMALE
08MM 1/4"**



**BSPE45FF10-BSP ELBOW 45
DEGREE FEMALE FEMALE
10MM 3/8"**



**BSPE45FF15-BSP ELBOW 45
DEGREE FEMALE FEMALE
15MM 1/2"**

BSPE45FF - BSP ELBOW 45 DEGREE FEMALE FEMALE 316



**BSPE45FF20-BSP ELBOW 45
DEGREE FEMALE FEMALE
20MM 3/4"**



**BSPE45FF25-BSP ELBOW 45
DEGREE FEMALE FEMALE
25MM 1"**



**BSPE45FF32-BSP ELBOW 45
DEGREE FEMALE FEMALE
32MM 1 1/4"**



**BSPE45FF40-BSP ELBOW 45
DEGREE FEMALE FEMALE
40MM 1 1/2"**



**BSPE45FF50-BSP ELBOW 45
DEGREE FEMALE FEMALE
50MM 2"**

BSPET - BSP EQUAL TEE



**BSPET06-BSP EQUAL TEE
06MM 1/8"**



**BSPET08-BSP EQUAL TEE
08MM 1/4"**



**BSPET10-BSP EQUAL TEE
10MM 3/8"**



**BSPET15-BSP EQUAL TEE
15MM 1/2"**



**BSPET20-BSP EQUAL TEE
20MM 3/4"**



**BSPET25-BSP EQUAL TEE
25MM 1"**



**BSPET32-BSP EQUAL TEE
32MM 1 1/4"**



**BSPET40-BSP EQUAL TEE
40MM 1 1/2"**

BSPET - BSP EQUAL TEE



**BSPET50-BSP EQUAL TEE
50MM 2"**



**BSPET65- BSP EQUAL TEE
65MM 2.5"**

BSPS - BSP SOCKET 316



**BSPS06-BSP SOCKET 06MM
1/8"**



**BSPS08-BSP SOCKET 08MM
1/4"**



**BSPS10-BSP SOCKET 10MM
3/8"**



**BSPS15-BSP SOCKET 15MM
1/2"**



**BSPS20-BSP SOCKET 20MM
3/4"**



**BSPS25-BSP SOCKET 25MM
1"**



**BSPS32-BSP SOCKET 32MM
1 1/4"**



**BSPS40-BSP SOCKET 40MM
1 1/2"**



**BSPS50-BSP SOCKET 50MM
2"**



**BSPS65-BSP SOCKET 65MM
2 1/2"**

BSPMU - BSP MAC UNION 316



**BSPMU08-BSP MAC UNION
08MM 1/4"**



**BSPMU10-BSP MAC UNION
10MM 3/8"**



**BSPMU15-BSP MAC UNION
15MM 1/2"**



**BSPMU20-BSP MAC UNION
20MM 3/4"**



**BSPMU25-BSP MAC UNION
25MM 1"**



**BSPMU32-BSP MAC UNION
32MM 1 1/4"**



**BSPMU40-BSP MAC UNION
40MM 1 1/2"**



**BSPMU50-BSP MAC UNION
50MM 2"**

BSPHN - BSP HEX NIPPLE 316



**BSPHN06-BSP HEX NIPPLE
06MM 1/8"**



**BSPHN08-BSP HEX NIPPLE
08MM 1/4"**



**BSPHN10-BSP HEX NIPPLE
10MM 3/8"**



**BSPHN15-BSP HEX NIPPLE
15MM 1/2"**



**BSPHN20-BSP HEX NIPPLE
20MM 3/4"**



**BSPHN25-BSP HEX NIPPLE
25MM 1"**



**BSPHN32-BSP HEX NIPPLE
32MM 1 1/4"**



**BSPHN40-BSP HEX NIPPLE
40MM 1 1/2"**

BSPHN - BSP HEX NIPPLE 316



**BSPHN50-BSP HEX NIPPLE
50MM 2"**



**BSPHN65- BSP HEX NIPPLE
65MM 2.5"**

BSPHT - BSP HOSE TAIL 316



**BSPHT06-BSP HOSE TAIL
06MM 1/8"**



**BSPHT08-BSP HOSE TAIL
08MM 1/4"**



**BSPHT10-BSP HOSE TAIL
10MM 3/8"**



**BSPHT15-BSP HOSE TAIL
15MM 1/2"**



**BSPHT20-BSP HOSE TAIL
20MM 3/4"**



**BSPHT25-BSP HOSE TAIL
25MM 1"**



**BSPHT32-BSP HOSE TAIL
32MM 1 1/4"**



**BSPHT40-BSP HOSE TAIL
40MM 1 1/2"**



**BSPHT50-BSP HOSE TAIL
50MM 2"**



**BSPHT65-BSP HOSE TAIL
65MM 2 1/2"**



**BSPHT80-BSP HOSE TAIL
80MM 3"**



**BSPHT101-BSP HOSE TAIL
101MM 4"**

BSPBNN - BSP BARREL NIPPLE 316



**BSPBNN06-BSP BARREL
NIPPLE 06MM 1/8"**



**BSPBNN08-BSP BARREL
NIPPLE 08MM 1/4"**



**BSPBNN10-BSP BARREL
NIPPLE 10MM 3/8"**



**BSPBNN15-BSP BARREL
NIPPLE 15MM 1/2"**



**BSPBNN20-BSP BARREL
NIPPLE 20MM 3/4"**



**BSPBNN25-BSP BARREL
NIPPLE 25MM 1"**



**BSPBNN32-BSP BARREL
NIPPLE 32MM 1 1/4"**



**BSPBNN40-BSP BARREL
NIPPLE 40MM 1 1/2"**



**BSPBNN50-BSP BARREL
NIPPLE 50MM 2"**

BSPBN - BSP BACK NUT 316



**BSPBN15-BSPT BACK NUT
15MM**



**BSPBN20-BSPT BACK NUT
20MM**



**BSPTBN-BSPT BACK NUT
25MM**



**BSPBN32-BSPT BACK NUT
32MM**

BSPBN - BSP BACK NUT 316



BSPSQHP - BSP SQUARE HEAD PLUG 316



BSPRB - BSP REDUCING BUSH 316



**BSPRB0806-BSP REDUCING
BUSH 08-06MM 1/4-1/8"**



**BSPRB1006-BSP REDUCING
BUSH 10-06MM 3/8-1/8"**



**BSPRB1008-BSP REDUCING
BUSH 10-08MM 3/8-1/4"**



**BSPRB1506-BSP REDUCING
BUSH 15-06MM 1/2-1/8"**



**BSPRB1508-BSP REDUCING
BUSH 15-08MM 1/2-1/4"**



**BSPRB1510-BSP REDUCING
BUSH 15-10MM 1/2-3/8"**



**BSPRB2008-BSP REDUCING
BUSH 20-08MM 3/4-1/4"**



**BSPRB2010-BSP REDUCING
BUSH 20-10MM 3/4-3/8"**



**BSPRB2015-BSP REDUCING
BUSH 20-15MM 3/4-1/2"**



**BSPRB2508-BSP REDUCING
BUSH 25-08MM 1-1/4"**



**BSPRB2510-BSP REDUCING
BUSH 25-10MM 1-3/8"**



**BSPRB2515-BSP REDUCING
BUSH 25-15MM 1-1/2"**



**BSPRB2520-BSP REDUCING
BUSH 25-20MM 1-3/4"**



**BSPRB3215-BSP REDUCING
BUSH 32-15MM 1 1/4-1/2"**



**BSPRB3220-BSP REDUCING
BUSH 32-20MM 1 1/4-3/4"**



**BSPRB3225-BSP REDUCING
BUSH 32-25MM 1 1/4-1"**

BSPRB - BSP REDUCING BUSH 316



BSPRB4015-BSP REDUCING BUSH 40-15MM 11/2-1/2"



BSPRB4020-BSP REDUCING BUSH 40-20MM 11/2-3/4"



BSPRB4025-BSP REDUCING BUSH 40-25MM 11/2-1"



BSPRB4032-BSP REDUCING BUSH 40-32MM 11/2-11/4"



BSPRB5025-BSP REDUCING BUSH 50-25MM 2-1"



BSPRB5032-BSP REDUCING BUSH 50-32MM 2-11/4"



BSPRB5040-BSP REDUCING BUSH 50-40MM 2-11/2"

BSPRHN - BSP REDUCING HEX NIPPLE 316



BSPRHN1508-BSP REDUCING HEX NIPPLE 15-08MM 1/2-1/4"



BSPRHN1510-BSP REDUCING HEX NIPPLE 15-10MM 1/2-3/8"



BSPRHN2008-BSP REDUCING HEX NIPPLE 20-08MM 3/4-1/4"



BSPRHN2010-BSP REDUCING HEX NIPPLE 20-10MM 3/4-3/8"



BSPRHN2015-BSP REDUCING HEX NIPPLE 20-15MM 3/4-1/2"



BSPRHN2515-BSP REDUCING HEX NIPPLE 25-15MM 1-1/2"



BSPRHN2520-BSP REDUCING HEX NIPPLE 25-20MM 1-3/4"



BSPRHN3215-BSP REDUCING HEX NIPPLE 32-15MM 11/4-1/2"

BSPRHN - BSP REDUCING HEX NIPPLE 316



**BSPRHN3220-BSP
REDUCING HEX NIPPLE
32-20MM 11/4-1"**



**BSPRHN3225-BSP
REDUCING HEX NIPPLE
32-25MM 11/4-1"**



**BSPRHN4015-BSP
REDUCING HEX NIPPLE
40-15MM 11/2-1/2"**



**BSPRHN4020-BSP
REDUCING HEX NIPPLE
40-20MM**



**BSPRHN4025-BSP
REDUCING HEX NIPPLE
40-25MM 11/2-1"**



**BSPRHN4032-BSP
REDUCING HEX NIPPLE
40-32MM**



**BSPRHN5025-BSP
REDUCING HEX NIPPLE
50-25MM 2-1"**



**BSPRHN5032-BSP
REDUCING HEX NIPPLE
50-32MM 2-11/4"**



**BSPRHN5040-BSP
REDUCING HEX NIPPLE
50-40MM 2-11/2"**



**BSPRHN6550-BSP
REDUCING HEX NIPPLE
65MM-50MM**

BSPRS - BSP REDUCING SOCKET 316



**BSPRS1508-BSP REDUCING
SOCKET 15-08MM 1/2-1/4"**



**BSPRS1510-BSP REDUCING
SOCKET 15-10MM 1/2-3/8"**



**BSPRS2008-BSP REDUCING
SOCKET 20-08MM 3/4-1/4**



**BSPRS2015-BSP REDUCING
SOCKET 20-15MM 3/4-1/2"**

BSPRS - BSP REDUCING SOCKET 316



**BSPRS2508-BSP REDUCING
SOCKET 25-08MM 1-1/4"**



**BSPRS2510-BSP REDUCING
SOCKET 25-10MM 1-3/8"**



**BSPRS2515-BSP REDUCING
SOCKET 25-15MM 1-1/2"**



**BSPRS2520-BSP REDUCING
SOCKET 25-20MM 1-3/4"**



**BSPRS3225-BSP REDUCING
SOCKET 32-25MM 1 1/4"**



**BSPRS4020-BSP REDUCING
SOCKET 40-20MM
1 1/2-3/4"**



**BSPRS4025-BSP REDUCING
SOCKET 40-25MM 1 1/2-1"**



**BSPRS4032-BSP REDUCING
SOCKET 40-32MM
1 1/2-1 1/4"**



**BSPRS5025-BSP REDUCING
SOCKET 50-25MM 2-1"**



**BSPRS5032-BSP REDUCING
SOCKET 50-32MM 2-1 1/4"**



**BSPRS5040-BSP REDUCING
SOCKET 50-40MM 2-1 1/2"**

BSPC - BSP CROSS 316



**BSPC06- BSP CROSS 6MM
1/8"**



**BSPC08- BSP CROSS 8MM
1/4"**



**BSPC10- BSP CROSS 10MM
3/8"**



**BSPC15- BSP CROSS 15MM
1/2"**

BSPC - BSP CROSS 316



**BSPC20-BSP CROSS 20MM
3/4"**



**BSPC25-BSP CROSS 25MM
1"**



**BSPC32-BSP CROSS 32MM
1"1/4**



**BSPC40-BSP CROSS 40MM
1"1/2**



**BSPC50-BSP CROSS 50MM
2"**

BSPFRT - BSP FULL RUNNING THREAD 316



**BSPFRT08-BSP FULL
RUNNING THREAD 8MM
1/4" L=18MM**



**BSPFRT10-BSP FULL
RUNNING THREAD 10MM
3/8" L=22MM**



**BSPFRT15-BSP FULL
RUNNING THREAD 15MM
1/2" L=25MM**



**BSPFRT20- BSP FULL
RUNNING THREAD 20MM
3/4" L=30MM**



**BSPFRT25-BSP FULL
RUNNING THREAD 25MM
1" L=35MM**



**BSPFRT32-BSP FULL
RUNNING THREAD 32MM
1"1/4 L= 38MM**



**BSPFRT40-BSP FULL
RUNNING THREAD 40MM
1"1.2 L= 38MM**



**BSPFRT50- BSP FULL
RUNNING THREAD 50MM
2" L=45MM**

BSPFRT - BSP FULL RUNNING THREAD 316



**BSPFRT65- BSP FULL
RUNNING THREAD 65MM
2"1/2 L= 55MM**

BSPRC - BSP ROUND CAP 316



**BSPRC06- BSP ROUND CAP
6MM 1/8"**



**BSPRC08-BSP ROUND CAP
08MM 1/4"**



**BSPRC10-BSP ROUND CAP
10MM 3/8"**



**BSPRC15-BSP ROUND CAP
15MM 1/2"**



**BSPRC20-BSP ROUND CAP
20MM 3/4"**



**BSPRC25-BSP ROUND CAP
25MM 1"**



**BSPRC32-BSP ROUND CAP
32MM 1 1/4"**



**BSPRC40-BSP ROUND CAP
40MM 1 1/2"**



**BSPRC50-BSP ROUND CAP
50MM 2"**

BSPNPTHN - BSP TO NPT HEX NIPPLE 316



**BSPNPTHN15-BSP TO NPT
THREAD HEX NIPPLE 15MM**



**BSPNPTHN20-BSP TO NPT
THREAD HEX NIPPLE 20MM**



**BSPNPTHN25-BSP TO NPT
THREAD HEX NIPPLE 25MM**



**BSPNPTHN40-BSP TO NPT
THREAD HEX NIPPLE 40MM**



**BSPNPTHN50-BSP TO NPT
THREAD HEX NIPPLE 50MM**



**BSPNPTHN65-BSP TO NPT
THREAD HEX NIPPLE 65MM**



**BSPNPTHN80-BSP TO NPT
THREAD HEX NIPPLE 80MM**



**BSPNPTHN101-BSP TO NPT
THREAD HEX NIPPLE
101MM**

BSPNPTS - BSP TO NPT SOCKET 316



**BSPNPTS15-BSP TO NPT
THREAD SOCKET 15MM**



**BSPNPTS20-BSP TO NPT
THREAD SOCKET 20MM**



**BSPNPTS25-BSP TO NPT
THREAD SOCKET 25MM**



**BSPNPTS32-BSP TO NPT
THREAD SOCKET 32MM**



**BSPNPTS40-BSP TO NPT
THREAD SOCKET 40MM**



**BSPNPTS50-BSP TO NPT
THREAD SOCKET 50MM**



**BSPNPTS65-BSP TO NPT
THREAD SOCKET 65MM**



**BSPNPTS80-BSP TO NPT
THREAD SOCKET 80MM**

BSPNPTS - BSP TO NPT SOCKET 316



**BSPNPTS101-BSP TO NPT
THREAD SOCKET 101MM**

WN - WELD NIPPLE 316



**WN06-WELD NIPPLE 06MM
316**



**WN08-WELD NIPPLE 08MM
316**



**WN10-WELD NIPPLE 10MM
316**



**WN15-WELD NIPPLE 15MM
316**



**WN20-WELD NIPPLE 20MM
316**



**WN25-WELD NIPPLE 25MM
316**



**WN32-WELD NIPPLE 32MM
316**



**WN38-WELD NIPPLE 38MM
316**



**WN50-WELD NIPPLE 50MM
316**



**WN63-WELD NIPPLE 63MM
316**



**WN76-WELD NIPPLE 76MM
316**



**WN101-WELD NIPPLE
101MM 316**

WNR - WELD NIPPLE REDUCER TO TUBE



**WNR15-WELD REDUCING
NIPPLE 15MM**



**WNR20-WELD REDUCING
NIPPLE 20MM**



**WNR25-WELD REDUCING
NIPPLE 25MM**



**WNR32-WELD REDUCING
NIPPLE 32MM**



**WNR38-WELD REDUCING
NIPPLE 38MM**



**WNR50-WELD REDUCING
NIPPLE 50MM**



**WNR63-WELD REDUCING
NIPPLE 63MM**



**WNR76-WELD REDUCING
NIPPLE 76MM**



**WNR101-WELD REDUCING
NIPPLE 101MM**



**WNRNPT76-WELD NIPPLE
REDUCER 76MM NPT**



**WNRNPT101-WELD NIPPLE
REDUCER 101MM NPT**

WNRS - WELD NIPPLE REDUCER TO TUBE SOCKET



**WNRS15-WELD NIPPLE
REDUCER SOCKET 15MM**



**WNRS20-WELD NIPPLE
REDUCER SOCKET 20MM**



**WNRS25-WELD NIPPLE
REDUCER SOCKET 25MM**



**WNRS32-WELD NIPPLE
REDUCER SOCKET 32MM**

WNRS - WELD NIPPLE REDUCER TO TUBE SOCKET



**WNRS40-WELD NIPPLE
REDUCER SOCKET 40MM**



**WNRS50-WELD NIPPLE
REDUCER SOCKET 50MM**



**WNRS63-WELD NIPPLE
REDUCER SOCKET 63MM**



**WNRS76-WELD NIPPLE
REDUCER SOCKET 76MM**



**WNRS101-WELD NIPPLE
REDUCER SOCKET 101MM**

ISSVCV - INNOX STAINLESS STEEL VERTICAL CHECK VALVE



**ISSVCV08-INNOX STAINLESS
STEEL VERTICAL CHECK
VALVE 08MM**



**ISSVCV10-INNOX STAINLESS
STEEL VERTICAL CHECK
VALVE 10MM**



**ISSVCV20-INNOX STAINLESS
STEEL VERTICAL CHECK
VALVE 20MM**



**ISSVCV25-INNOX STAINLESS
STEEL VERTICAL CHECK
VALVE 25MM**



**ISSVCV32-INNOX STAINLESS
STEEL VERTICAL CHECK
VALVE 32MM**



**ISSVCV40-INNOX STAINLESS
STEEL VERTICAL CHECK
VALVE 40MM**



**ISSVCV50-INNOX STAINLESS
STEEL VERTICAL CHECK
VALVE 50MM**



**ISSVCV65-INNOX STAINLESS
STEEL VERTICAL CHECK
VALVE 65MM**

ISSVCV - INNOX STAINLESS STEEL VERTICAL CHECK VALVE



**ISSVCV80-INNOX STAINLESS
STEEL VERTICAL CHECK
VALVE 80MM**

ISSSCV - INNOX STAINLESS STEEL SWING CHECK VALVE



**ISSSCV15-INNOX STAINLESS
STEEL SWING CHECK VALVE
15MM 1/2"**



**ISSSCV20-INNOX STAINLESS
STEEL SWING CHECK VALVE
20MM 3/4"**



**ISSSCV25-INNOX STAINLESS
STEEL SWING CHECK VALVE
25MM 1"**



**ISSSCV32-INNOX STAINLESS
STEEL SWING CHECK VALVE
32MM 1 1/4"**



**ISSSCV40-INNOX STAINLESS
STEEL SWING CHECK VALVE
40MM 1 1/2"**



**ISSSCV50-INNOX STAINLESS
STEEL SWING CHECK VALVE
50MM 2"**



**ISSSCV65-INNOX STAINLESS
STEEL SWING CHECK VALVE
65MM 2 1/2"**



**ISSSCV80-INNOX STAINLESS
STEEL SWING CHECK VALVE
80MM 3"**

2PBV - 2 PIECE BALL VALVE



**2PBV08-2 PIECE BALL VALVE
08MM**



**2PBV10-2 PIECE BALL VALVE
10MM**



**2PBV15-2 PIECE BALL VALVE
15MM**



**2PBV20-2 PIECE BALL VALVE
20MM**

2PBV - 2 PIECE BALL VALVE



2PBVSK - 2 PIECE BALL VALVE SEAL KIT



2PBVSK - 2 PIECE BALL VALVE SEAL KIT



2PBVSK65-2 PIECE BALL VALVE SEAL KIT 65MM



2PBVSK80-2 PIECE BALL VALVE SEAL KIT 80MM

MBV - MOTORIZED BALL VALVE



**MBV25SSCR01-CWX 25MM
CR01 WITH MANUAL
OVERRIDE 2 WIRE REVERSE
POLARITY**



**MBV25SSCR02-CWX 25MM
CR02 WITH MANUAL
OVERRIDE 3 WIRE 2 POINT
CONTROL**



**MBV25SSCR04-CWX 25MM
CR04 WITH MANUAL
OVERRIDE POWER ON OPEN
POWER OFF CLOSE**

3PBV - 3 PIECE BALL VALVE



**3PBV15-3 PIECE BALL VALVE
15MM**



**3PBV20-3 PIECE BALL VALVE
20MM**

3WBVTP - 3 WAY BALL VALVE T PORT



3WBVTP20-3 WAY BALL VALVE T PORT 20MM



3WBVTP25-3 WAY BALL VALVE T PORT 25MM



3WBVTP32-3 WAY BALL VALVE T PORT 32MM



3WBVTP40-3 WAY BALL VALVE T PORT 40MM

3WBVTP - 3 WAY BALL VALVE T PORT



3WBVTP50-3 WAY BALL VALVE T PORT 50MM

IMBV - INNOX MINI BALL VALVE (BLUE HANDLE)



IMBVFF14-INNOX MINI BALL VALVE 1/4"



IMBVFF38-INNOX MINI BALL VALVE 3/8"



IMBVMF14-INNOX MINI BALL VALVE 1/4"



IMBVMF38-INNOX MINI BALL VALVE 3/8"



IMBVMM14-INNOX MINI BALL VALVE 1/4"



IMBVMM38-INNOX MINI BALL VALVE 3/8"

ISSMBV - INNOX STAINLESS STEEL MINI BALL VALVE



ISSMBVFF14-INNOX STAINLESS STEEL MINI BALL VALVE 1/4 8MM



ISSMBVFF38-INNOX STAINLESS STEEL MINI BALL VALVE 3/8 10MM



ISSMBVMF14-INNOX STAINLESS STEEL MINI BALL VALVE 1/4 8MM



ISSMBVMF38-INNOX STAINLESS STEEL MINI BALL VALVE 3/8 10MM

ISSMBV - INNOX STAINLESS STEEL MINI BALL VALVE



**ISSMBVMM38-INNOX
STAINLESS STEEL MINI BALL
VALVE 3/8 10MM**



**ISSMBVMM14-INNOX
STAINLESS STEEL MINI BALL
VALVE 1/4 8MM**

BVLH - 2 PIECE BALL VALVE LOCKING HANDLE



**BVLH20-BALL VALVE
LOCKING HANDLE 20MM**



**BVLH25-BALL VALVE
LOCKING HANDLE 25MM**



**BVLH32-BALL VALVE
LOCKING HANDLE 32MM**



**BVLH40-BALL VALVE
LOCKING HANDLE 40MM**



**BVLH50-BALL VALVE
LOCKING HANDLE 50MM**

HDHC - HEAVY DUTY HOSE CLAMP



**HDHC1719-HEAVY DUTY
HOSE CLAMP 17/19MM**



**HDHC2022-HEAVY DUTY
HOSE CLAMP 20/22MM**



**HDHC2325-HEAVY DUTY
HOSE CLAMP 23/25MM**



**HDHC2628-HEAVY DUTY
HOSE CLAMP 26/28MM**

HDHC - HEAVY DUTY HOSE CLAMP



**HDHC2931-HEAVY DUTY
HOSE CLAMP 29/31MM**



**HDHC3235-HEAVY DUTY
HOSE CLAMP 32/35MM**



**HDHC3639-HEAVY DUTY
HOSE CLAMP 36/39MM**



**HDHC4043-HEAVY DUTY
HOSE CLAMP 40/43MM**



**HDHC4447-HEAVY DUTY
HOSE CLAMP 44/47MM**



**HDHC4851-HEAVY DUTY
HOSE CLAMP 48/51MM**



**HDHC5255-HEAVY DUTY
HOSE CLAMP 52/55MM**



**HDHC5659-HEAVY DUTY
HOSE CLAMP 56/59MM**



**HDHC6063-HEAVY DUTY
HOSE CLAMP 60/63MM**



**HDHC6467-HEAVY DUTY
HOSE CLAMP 64/67MM**



**HDHC6873-HEAVY DUTY
HOSE CLAMP 68/73MM**



**HDHC7479-HEAVY DUTY
HOSE CLAMP 74/79MM**



**HDHC8085-HEAVY DUTY
HOSE CLAMP 80/85MM**



**HDHC8691-HEAVY DUTY
HOSE CLAMP 86/91MM**



**HDHC9297-HEAVY DUTY
HOSE CLAMP 92/97MM**



**HDHC98103-HEAVY DUTY
HOSE CLAMP 98/103MM**

HDHC - HEAVY DUTY HOSE CLAMP



**HDHC104112-HEAVEY DUTY
HOSE CLAMP 104/112MM**



**HDHC113121-HEAVEY DUTY
HOSE CLAMP 113/121MM**

SHC - STANDARD HOSE CLAMP SS304



**SHC0812-STANDARD HOSE
CLAMP 08/12MM**



**SHC812 - STANDARD HOSE
CLAMP 8/12MM**



**SHC1016-STANDARD HOSE
CLAMP 10/16MM**



**SHC1220-STANDARD HOSE
CLAMP 12/20MM**



**SHC1625-STANDARD HOSE
CLAMP 16/25MM**



**SHC1832-STANDARD HOSE
CLAMP 18/32MM**



**SHC2751-STANDARD HOSE
CLAMP 27/51MM**



**SHC4063-STANDARD HOSE
CLAMP 40/63MM**



**SHC7295-STANDARD HOSE
CLAMP 72/95MM**



**SHC91114-STANDARD HOSE
CLAMP 91/114MM**

IFAG - INNOX FLANGE AND GASKET



IFAG25-INNOX FLANGE AND GASKET 25MM



IFAG32-INNOX FLANGE AND GASKET 32MM



IFAG38-INNOX FLANGE AND GASKET 38MM

IITC - INNOX INTERNAL TUBE CLEANER



IITC-INNOX INTERNAL TUBE CLEANER 38MM



IITC-INNOX INTERNAL TUBE CLEANER 50MM



IITC-INNOX INTERNAL TUBE CLEANER 63MM



IITC76-INNOX INTERNAL TUBE CLEANER 76MM



IITC-INNOX INTERNAL TUBE CLEANER 101MM

IPP - INNOX PERISTALTIC PUMP (800ML PER MIN)



IPP800B-INNOX PERISTALTIC PUMP 800 M/L 24VDC BLUE



IPP800C-INNOX PERISTALTIC PUMP 800 M/L 24VDC CLEAR




IPP800R-INNOX PERISTALTIC PUMP 800 M/L 24VDC RED



IPPE800B-INNOX PERISTALTIC PUMP 800 M/L 24VDC BLUE COMPLETE WITH ENCLOSURE

IPP - INNOX PERISTALTIC PUMP (800ML PER MIN)



**IPPE800C-INNOX
PERISTALTIC PUMP 800 M/L
24VDC CLEAR COMPLETE
WITH ENCLOSURE**




**IPPE800R-INNOX
PERISTALTIC PUMP 800 M/L
24VDC RED COMPLETE
WITH ENCLOSURE**



**IPPHB-INNOX PERISTALTIC
PUMP 800 M/L
REPLACEMENT HEAD BLUE**



**IPPHC-INNOX PERISTALTIC
PUMP 800 M/L
REPLACEMENT HEAD
CLEAR**



**IPPHR-INNOX PERISTALTIC
PUMP 800 M/L
REPLACEMENT HEAD RED**



**IBHHT08-INNOX BULKHEAD
HOSETAIL 8MM**



**GBBF6-GB BARB FILTER
6MM**



**GBBF8-GB BARB FILTER
8MM**



**GBBF10-GB BARB FILTER
10MM**



**GBBF12-GB BARB FILTER
12MM**



**GBBF20-GB BARB FILTER
20MM**



**GBCD3P-GB CHEMICAL
DISPENSER THREE PUMPS
IN STAINLESS STEEL
ENCLOSURE**

ISSBE - INNOX STAINLESS STEEL BARB ELBOW 90 DEGREE



**ISSBE9006-INNOX
STAINLESS STEEL BARB
ELBOW 90 DEGREE 06MM**



**ISSBE9008-INNOX
STAINLESS STEEL BARB
ELBOW 90 DEGREE 08MM**



**ISSBE9010-INNOX
STAINLESS STEEL BARB
ELBOW 90 DEGREE 10MM**



**ISSBE9012-INNOX
STAINLESS STEEL BARB
ELBOW 90 DEGREE 12MM**

ISSBE - INNOX STAINLESS STEEL BARB ELBOW 90 DEGREE



**ISSBE9016-INNOX
STAINLESS STEEL BARB
ELBOW 90 DEGREE 16MM**

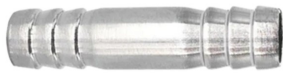


**ISSBE9020-INNOX
STAINLESS STEEL BARB
ELBOW 90 DEGREE 20MM**



**ISSBE9025-INNOX
STAINLESS STEEL BARB
ELBOW 90 DEGREE 25MM**

ISSBES - INNOX STAINLESS STEEL EQUAL STRAIGHT



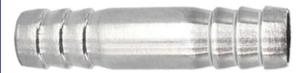
**ISSBES06-INNOX STAINLESS
STEEL BARB EQUAL
STRAIGHT 06MM**



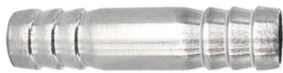
**ISSBES08-INNOX STAINLESS
STEEL BARB EQUAL
STRAIGHT 08MM**



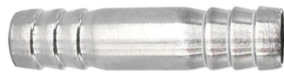
**ISSBES10-INNOX STAINLESS
STEEL BARB EQUAL
STRAIGHT 10MM**



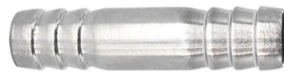
**ISSBES12-INNOX STAINLESS
STEEL BARB EQUAL
STRAIGHT 12MM**



**ISSBES16-INNOX STAINLESS
STEEL BARB EQUAL
STRAIGHT 16MM**



**ISSBES20-INNOX STAINLESS
STEEL BARB EQUAL
STRAIGHT 20MM**

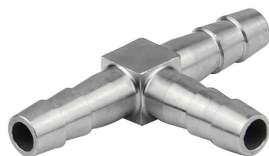


**ISSBES25-INNOX STAINLESS
STEEL BARB EQUAL
STRAIGHT 25MM**

ISSBET - INNOX STAINLESS STEEL BARB EQUAL TEE



**ISSBET06-INNOX STAINLESS
STEEL BARB EQUAL TEE
06MM**



**ISSBET08-INNOX STAINLESS
STEEL BARB EQUAL TEE
08MM**

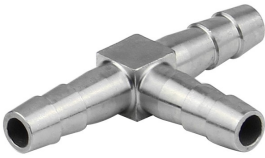


**ISSBET10-INNOX STAINLESS
STEEL BARB EQUAL TEE
10MM**



**ISSBET12-INNOX STAINLESS
STEEL BARB EQUAL TEE
12MM**

ISSBET - INNOX STAINLESS STEEL BARB EQUAL TEE



**ISSBET16-INNOX STAINLESS
STEEL BARB EQUAL TEE
16MM**



**ISSBET20-INNOX STAINLESS
STEEL BARB EQUAL TEE
20MM**



**ISSBET25-INNOX STAINLESS
STEEL BARB EQUAL TEE
25MM**

ISSBRS - INNOX STAINLESS STEEL BARB REDUCING STRAIGHT



**ISSBRS0610-INNOX
STAINLESS STEEL BARB
REDUCING STRAIGHT
0610MM**



**ISSBRS0810-INNOX
STAINLESS STEEL BARB
REDUCING STRAIGHT
0810MM**



**ISSBRS1012-INNOX
STAINLESS STEEL BARB
REDUCING STRAIGHT
1012MM**



**ISSBRS1016-INNOX
STAINLESS STEEL BARB
REDUCING STRAIGHT
1016MM**



**ISSBRS1216-INNOX
STAINLESS STEEL BARB
REDUCING STRAIGHT
1216MM**



**ISSBRS 1620-INNOX
STAINLESS STEEL BARB
REDUCING STRAIGHT
1620MM**



**ISSBRS 1625-INNOX
STAINLESS STEEL BARB
REDUCING STRAIGHT
1625MM**



**ISSBRS 2025-INNOX
STAINLESS STEEL BARB
REDUCING STRAIGHT
2025MM**



**ISSBRS0608-INNOX
STAINLESS STEEL BARB
REDUCING STRAIGHT
0608MM**

ISSBY - INNOX STAINLESS STEEL BARB Y



ISSBY06 -INNOX STAINLESS STEEL BARB Y 06MM



ISSBY08-INNOX STAINLESS STEEL BARB Y 08MM



ISSBY10-INNOX STAINLESS STEEL BARB Y 10MM



ISSBY12-INNOX STAINLESS STEEL BARB Y 12MM



ISSBY16-INNOX STAINLESS STEEL BARB Y 16MM

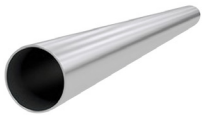


ISSBY20-INNOX STAINLESS STEEL BARB Y 20MM

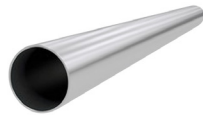


ISSBY25- INNOX STAINLESS STEEL BARB Y 25MM

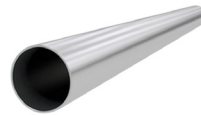
ISST - INNOX STAINLESS STEEL TUBE (PICK UP OR LOCAL DELIVERY ONLY FROM MORRINSVILLE)



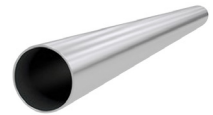
ISST0.995-STAINLESS STEEL TUBE 304 0.9MM 9.5MM



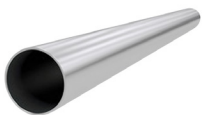
ISST1.212-INNOX STAINLESS STEEL TUBE 12.7MM 1.2 5.8m



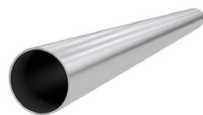
ISST1.216-INNOX STAINLESS STEEL TUBE 15.8MM 1.2 5.8M



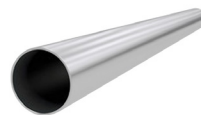
ISST1.220-INNOX STAINLESS STEEL TUBE 19.1MM 1.2 5.8M



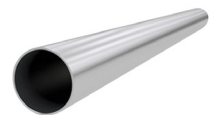
ISST1.225-INNOX STAINLESS STEEL TUBE 25.4MM 1.2 5.8M



ISST1.232-INNOX STAINLESS STEEL TUBE 1.2 31.80MM 5.8M

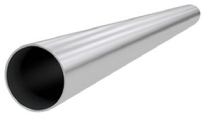


ISST1.238-INNOX STAINLESS STEEL TUBE 1.2 38.1MM 5.8M

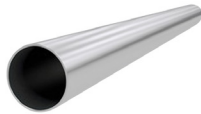


ISST1.250-INNOX STAINLESS STEEL TUBE 1.2 50.8MM 5.8M

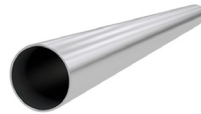
ISST - INNOX STAINLESS STEEL TUBE (PICK UP OR LOCAL DELIVERY ONLY FROM MORRINSVILLE)



**ISST1.663-INNOX STAINLESS
STEEL TUBE 1.6 63.5MM
5.8M**



**ISST761.2-INNOX STAINLESS
STEEL TUBE 76.2MM 1.6
5.8M**



**ISST2.0101-INNOX
STAINLESS STEEL TUBE
101MM 2.0MM 5.8M**

IWGRH - INNOX WATER GLAND RIGHT HAND



**IWGRHDO20-INNOX WATER
GLAND RIGHT HAND
THREAD DUAL OUTLET
20MM**



**IWGRHDO25-INNOX WATER
GLAND RIGHT HAND
THREAD DUAL OUTLET
25MM**



**IWGRHDO32-INNOX WATER
GLAND RIGHT HAND
THREAD DUAL OUTLET
32MM**



**IWGRHDO40-INNOX WATER
GLAND RIGHT HAND
THREAD DUAL OUTLET
40MM**



**IWGRHRA20-INNOX WATER
GLAND RIGHT HAND
THREAD RIGHT ANGLE
20MM**



**IWGRHRA25-INNOX WATER
GLAND RIGHT HAND
THREAD RIGHT ANGLE
25MM**



**IWGRHRA32-INNOX WATER
GLAND RIGHT HAND
THREAD RIGHT ANGLE
32MM**



**IWGRHRA40-INNOX WATER
GLAND RIGHT HAND
THREAD RIGHT ANGLE
40MM**



**IWGRHS20-INNOX WATER
GLAND RIGHT HAND
THREAD STRAIGHT PORT
20MM**



**IWGRHSP25-INNOX WATER
GLAND RIGHT HAND
THREAD STRAIGHT PORT
25MM**



**IWGRHS32-INNOX WATER
GLAND RIGHT HAND
THREAD STRAIGHT PORT
32MM**



**IWGRHS40-INNOX WATER
GLAND RIGHT HAND
THREAD STRAIGHT PORT
40MM**

IWGRH - INNOX WATER GLAND RIGHT HAND



**ISSWGS32-INNOX
STAINLESS STEEL WATER
GLAND STRAIGHT M/F
32MM**



**ISSWGS40-INNOX
STAINLESS STEEL WATER
GLAND STRAIGHT M/F
40MM**

ISJ - INNOX SWIVEL JOINT



**ISJ15-INNOX SWIVEL JOINT
15MM**



**ISH15-INNOX SHOWER
HEAD 15MM FEMALE**



**ISH15L-INNOX SHOWER
HEAD 15MM FEMALE
LARGE 7 MODES**

KQB2R - PNEUMATIC REDUCER



**KQB2R0604- PNEUMATIC
REDUCER 06-04**



**KQB2R0608- PNEUMATIC
REDUCER 06-08**



**KQB2R0610- PNEUMATIC
REDUCER 06-10**



**KQB2R0612- PNEUMATIC
REDUCER 06-12**



**KQB2R0810- PNEUMATIC
REDUCER 08-10**



**KQB2R0812- PNEUMATIC
REDUCER 08-12**



**KQB2R1012- PNEUMATIC
REDUCER 10-12**

PB - BSP MALE THREAD TO TUBE TEE



**PB0601-1/8" BSP MALE
THREAD TO TUBE TEE 6MM**



**PB0602-1/4" BSP MALE
THREAD TO TUBE TEE 6MM**



**PB0603-3/8" BSP MALE
THREAD TO TUBE TEE 6MM**



**PB0801-1/8" BSP MALE
THREAD TO TUBE TEE 8MM**



**PB0802-1/4" BSP MALE
THREAD TO TUBE TEE 8MM**



**PB0803-3/8" BSP MALE
THREAD TO TUBE TEE 8MM**



**PB1001-1/8" BSP MALE
THREAD TO TUBE TEE
10MM**



**PB1002-1/4" BSP MALE
THREAD TO TUBE TEE
10MM**



**PB1003-3/8" BSP MALE
THREAD TO TUBE TEE
10MM**



**PB1201-1/8" BSP MALE
THREAD TO TUBE TEE
12MM**



**PB1202-1/4" BSP MALE
THREAD TO TUBE TEE
12MM**



**PB1203-3/8" BSP MALE
THREAD TO TUBE TEE
12MM**

PBAE - BRASS AIR EXHAUST



**PBAE01-1/8" BRASS AIR
EXHAUST**



**PBAE02-1/4" BRASS AIR
EXHAUST**



**PBAE03-3/8" BRASS AIR
EXHAUST**

PBAEWA - BRASS AIR EXHAUST WITH SPEED ADJUSTER



PBAEWA01-1/8" BRASS AIR EXHAUST WITH SPEED ADJUSTER



PBAEWA02-1/4" BRASS AIR EXHAUST WITH SPEED ADJUSTER



PBAEWA03-3/8" BRASS AIR EXHAUST WITH SPEED ADJUSTER

PBHE - PNEUMATIC BULKHEAD ELBOW



PBHE06-PNEUMATIC BULKHEAD ELBOW 6MM



PBHE08-PNEUMATIC BULKHEAD ELBOW 8MM



PBHE10-PNEUMATIC BULKHEAD ELBOW 10MM



PBHE12-PNEUMATIC BULKHEAD ELBOW 12MM

PBHS - PNEUMATIC BULKHEAD STRAIGHT FITTING



PBHS06-PNEUMATIC BULKHEAD STRAIGHT FITTING 6MM



PBHS08-PNEUMATIC BULKHEAD STRAIGHT FITTING 8MM



PBHS10-PNEUMATIC BULKHEAD STRAIGHT FITTING 10MM



PBHS12-PNEUMATIC BULKHEAD STRAIGHT FITTING 12MM

PC - MALE THREAD TO TUBE



PC0601-1/8" BSP MALE THREAD TO 6MM TUBE



PC0602-1/4" BSP MALE THREAD TO 6MM TUBE



PC0603-3/8" BSP MALE THREAD TO 6MM TUBE



PC0801-1/8" BSP MALE THREAD TO 8MM TUBE

PC - MALE THREAD TO TUBE



**PC0802-1/4\"BSP MALE
THREAD TO 8MM TUBE**



**PC0803-3/8\"BSP MALE
THREAD TO 8MM TUBE**



**PC1001-1/8\"BSP MALE
THREAD TO 10MM TUBE**



**PC1002-1/4\"BSP MALE
THREAD TO 10MM TUBE**



**PC1003-3/8\"BSP MALE
THREAD TO 10MM TUBE**



**PC1201-1/8\"BSP MALE
THREAD TO 12MM TUBE**



**PC1202-1/4\"BSP MALE
THREAD TO 12MM TUBE**



**PC1203-3/8\"BSP MALE
THREAD TO 12MM TUBE**

PCF - FEMALE THREAD TO TUBE



**PCF0802-PNEUMATIC
FEMALE CONNECTOR 8MM
1/4**



**PCF1002-PNEUMATIC
STRAIGHT FEMALE 10MM
TO 1/4 BSP**

PE - PNEUMATIC EQUAL TEE TUBE



**PE06-6MM TUBE EQUAL
TEE**



**PE08-8MM TUBE EQUAL
TEE**



**PE10-10MM TUBE EQUAL
TEE**



**PE12-12MM TUBE EQUAL
TEE**

PEC - PNEUMATIC BRASS PLUG



**PEC01-1/8 PNEUMATIC
BRASS PLUG 6MM**



**PEC02-1/4 PNEUMATIC
BRASS PLUG 8MM**



**PEC03-3/8 PNEUMATIC
BRASS PLUG 10MM**



**PEC04-1/2 PNEUMATIC
BRASS PLUG 15MM**

PEG - PNEUMATIC REDUCING TEE TUBE



**PEG868-PNEUMATIC
REDUCING TEE 8-6-8M**



**PEG10610-PNEUMATIC
REDUCING TEE 10-6-10M**



**PEG100810-PNEUMATIC
REDUCING TEE 10-8-10M**



**PEG12612- PNEUMATIC
REDUCING TEE 12-6-12M**



**PEG12812- PNEUMATIC
REDUCING TEE 12-8-12M**



**PEG121012- PNEUMATIC
REDUCING TEE 12-10-12M**

PH - MALE THREAD SWIVEL 90 DEGREE ELBOW TO TUBE



**PH0601-1/8" BSP MALE
THREAD SWIVEL 90 DEGREE
ELBOW TO TUBE 6MM**



**PH0602-1/4" BSP MALE
THREAD SWIVEL 90 DEGREE
ELBOW TO TUBE 6MM**



**PH0603-3/8" BSP MALE
THREAD SWIVEL 90 DEGREE
ELBOW TO TUBE 6MM**



**PH0801-1/8" BSP MALE
THREAD SWIVEL 90 DEGREE
ELBOW TO TUBE 8MM**

PH - MALE THREAD SWIVEL 90 DEGREE ELBOW TO TUBE



**PH0802 -1/4" BSP MALE
THREAD SWIVEL 90 DEGREE
ELBOW TO TUBE 8MM**



**PH0803-3/8" BSP MALE
THREAD SWIVEL 90 DEGREE
ELBOW TO TUBE 8MM**



**PH1001-1/8" BSP MALE
THREAD SWIVEL 90 DEGREE
ELBOW TO TUBE 10MM**



**PH1002-1/4" BSP MALE
THREAD SWIVEL 90 DEGREE
ELBOW TO TUBE 10MM**



**PH1003-3/8" BSP MALE
THREAD SWIVEL 90 DEGREE
ELBOW TO TUBE 10MM**



**PH1201-1/8" BSP MALE
THREAD SWIVEL 90 DEGREE
ELBOW TO TUBE 12MM**



**PH1202-1/4" BSP MALE
THREAD SWIVEL 90 DEGREE
ELBOW TO TUBE 12MM**



**PH1203-3/8" BSP MALE
THREAD SWIVEL 90 DEGREE
ELBOW TO TUBE 12MM**

PK - PNEUMATIC 5 PORT MANIFOLD



**PK06-6MM TUBE 5 PORT
MANIFOLD**



**PK08-8MM TUBE 5 PORT
MANIFOLD**



**PK10-10MM TUBE 5 PORT
MANIFOLD**



**PK12-12MM TUBE 5 PORT
MANIFOLD**

PL - PNEUMATIC BSP MALE THREAD 90 DEGREE ELBOW TO TUBE



**PL0601-1/8" BSP MALE
THREAD 90 DEGREE ELBOW
TO 6MM TUBE**



**PL0602-1/4" BSP MALE
THREAD 90 DEGREE ELBOW
TO 6MM TUBE**



**PL0603-3/8" BSP MALE
THREAD 90 DEGREE ELBOW
TO 6MM TUBE**



**PL0801-1/8" BSP MALE
THREAD 90 DEGREE ELBOW
TO 8MM TUBE**

PL - PNEUMATIC BSP MALE THREAD 90 DEGREE ELBOW TO TUBE



**PL0802-1/4" BSP MALE
THREAD 90 DEGREE ELBOW
TO 8MM TUBE**



**PL0803-3/8" BSP MALE
THREAD 90 DEGREE ELBOW
TO 8MM TUBE**



**PL1001-1/8" BSP MALE
THREAD 90 DEGREE ELBOW
TO 10MM TUBE**



**PL1002-1/4" BSP MALE
THREAD 90 DEGREE ELBOW
TO 10MM TUBE**



**PL1003-3/8" BSP MALE
THREAD 90 DEGREE ELBOW
TO 10MM TUBE**



**PL1201-1/8" BSP MALE
THREAD 90 DEGREE ELBOW
TO 12MM TUBE**



**PL1202-1/4" BSP MALE
THREAD 90 DEGREE ELBOW
TO 12MM TUBE**



**PL1203-3/8" BSP MALE
THREAD 90 DEGREE ELBOW
TO 12MM TUBE**

PLNRV - PNEUMATIC NON RETURN VALVE



**PLNRV06-PLASTIC NON
RETURN VALVE 6M**



**PLNRV08-PLASTIC NON
RETURN VALVE 8M**



**PLNRV10- PLASTIC NON
RETURN VALVE 10M**



**PLNRV12- PLASTIC NON
RETURN VALVE 12M**

PP - PNEUMATIC PUSH LOCK FITTING BLANK



**PP06-PUSH LOCK FITTING
BLANK 6MM**



**PP08-PUSH LOCK FITTING
BLANK 8MM**



**PP10-PUSH LOCK FITTING
BLANK 10MM**



**PP12-PUSH LOCK FITTING
BLANK 12MM**

PPC - PNEUMATIC PIN CYLINDER



PPC CJPB15-20-PNEUMATIC
PIN CYLINDER 15-20MM

SL - BSP MALE THREAD SWIVEL 90 DEGREE WITH SPEED ADJUSTER TO TUBE



SL0601-1/8" BSP MALE
THREAD SWIVEL 90 DEGREE
WITH SPEED ADJUSTER TO
TUBE 6MM



SL0602-1/4" BSP MALE
THREAD SWIVEL 90 DEGREE
WITH SPEED ADJUSTER TO
TUBE 6MM



SL0603-3/8" BSP MALE
THREAD SWIVEL 90 DEGREE
WITH SPEED ADJUSTER TO
TUBE 6MM



SL0801-1/8" BSP MALE
THREAD SWIVEL 90 DEGREE
WITH SPEED ADJUSTER TO
TUBE 8MM



SL0802-1/4" BSP MALE
THREAD SWIVEL 90 DEGREE
WITH SPEED ADJUSTER TO
TUBE 8MM



SL0803-3/8" BSP MALE
THREAD SWIVEL 90 DEGREE
WITH SPEED ADJUSTER TO
TUBE 8MM



SL1001-1/8" BSP MALE
THREAD SWIVEL 90 DEGREE
WITH SPEED ADJUSTER TO
TUBE 10MM



SL1002-1/4" BSP MALE
THREAD SWIVEL 90 DEGREE
WITH SPEED ADJUSTER TO
TUBE 10MM



SL1003-3/8" BSP MALE
THREAD SWIVEL 90 DEGREE
WITH SPEED ADJUSTER TO
TUBE 10MM



SL1201-1/8" BSP MALE
THREAD SWIVEL 90 DEGREE
WITH SPEED ADJUSTER TO
TUBE 12MM



SL1202-1/4" BSP MALE
THREAD SWIVEL 90 DEGREE
WITH SPEED ADJUSTER TO
TUBE 12MM



SL1203-3/8" BSP MALE
THREAD SWIVEL 90 DEGREE
WITH SPEED ADJUSTER TO
TUBE 12MM

PSC - PNEUMATIC RAM AND MOUNTING BRACKETS



**PSC80X400 PNEUMATIC
RAM AND MOUNTING
BRACKETS**

PU - PNEUMATIC STRAIGHT CONNECTOR



**PU06-6MM TUBE STRAIGHT
CONNECTOR**



**PU08-8MM TUBE STRAIGHT
CONNECTOR**



**PU10-10MM TUBE
STRAIGHT CONNECTOR**



**PU12-12MM TUBE
STRAIGHT CONNECTOR**

PUG - PNEUMATIC STRAIGHT REDUCER



**PUG0806-8MM-6MM TUBE
STRAIGHT REDUCER**



**PUG1008-10MM-8MM
TUBE STRAIGHT REDUCER**



**PUG1208-12MM-8MM
TUBE STRAIGHT REDUCER**



**PUG1210-12MM-10MM
TUBE STRAIGHT REDUCER**

PV - PNEUMATIC 90 DEGREE ELBOW



**PV06-6MM TUBE 90
DEGREE ELBOW**



**PV08-8MM TUBE 90
DEGREE ELBOW**



**PV10-10MM TUBE 90
DEGREE ELBOW**



**PV12-12MM TUBE 90
DEGREE ELBOW**

PY - PNEUMATIC Y PIECE



PY06-6MM TUBE Y PIECE



PY08-8MM TUBE Y PIECE



PY10-10MM TUBE Y PIECE



PY12-12MM TUBE Y PIECE

HVFF - PNEUMATIC SHUT OFF VALVE



6MM TUBE SHUT OFF VALVE



8MM TUBE SHUT OFF VALVE



10MM TUBE SHUT OFF VALVE



12MM TUBE SHUT OFF VALVE

PPU - PNEUMATIC POLYURETHANE TUBING



PPU06 - POLYURETHANE TUBING 6MM BLUE 200M



PPU625-POLYURETHANE TUBING PER 25 METER 6M BLUE



PPU08 - POLYURETHANE TUBING 8MM BLUE 100M



PPU825- POLYURETHANE TUBING PER 25 METER 8MM BLUE



PPU10 - POLYURETHANE TUBING 10MM BLUE 100M



PPU1025- POLYURETHANE TUBING PER 25 METER 10MM BLUE



PPU12 - POLYURETHANE TUBING 12MM BLUE 100M



PPU1225 - POLYURETHANE TUBING PER 25 METER 12MM BLUE

PE - PNEUMATIC POLYETHYLENE TUBE



**PE64-PNEUMATIC PE TUBE
6MM OD 4MM ID 100M
ROLL**



**PE85 - PNEUMATIC PE TUBE
8MM OD 5MM ID 100M**



**PE8525- Pneumatic PE Tube
8mm OD 5mm ID 25m Roll**



**PE1065 - PNEUMATIC PE
TUBE 10MM OD 6.5MM ID
100M**



**PE128 - PNEUMATIC PE
TUBE 12MM OD 8MM ID
100M**

AC/AR/AF - PNEUMATIC REGULATORS, WATER FILTERS AND OIL FILTERS



**AC2010-02 FILTER
REGULATOR WATER
SEPARATOR**



**AC3010-03 FILTER
REGULATOR WATER
SEPARATOR**



AR2000-02 AIR REGULATOR



AR3000-03 AIR REGULATOR



**AF2000-LIQUID AND DEBRIS
FILTER FOR PNEUMATIC
SYSTEM**

IAARPRV-AIR RELEASE PRESSURE RELIEF



**IAARPRV - INNOX SS304
ADJUSTABLE AIR RELEASE
PRESSURE RELIEF VALVE
1/4" 8MM MAX 130 PSI**

3V 4V - PNEUMATIC ELECTRIC VALVES



**3R210-3PORT 2 WAY
SOLENOID VALVE ONLY
(COIL AS REQUIRED)**



**3V310-3 PORT 2 WAY
SOLENOID VALVE
ONLY(COIL AS REQUIRED)**



**4V210 5 PORT 2 WAY
SOLENOID VALVE ONLY
(COIL AS REQUIRED)**



**4V310 5 PORT 2 WAY
SOLENOID VALVE ONLY
(COIL AS REQUIRED)**

3R - PNEUMATIC PUSH PULL SWITCH



**3R110-06- 3 PORT 2 WAY
PUSH PULL SWITCH 1/8"
BSP**



**3R210-08-3 PORT 2 WAY
PUSH PULL SWITCH 1/4"
BSP**



**3R310-10-3 PORT 2 WAY
PUSH PULL SWITCH 3/8"
BSP**

PVS - PNEUMATIC SOLENOID VALVE COIL



**PVS12DC-Pneumatic
Solenoid Valve 12 DC**



**PVS220AC- Pneumatic
Solenoid Valve 220v AC**



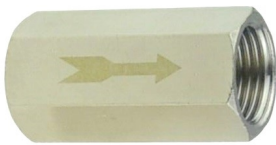
**PVS24DC- Pneumatic
Solenoid Valve 24 DC**

GBHWPSV-GB HOT WATER PLASTIC SOLINOID VALVE 15MM 24V DC 100PSI 85 DEGREE C

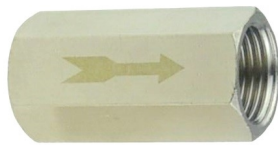


**GBHWPSV15-GB HOT
WATER PLASTIC SOLINOID
VALVE 15MM 24V DC
100PSI 85 DEGREE C**

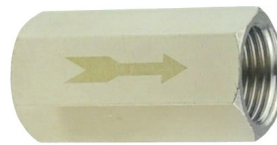
PNRV - PNEUMATIC NON RETURN VALVE



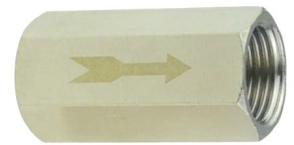
**PNRV06-PNEUMATIC AIR
NON RETURN VALVE 6MM**



**PNRV08-PNEUMATIC AIR
NON RETURN VALVE 8MM**



**PNRV10-PNEUMATIC AIR
NON RETURN VALVE 10MM**



**PNRV15-PNEUMATIC AIR
NON RETURN VALVE 15MM**

NCT - NYLON CABLE TIES



**NCT48150 - NYLON CABLE
TIES 150MM X 4.8MM
(100PKT) UV RESIT**



**NCT48200 - NYLON CABLE
TIES 200MM X 4.8MM
(100PKT) UV RESIT**



**NCT48300 - NYLON CABLE
TIES 300MM X 4.8MM
(100PKT) UV RESIT**



**NCT48370 - NYLON CABLE
TIES 370MM X 4.8MM
(100PKT) UV RESIT**



**NCT48400 - NYLON CABLE
TIES 400MM X 4.8MM
(100PKT) UV RESIT**



**NCT48450 - NYLON CABLE
TIES 450MM X 4.8MM
(100PKT) UV RESIT**



**NCT48500 - NYLON CABLE
TIES 500MM X 4.8MM
(100PKT) UV RESIT**

SSCT - STAINLESS STEEL CABLE TIES



**SSCT46200-STAINLESS STEEL
CABLE TIES 200MM X
4.6MM (100PKT)**



**SSCT46300-STAINLESS STEEL
CABLE TIES 300MM X
4.6MM (100PKT)**



**SSCT46360-STAINLESS STEEL
CABLE TIES 360MM X
4.6MM (100PKT)**



**SSCT46400-STAINLESS STEEL
CABLE TIES 400MM X
4.6MM (100PKT)**



**SSCT46600-STAINLESS STEEL
CABLE TIES 600MM X
4.6MM (100PKT)**



**SSCT46800-STAINLESS STEEL
CABLE TIES 800MM X
4.6MM (100PKT)**



**SSCT461000-STAINLESS
STEEL CABLE TIES 1000MM
X 4.6MM (100PKT)**



**SSCT79350-STAINLESS STEEL
CABLE TIES 350MM X
7.9MM (100PKT)**



**SSCT79400-STAINLESS STEEL
CABLE TIES 400MM X
7.9MM (100PKT)**



**SSCTOOL-STAINLESS STEEL
CABLE TIE TOOL**

GB SLUGWASH CONTROLLER



**SINGLE SLUG WASH 12VLT
CONTROLLER**



**SINGLE SLUG WASH 24VLT
CONTROLLER**



**DUAL SLUGWASH 24VLT
CONTROLLER**

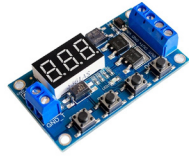


**GBPSMHDR1512- INNOX
POWER SUPPLY 1.25AMP
12V DC (DIN RAIL
TRANSFORMER ONLY)**

GB SLUGWASH CONTROLLER



**GBPSMHDR3024- INNOX
POWER SUPPLY 1.25AMP
24V DC (DIN RAIL
TRANSFORMER ONLY)**



**IXETD008-DC5-36V Dual
MOS LED Digital Time Delay
Relay Trigger Cycle Timer
Delay Switch Circuit Board
Timing Control Module DIY**



GB DINRAIL 200MM



**GBEEL0.53CP-INNOX
ELECTRICAL LEAD 0.5MM 3
CORE WITH PLUG**



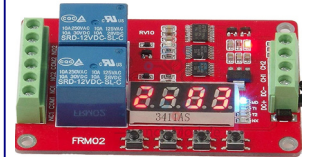
**GBCGP7-BLACK CABLE
GLAND 12.4MM PG7**



**GBDRQC2P-GB DINRAIL
QUICK CONNECTOR 2 POLE**



**GBPE02-ELECTRICAL
PLASTIC ENCLOSURE WITH
SCREWS 200X155X80MM**



**GB2CTDM-2 CHANNEL TIME
DELAY MODULE**

GB POWER SUPPLIES



**GBPS242-INNOX PLUG IN
POWER SUPPLY 24V DC 2
AMP**



**GBPS24012-PLUG 240 VOLT
TO 12 VOLT 2 AMP**



**GBPS12V10A-GB POWER
SUPPLY 12V DC 10 AMP**



**GBPS24V5A-GB POWER
SUPPLY 24V DC 5 AMP**



**GBPS13.8V10A-GB POWER
SUPPLY 13.8V DC 10 AMP**



**GBPS24V10A-GB POWER
SUPPLY 24V DC 10 AMP**



**GBPS24V20A-GB POWER
SUPPLY 24V DC 20 AMP**



**GBPS24V40A-GB POWER
SUPPLY 24V DC 40 AMP**

GBPS - GB POWER SUPPLIES SPARES



**GBPSMHDR1512- INNOX
POWER SUPPLY 1.25AMP
12V DC (DIN RAIL
TRANSFORMER ONLY)**



**GBPSMHDR3012- INNOX
POWER SUPPLY 2.5AMP
12V DC (DIN RAIL
TRANSFORMER ONLY)**



**GBPSMHDR3024- INNOX
POWER SUPPLY 1.25AMP
24V DC (DIN RAIL
TRANSFORMER ONLY)**



**GBHDR10024-HDR 4A 24V
DC DIN RAIL POWER
SUPPLY**



**GBPSMNDR12012- INNOX
POWER SUPPLY 10AMP 12V
DC (DIN RAIL
TRANSFORMER ONLY)**



**GBPSMNDR12024- INNOX
POWER SUPPLY 5AMP 24V
DC (DIN RAIL
TRANSFORMER ONLY)**



**GBPSMNDR24024-INNOX
POWER SUPPLY 10AMP 24V
DC (DIN RAIL
TRANSFORMER ONLY)**



**GBPSMNDR48024-INNOX
POWER SUPPLY 20AMP 24V
DC (DIN RAIL
TRANSFORMER ONLY)**



**GBPSMSDR96024-INNOX
POWER SUPPLY 40AMP 24V
DC (DIN RAIL
TRANSFORMER ONLY)**



**EPS13.810-INNOX POWER
SUPPLY 13.8V DC 10 AMP**



EMCB6A-MCB 6A



GB DINRAIL 200MM



**GBBV63-BOX VENTS FOR
POWER SUPPLIES**



**GBDPM10-DIGITAL PANEL
METER DC100 VOLT 10 AMP**



**GBDPM20-DIGITAL PANEL
METER DC100 VOLT 20 AMP**



**GBPE05-INNOX PLASTIC
ENCLOSURE WITH HINGED
TRANSPARENT LID
200X300X150MM**

GBPS - GB POWER SUPPLIES SPARES



**GBEEL0.53CP-INNOX
ELECTRICAL LEAD 0.5MM 3
CORE WITH PLUG**



**GBCGPG7-BLACK CABLE
GLAND 12.4MM PG7**



**GBDRQC2P-GB DINRAIL
QUICK CONNECTOR 2 POLE**

GBAW - GB AUTO WASHER CONTROLLER PNEUMATIC



**GBAW- GB AUTO WASHER
CONTROLLER FOR PLANT
AND 1 VAT WITH SECOND
VAT RINSE ONLY**

GBAW - GB AUTO WASHER CONTROLLER PNEUMATIC SPARES



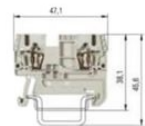
**GBDRC2P16A-GB DINRAIL
CONTACTOR 2 POLE 16A
240V AC COIL**



**GBDRC2P25A-GB DINRAIL
CONTACTOR 2 POLE 24VDC
COIL**



**GBDRT1PE-GB DINRAIL
TERMINAL 1 POLE EARTH**



**GBDRT1PG-GB DINRAIL
TERMINAL SPRING TYPE 1
POLE**



**GBDRT3PG-DINRAIL
TERMINAL SPRING TYPE 3
POLE GREY**



**GBLEDA-GB ALARM AUDIO
AND FLASHING RED LED**



**GBMCC50-GB MULTI CORE
CABLE 50 CORE 0.08MM**



**GBPLC7-GB PLC HMI ALL IN
ONE 4 TEMPERATURE, 28
RELAY INPUTS AND
OUTPUTS 24V DC**

GBAW - GB AUTO WASHER CONTROLLER PNEUMATIC SPARES



**GBPMB08-3V210-08
MANIFOLD MOUNTED
VALVES X 8 BLOCKS**



**GBPT100-GB TEMPERATURE
SENSOR PT100 5 METER**



**GBRRB-GB REVERSING
RELAY 2 POLE 24V DC AND
BASE**



**GB AIR PRESSURE SWITCH
DIAPHRAM TYPE**



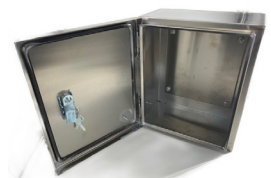
**GBCGP7-BLACK CABLE
GLAND 12.4MM PG7**



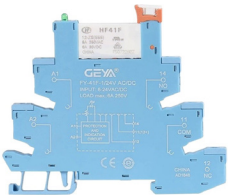
**GBRS2P25A-ROTARY
ON/OFF 2 POLE SWITCH 25
AMP**



**GBDRT2PG-DINRAIL
TERMINAL SCREW TYPE 2
POLE GREY**



**GBSE02-STAINLESS STEEL
ENCLOSURE COMPLETE
WITH BACKING PLATE
400X500X200MM**



**GBDR1PR-GB DINRAIL 1
POLE 24V DC COIL RELAY**



**GBHDR10024-HDR 4A 24V
DC DIN RAIL POWER
SUPPLY**



**GBPSBRA-PROX SWITCH
BRACKET RIGHT ANGLE 12
MM**

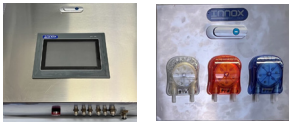


**GBPSBS-PROX SWITCH
MOUNTING BRACKET
STRAIGHT 12MM**



**ZXPSWM12-M12 DC 3 WIRE
24V NPN INDUCTIVE
PROXIMITY SWITCH
SENSOR**

GBAWCK50-GB AUTOWASH COMPLETE KIT 50MM JETTER PICKUP AND 50MM DIVERT VALVE



GBAWCK50-GB AUTOWASH COMPLETE KIT 50MM JETTER PICKUP AND 50MM DIVERT VALVE



GBAW- GB AUTO WASHER CONTROLLER FOR PLANT AND 1 VAT WITH SECOND VAT RINSE ONLY



GBCD3P-GB CHEMICAL DISPENSER THREE PUMPS IN STAINLESS STEEL ENCLOSURE



EA3WSBV50-ELECTRIC ACTUATED 3 WAY BALL VALVE 50MM 24V DC



IFTA50-INNOX FERRULE THERMOWELL ADAPTOR 50MM



PBAEWA02-1/4" BRASS AIR EXHAUST WITH SPEED ADJUSTER



PF3WBV50-PNEUMATIC FERRULE 3 WAY T PORT BALL VALVE 50MM



PFBV50-PNEUMATIC FERRULE BUTTERFLY VALVE 50MM



PSV25-PNEUMATIC STRAIGHT VALVE 25MM



PSV38-PNEUMATIC STRAIGHT VALVE 38MM



SL0802-1/4" BSP MALE THREAD SWIVEL 90 DEGREE WITH SPEED ADJUSTER TO TUBE 8MM



GBWLS WHITE LEVEL SWITCH CHEMICAL RESISTANT 85 DEGREE C

GBMR - GB MILK RECOVERY CONTROLLER



GBMR12 -STAINLESS STEEL ENCLOSED MILK RECOVERY UNIT 12MM TUBE



FTEC3810-FERRULE THREADED END CAP 38MM FERRULE 10MM BSPT



FAPV38-FERRULE AIR PURGE VALVE 38MM



FAPV50-FERRULE AIR PURGE VALVE 50MM

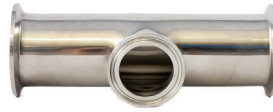
GBMR - GB MILK RECOVERY CONTROLLER



**FAPVC38-FERRULE AIR
PURGE QUICK CLAMP FOR
38MM TUBE**



**FAPVC50-FERRULE AIR
PURGE QUICK CLAMP FOR
50MM TUBE**



**FSRT503850-FERRULE
SHORT REDUCING TEE
50MM 38MM 50MM**



**FSRT038- FERRULE SHORT
EQUAL TEE 38MM**



**FSRTO503850-FERRULE
SHORT REDUCING TEE
OFFSET 503850 MM**



**FSET505050-FERRULE
SHORT EQUAL TEE 50MM
50MM 50MM**



**PPU1225 - POLYURETHANE
TUBING PER 25 METER
12MM BLUE**



**AF2000-LIQUID AND DEBRIS
FILTER FOR PNEUMATIC
SYSTEM**



**AC2010-02 FILTER
REGULATOR WATER
SEPARATOR**

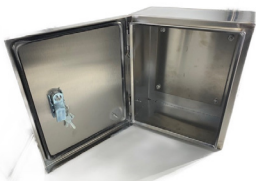


AR2000-02 AIR REGULATOR



**PC1202-1/4" BSP MALE
THREAD TO 12MM TUBE**

GBMR12-GB MILK RECOVERY CONTROLLER SPARES



**GBSSE01-STAINLESS STEEL
ENCLOSURE COMPLETE
WITH BACK PLATE
250X300X150 MM**



**GBPSMHDR3024- INNOX
POWER SUPPLY 1.25AMP
24V DC (DIN RAIL
TRANSFORMER ONLY)**



**3R210-3PORT 2 WAY
SOLENOID VALVE ONLY
(COIL AS REQUIRED)**



**PBHE12-PNUMATIC
BULKHEAD ELBOW 12MM**

GBMR12-GB MILK RECOVERY CONTROLLER SPARES



**PL1202-1/4" BSP MALE
THREAD 90 DEGREE ELBOW
TO 12MM TUBE**



**PL0802-1/4" BSP MALE
THREAD 90 DEGREE ELBOW
TO 8MM TUBE**



**PBAE02-1/4" BRASS AIR
EXHAUST**



**GBMT - GB MULTI VOLTAGE
240VAC/24V AC/DC ON
TIMER /OFF TIMER**



**GBDOT-ERV-60D Timer
DELAY ON**



**GBDOT1 - ERV-08 TIMER
DELAY ON**



**PCF0802-PNEUMATIC
FEMALE CONNECTOR 8MM
1/4**



**PQRC08-PNEUMATIC QUICK
RELEASE CONNECTOR WITH
BSP FEMALE 08MM**



**PQRCM08-PNEUMATIC
QUICK COUPLE MALE PART
08 MM BSP**



**PQRCF08- PNEUMATIC
QUICK CONNECTOR BSP
FEMALE 08MM**

GBAWHF - GB AUTO WATER HEATER FILL



**GBAWHF-AUTO HOT
WATER FILL CONTROLLER 1
WATER HEATER STRAP ON
SENSOR 14MM-32MM
SIGHTGLASS**



**GBAWHF1-GB AUTO WATER
HEATER FILL CONTROL(TYPE
1) WITH CLIP ON SENSOR
6-12MM**

GBAWHF - GB AUTO WATER HEATER FILL SPARE PARTS



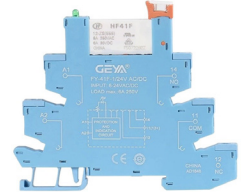
**GBPE02-ELECTRICAL
PLASTIC ENCLOSURE WITH
SCREWS 200X155X80MM**



**GBPE03 -ELECTRICAL
PLASTIC ENCLOSURE WITH
SCREWS 200X155X120 MM**



**GBCGPG7-BLACK CABLE
GLAND 12.4MM PG7**



**GBDR1PR-GB DINRAIL 1
POLE 24V DC COIL RELAY**



GB DINRAIL 200MM



**GBDRQC2P-GB DINRAIL
QUICK CONNECTOR 2 POLE**



**GBDRQC3P-GB DINRAIL
QUICK CONNECTOR 3 POLE**



**GBEEL0.53CP-INNOX
ELECTRICAL LEAD 0.5MM 3
CORE WITH PLUG**



**GBHWPSV15-GB HOT
WATER PLASTIC SOLINOID
VALVE 15MM 24V DC
100PSI 85 DEGREE C**



**GBWH19-GB WIRING
HARNESS 19MM FOR
GBLS19**



**GBLS19-GB METAL
LATCHING SWITCH BLUE
19MM**



**GBMT - GB MULTI VOLTAGE
240VAC/24V AC/DC ON
TIMER /OFF TIMER**



**GBDOT-ERV-60D Timer
DELAY ON**



**GBDOT1 - ERV-08 TIMER
DELAY ON**

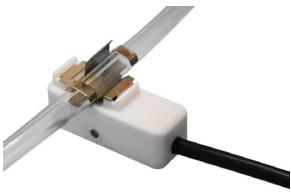


**GBPSMHDR3024- INNOX
POWER SUPPLY 1.25AMP
24V DC (DIN RAIL
TRANSFORMER ONLY)**



**GBWLSO-GB WATER LEVEL
SENSOR STRAP ON TYPE
14M-32MM NON CONTACT
5M LEAD**

GBAWHF - GB AUTO WATER HEATER FILL SPARE PARTS



**GBWLSCO-GB WATER LEVEL
SENSOR CLIP ON TYPE
6-12MM NON CONTACT 5M
LEAD**



**GBPWLSSO- GB WATER
LEVEL SENSOR STRAP ON
TYPE 14M-32MM NON
CONTACT 5M LEAD**

GBPE- PLASTIC ENCLOSURE



**GBPE01-ELECTRICAL
PLASTIC ENCLOSURE WITH
SCREWS 120X120X90MM**



**GBPE02-ELECTRICAL
PLASTIC ENCLOSURE WITH
SCREWS 200X155X80MM**



**GBPE03 -ELECTRICAL
PLASTIC ENCLOSURE WITH
SCREWS 200X155X120 MM**



**GBPE04-ELECTRICAL
PLASTIC ENCLOSURE WITH
SCREWS 300X220X120MM**



**GBPE05-INNOX PLASTIC
ENCLOSURE WITH HINGED
TRANSPARENT LID
200X300X150MM**

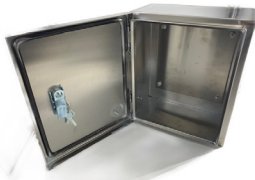


**GBPE06-ELECTRICAL
PLASTIC ENCLOSURE
200X300X150MM GREY
HINGE AND LATCH**

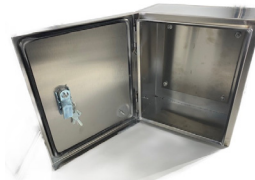
GBSSE - INNOX STAINLESS STEEL ENCLOSURE



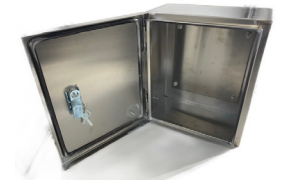
**GBSSE05-STAINLESS STEEL
OUTSIDE ENCLOSURE
300X400X170MM
COMPLETE WITH BP**



**GBSSE01-STAINLESS STEEL
ENCLOSURE COMPLETE
WITH BACK PLATE
250X300X150 MM**

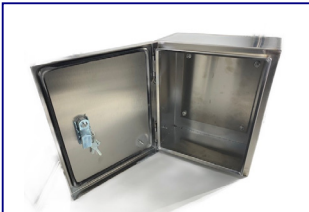


**GBSSE02-STAINLESS STEEL
ENCLOSURE COMPLETE
WITH BACKING PLATE
400X500X200MM**



**GBSSE03-STAINLESS STEEL
ENCLOSURE WITH BACKING
PLATE 300X400X150MM**

GBSSE - INNOX STAINLESS STEEL ENCLOSURE



**GBSSE04-STAINLESS STEEL
ENCLOSURE COMPLETE
WITH BACKING PLATES
500X600X200MM**

ZXCIP - INNOX WATERPROOF CONNECTORS



**ZXSCIP683T-WATERPROOF
CONNECTOR TEE 3 WIRE**



**ZX3WLC-3 WAY LOOM
CONNECTOR BOX IP66**



**ZXSCIP683C-INNOX
WATERPROOF CONNECTOR
3 CORE IP68**

Innox Limited – Terms & Conditions of Trade

1. Definitions

- 1.1 “**Contract**” means the terms and conditions contained herein, together with any quotation, order, invoice or other document or amendments expressed to be supplemental to this Contract.
- 1.2 “**Cookies**” means small files which are stored on a user’s computer. They are designed to hold a modest amount of data (including Personal Information) specific to a particular client and website, and can be accessed either by the web server or the client’s computer. If the Customer does not wish to allow Cookies to operate in the background when using the Supplier’s website, then the Customer shall have the right to enable / disable the Cookies first by selecting the option to enable / disable provided on the website, prior to making enquiries via the website.
- 1.3 “**Customer**” means the person/s, entities or any person acting on behalf of and with the authority of the Customer requesting the Supplier to provide the Services as specified in any proposal, quotation, order, invoice or other documentation, and:
(a) if there is more than one Customer, is a reference to each Customer jointly and severally; and
(b) if the Customer is a partnership, it shall bind each partner jointly and severally; and
(c) if the Customer is a part of a Trust, shall be bound in their capacity as a trustee; and
(d) includes the Customer’s executors, administrators, successors and permitted assigns.
- 1.4 “**Goods**” means all Goods or Services (including, but not limited to, consultation and design Services) supplied by the Supplier to the Customer at the Customer’s request from time to time (where the context so permits the terms ‘Goods’ or ‘Services’ shall be interchangeable for the other).
- 1.5 “**Price**” means the Price payable (plus any Goods and Services Tax (“GST”) where applicable) for the Goods as agreed between the Supplier and the Customer in accordance with clause 7 below.
- 1.6 “**Supplier**” means Innox Limited, its successors and assigns.

2. Acceptance

- 2.1 The Customer is taken to have exclusively accepted and is immediately bound, jointly and severally, by these terms and conditions if the Customer places an order for or accepts Delivery of the Goods.
- 2.2 In the event of any inconsistency between the terms and conditions of this Contract and any other prior document or schedule that the parties have entered into, the terms of this Contract shall prevail.
- 2.3 Any amendment to the terms and conditions contained in this Contract may only be amended in writing by the consent of both parties.
- 2.4 The Customer acknowledges that the supply of Goods on credit shall not take effect until the Customer has completed a credit application with the Supplier and it has been approved with a credit limit established for the account.
- 2.5 In the event that the supply of Goods requested exceeds the Customer’s credit limit and/or the account exceeds the payment terms, the Supplier reserves the right to refuse Delivery.
- 2.6 Any advice, recommendation, information, assistance or service provided by the Supplier in relation to the Goods or Services supplied is given in good faith to the Customer, or the Customer’s agent and is based on the Supplier’s own knowledge and experience and shall be accepted without liability on the part of the Supplier. Where such advice or recommendations are not acted upon then the Supplier shall require the Customer or their agent to authorise commencement of the Services in writing. The Supplier shall not be liable in any way whatsoever for any damages or losses that occur after any subsequent commencement of the Services.
- 2.7 None of the Supplier’s agents or representatives are authorised to make any representations, statements, conditions or agreements not expressed by the manager of the Supplier in writing nor is the Supplier bound by any such unauthorised statements.
- 2.8 Electronic signatures shall be deemed to be accepted by either party providing that the parties have complied with Section 226 of the Contract and Commercial Law Act 2017 or any other applicable provisions of that Act or any Regulations referred to in that Act.

3. Authorised Representative

- 3.1 The Customer acknowledges that the Supplier shall (for the duration of the Services) liaise directly with one (1) authorised representative, and that once introduced as such to the Supplier, that person shall have the full authority of the Customer to order any Goods and/or to request any variation thereto on the Customer’s behalf. The Customer accepts that they will be solely liable to the Supplier for all additional costs incurred by the Supplier (including the Supplier’s profit margin) in providing any Goods or variation/s requested thereto by the Customer’s duly authorised representative.

4. Errors and Omissions

- 4.1 The Customer acknowledges and accepts that the Supplier shall, without prejudice, accept no liability in respect of any alleged or actual error(s) and/or omission(s):
(a) resulting from an inadvertent mistake made by the Supplier in the formation and/or administration of this Contract; and/or
(b) contained in/omitted from any literature (hard copy and/or electronic) supplied by the Supplier in respect of the Services.
- 4.2 In the event such an error and/or omission occurs in accordance with clause 4.1, and is not attributable to the negligence and/or wilful misconduct of the Supplier; the Customer shall not be entitled to treat this Contract as repudiated nor render it invalid.

5. Change in Control

- 5.1 The Customer shall give the Supplier not less than fourteen (14) days prior written notice of any proposed change of ownership of the Customer and/or any other change in the Customer’s details (including but not limited to, changes in the Customer’s name, address and contact phone or fax number/s, change of trustees or business practice). The Customer shall be liable for any loss incurred by the Supplier as a result of the Customer’s failure to comply with this clause.

6. On-Line Ordering

- 6.1 The Customer acknowledges and agrees that:
(a) the Supplier does not guarantee the website’s performance;
(b) display on the website does not guarantee the availability of any particular Goods; therefore, all orders placed through the website shall be subject to confirmation of acceptance by the Supplier;

Innox Limited – Terms & Conditions of Trade

- (c) on-line ordering may be unavailable from time to time for regularly scheduled maintenance and/or upgrades; and
- (d) there are inherent hazards in electronic distribution, and as such the Supplier cannot warrant against delays or errors in transmitting data between the Customer and the Supplier including orders, and you agree that to the maximum extent permitted by law, the Supplier will not be liable for any losses which the Customer suffers as a result of online-ordering not being available or for delays or errors in transmitting orders.

6.2 The Supplier reserves the right to terminate the Customer's order if it learns that you have provided false or misleading information, interfered with other users or the administration of the Supplier's business, or violated these terms and conditions.

7. Price and Payment

7.1 At the Supplier's sole discretion the Price shall be either:

- (a) as indicated on any invoice provided by the Supplier to the Customer; or
- (b) the Price as at the date of Delivery of the Goods according to the Supplier's current Price list; or
- (c) the Supplier's quoted Price (subject to clause 7.1) which will be valid for the period stated in the quotation or otherwise for a period of thirty (30) days.

7.2 The Supplier reserves the right to change the Price:

- (a) if a variation to the Goods which are to be supplied is requested; or
- (b) if a variation to the Services originally scheduled (including any applicable plans or specifications) is requested; or
- (c) where additional Services are required due to the discovery of hidden or unidentifiable difficulties (including, but not limited to, incorrect measurements, plans and/or specifications provided by the Customer or as a result of delays from third party suppliers, which are only discovered on commencement of the Services; or
- (d) if during the course of the Services, the Goods cease to be available from the Supplier's third party suppliers, then the Supplier reserves the right to provide alternative Goods, subject to prior confirmation and agreement of both parties; or
- (e) in the event of increases to the Supplier in the cost of materials and labour, or shipping times, (including but not limited to overseas transactions that may increase as a consequence of variations in foreign currency rates of exchange and/or international freight and insurance charges) which are beyond the Supplier's control.

7.3 Variations will be charged for on the basis of the Supplier's quotation, and will be detailed in writing, and shown as variations on the Supplier's invoice. The Customer shall be required to respond to any variation submitted by the Supplier within ten (10) working days. Failure to do so will entitle the Supplier to add the cost of the variation to the Price. Payment for all variations must be made in full at the time of their completion.

7.4 At the director's sole discretion a deposit may be required.

7.5 Time for payment for the Goods being of the essence, the Price will be payable by the Customer on the date/s determined by the Supplier, which may be:

- (a) before Delivery of the Goods;
- (b) for certain approved Customers, due twenty (20) days following the end of the month in which a statement is posted to the Customer's address or address for notices;
- (c) the date specified on any invoice or other form as being the date for payment; or
- (d) failing any notice to the contrary, the date which is seven (7) days following the date of any invoice given to the Customer by the Supplier.

7.6 Payment may be made by electronic/on-line banking, or by any other method as agreed to between the Customer and the Supplier.

7.7 The Supplier may in its discretion allocate any payment received from the Customer towards any invoice that the Supplier determines and may do so at the time of receipt or at any time afterwards. On any default by the Customer the Supplier may re-allocate any payments previously received and allocated. In the absence of any payment allocation by the Supplier, payment will be deemed to be allocated in such manner as preserves the maximum value of the Supplier's Purchase Money Security Interest (as defined in the PPSA) in the Goods.

7.8 The Customer shall not be entitled to set off against, or deduct from the Price, any sums owed or claimed to be owed to the Customer by the Supplier nor to withhold payment of any invoice because part of that invoice is in dispute.

7.9 Unless otherwise stated the Price does not include GST. In addition to the Price, the Customer must pay to the Supplier an amount equal to any GST the Supplier must pay for any supply by the Supplier under this or any other contract for the sale of the Goods. The Customer must pay GST, without deduction or set off of any other amounts, at the same time and on the same basis as the Customer pays the Price. In addition, the Customer must pay any other taxes and duties that may be applicable in addition to the Price except where they are expressly included in the Price.

8. Delivery of Goods

8.1 Delivery ("**Delivery**") of the Goods is taken to occur at the time that the Supplier (or the Supplier's nominated carrier) delivers the Goods to the Customer's nominated address even if the Customer is not present at the address.

8.2 At the Supplier's sole discretion the cost of Delivery is in addition to the Price.

8.3 The Supplier may deliver the Goods in separate instalments. Each separate instalment shall be invoiced and paid in accordance with the provisions in these terms and conditions.

8.4 Any time specified by the Supplier for Delivery of the Goods is an estimate only and the Supplier will not be liable for any loss or damage incurred by the Customer as a result of Delivery being late. However both parties agree that they shall make every endeavour to enable the Goods to be delivered at the time and place as was arranged between both parties. In the event that the Supplier is unable to supply the Goods as agreed solely due to any action or inaction of the Customer, then the Supplier shall be entitled to charge a reasonable fee for redelivery and/or storage.

Innox Limited – Terms & Conditions of Trade

9. Risk

- 9.1 Risk of damage to or loss of the Goods passes to the Customer on Delivery and the Customer must insure the Goods on or before Delivery.
- 9.2 If any of the Goods are damaged or destroyed following Delivery but prior to ownership passing to the Customer, the Supplier is entitled to receive all insurance proceeds payable for the Goods. The production of these terms and conditions by the Supplier is sufficient evidence of the Supplier's rights to receive the insurance proceeds without the need for any person dealing with the Supplier to make further enquiries.
- 9.3 If the Customer requests the Supplier to leave Goods outside the Supplier's premises for collection or to deliver the Goods to an unattended location then such Goods shall be left at the Customer's sole risk.
- 9.4 The Supplier shall be entitled to rely on the accuracy of any plans, specifications and other information provided by the Customer. The Customer acknowledges and agrees that in the event that any of this information provided by the Customer is inaccurate, the Supplier accepts no responsibility for any loss, damages, or costs however resulting from these inaccurate plans, specifications or other information.

10. Specifications

- 10.1 The Customer acknowledges and accepts that:
- (a) all descriptive specifications, illustrations, drawings, data, dimensions, ratings and weights stated in the Supplier's or manufacturer's fact sheets, price lists or advertising material, are approximate only and are given by way of identification only. The Customer shall not be entitled to rely on such information, and any use of such does not constitute a sale by description, and does not form part of the Contract, unless expressly stated as such in writing by the Supplier; and
 - (b) whilst the Supplier may have provided information or figures to the Customer regarding the performance of the Goods, the Customer acknowledges that the Supplier has given these in good faith, and are estimates based on industry based estimates used under optimal operating conditions.

11. Title

- 11.1 The Supplier and the Customer agree that ownership of the Goods shall not pass until:
- (a) the Customer has paid the Supplier all amounts owing to the Supplier; and
 - (b) the Customer has met all of its other obligations to the Supplier.
- 11.2 Receipt by the Supplier of any form of payment other than cash shall not be deemed to be payment until that form of payment has been honoured, cleared or recognised.
- 11.3 It is further agreed that until ownership of the Goods passes to the Customer in accordance with clause 11.1:
- (a) the Customer is only a bailee of the Goods and must return the Goods to the Supplier on request;
 - (b) the Customer holds the benefit of the Customer's insurance of the Goods on trust for the Supplier and must pay to the Supplier the proceeds of any insurance in the event of the Goods being lost, damaged or destroyed;
 - (c) the Customer must not sell, dispose, or otherwise part with possession of the Goods other than in the ordinary course of business and for market value. If the Customer sells, disposes or parts with possession of the Goods then the Customer must hold the proceeds of any such act on trust for the Supplier and must pay or deliver the proceeds to the Supplier on demand;
 - (d) the Customer should not convert or process the Goods or intermix them with other goods but if the Customer does so then the Customer holds the resulting product on trust for the benefit of the Supplier and must sell, dispose of or return the resulting product to the Supplier as it so directs;
 - (e) the Customer irrevocably authorises the Supplier to enter any premises where the Supplier believes the Goods are kept and recover possession of the Goods;
 - (f) the Supplier may recover possession of any Goods in transit whether or not Delivery has occurred;
 - (g) the Customer shall not charge or grant an encumbrance over the Goods nor grant nor otherwise give away any interest in the Goods while they remain the property of the Supplier; and
 - (h) the Supplier may commence proceedings to recover the Price of the Goods sold notwithstanding that ownership of the Goods has not passed to the Customer.

12. Personal Property Securities Act 1999 ("PPSA")

- 12.1 Upon assenting to these terms and conditions in writing the Customer acknowledges and agrees that:
- (a) these terms and conditions constitute a security agreement for the purposes of the PPSA; and
 - (b) a security interest is taken in all Goods that have previously been supplied and that will be supplied in the future by the Supplier to the Customer, and the proceeds from such Goods as listed by the Supplier to the Customer in invoices rendered from time to time.
- 12.2 The Customer undertakes to:
- (a) sign any further documents and/or provide any further information (such information to be complete, accurate and up-to-date in all respects) which the Supplier may reasonably require to register a financing statement or financing change statement on the Personal Property Securities Register;
 - (b) indemnify, and upon demand reimburse, the Supplier for all expenses incurred in registering a financing statement or financing change statement on the Personal Property Securities Register or releasing any Goods charged thereby;
 - (c) not register, or permit to be registered, a financing statement or a financing change statement in relation to the Goods or the proceeds of such Goods in favour of a third party without the prior written consent of the Supplier; and
 - (d) immediately advise the Supplier of any material change in its business practices of selling the Goods which would result in a change in the nature of proceeds derived from such sales.
- 12.3 The Supplier and the Customer agree that nothing in sections 114(1)(a), 133 and 134 of the PPSA shall apply to these terms and conditions.
- 12.4 The Customer waives its rights as a debtor under sections 116, 120(2), 121, 125, 126, 127, 129, and 131 of the PPSA.
- 12.5 Unless otherwise agreed to in writing by the Supplier, the Customer waives its right to receive a verification statement in accordance with section 148 of the PPSA.
- 12.6 The Customer shall unconditionally ratify any actions taken by the Supplier under clauses 12.1 to 12.5.
- 12.7 Subject to any express provisions to the contrary (including those contained in this clause 12), nothing in these terms and conditions is intended to have the effect of contracting out of any of the provisions of the PPSA.

Innox Limited – Terms & Conditions of Trade

13. Security and Charge

- 13.1 In consideration of the Supplier agreeing to supply the Goods, the Customer charges all of its rights, title and interest (whether joint or several) in any land, realty or other assets capable of being charged, owned by the Customer either now or in the future, and the Customer grants a security interest in all of its present and after-acquired property, to secure the performance by the Customer of its obligations under these terms and conditions (including, but not limited to, the payment of any money). The terms of the charge and security interest are the terms of Memorandum 2018/4344 registered pursuant to s.209 of the Land Transfer Act 2017.
- 13.2 The Customer indemnifies the Supplier from and against all the Supplier's costs and disbursements including legal costs on a solicitor and own client basis incurred in exercising the Supplier's rights under this clause.
- 13.3 The Customer irrevocably appoints the Supplier and each director of the Supplier as the Customer's true and lawful attorney/s to perform all necessary acts to give effect to the provisions of this clause 13 including, but not limited to, signing any document on the Customer's behalf.

14. Defects

- 14.1 The Customer shall inspect the Goods on Delivery and shall within seven (7) days of Delivery (time being of the essence) notify the Supplier of any alleged defect, shortage in quantity, damage or failure to comply with the description or quote. The Customer shall afford the Supplier an opportunity to inspect the Goods within a reasonable time following Delivery if the Customer believes the Goods are defective in any way. If the Customer fails to comply with these provisions the Goods shall be presumed to be free from any defect or damage. For defective Goods, which the Supplier has agreed in writing that the Customer is entitled to reject, the Supplier's liability is limited to either (at the Supplier's discretion) replacing the Goods or repairing the Goods.
- 14.2 Goods will not be accepted for return other than in accordance with 14.1 above, and provided that:
- (a) the Supplier has agreed in writing to accept the return of the Goods; and
 - (b) the Goods are returned within seven (7) days of the invoice date; and
 - (c) the Supplier will not be liable for Goods which have not been stored or used in a proper manner; and
 - (d) the Goods are returned in the condition in which they were delivered and with all packaging material, brochures and instruction material in as new condition as is reasonably possible in the circumstances.
- 14.3 The Supplier may (in its discretion) accept the return of Goods for credit but this may incur a handling fee of twenty five percent (25%) of the value of the returned Goods plus any freight if the goods are returned more than seven (7) days from the date of invoice.
- 14.4 Subject to clause 14.1, non-stocklist items or Goods made to the Customer's specifications are not acceptable for credit or return.

15. Warranty

- 15.1 Subject to the conditions of warranty set out in clause 15.2 the Supplier warrants that if any defect in any Goods or Services provided by the Supplier becomes apparent and is reported to the Supplier within twelve (12) months from the date of invoice (time being of the essence) then the Supplier will either (at the Supplier's sole discretion) replace or remedy the defect.
- 15.2 The conditions applicable to the warranty given by clause 15.1 are:
- (a) the warranty shall not cover any defect or damage which may be caused or partly caused by or arise through:
 - (i) failure on the part of the Customer to properly maintain any Goods or serviced item; or
 - (ii) failure on the part of the Customer to follow any instructions or guidelines provided by the Supplier; or
 - (iii) any use of any Goods or serviced item otherwise than for any application specified on a quote or order form; or
 - (iv) the continued use of any Goods or serviced item after any defect becomes apparent or would have become apparent to a reasonably prudent operator or user; or
 - (v) fair wear and tear, any accident or act of God.
 - (b) the warranty shall cease and the Supplier shall thereafter in no circumstances be liable under the terms of the warranty if the defect is repaired, altered or overhauled without the Supplier's consent.
 - (c) in respect of all claims the Supplier shall not be liable to compensate the Customer for any delay in either replacing or remedying the defective Goods or Services or in properly assessing the Customer's claim.
- 15.3 For Goods not manufactured by the Supplier, the warranty shall be the current warranty provided by the manufacturer of the Goods. The Supplier shall not be bound by nor be responsible for any term, condition, representation or warranty other than that which is given by the manufacturer of the Goods.

16. Consumer Guarantees Act 1993

- 16.1 If the Customer is acquiring Goods for the purposes of a trade or business, the Customer acknowledges that the provisions of the Consumer Guarantees Act 1993 ("CGA") do not apply to the supply of Goods by the Supplier to the Customer.

17. Intellectual Property

- 17.1 Where the Supplier has designed, drawn or developed Goods for the Customer, then the copyright in any designs and drawings and documents shall remain the property of the Supplier. Under no circumstances may such designs, drawings and documents be used without the express written approval of the Supplier.
- 17.2 The Customer warrants that all designs, specifications or instructions given to the Supplier will not cause the Supplier to infringe any patent, registered design or trademark in the execution of the Customer's order and the Customer agrees to indemnify the Supplier against any action taken by a third party against the Supplier in respect of any such infringement.
- 17.3 The Customer agrees that the Supplier may (at no cost) use for the purposes of marketing or entry into any competition, any documents, designs, drawings or Goods which the Supplier has created for the Customer.

18. Default and Consequences of Default

- 18.1 Interest on overdue invoices shall accrue daily from the date when payment becomes due, until the date of payment, at a rate of two and a half percent (2.5%) per calendar month (and at the Supplier's sole discretion such interest shall compound monthly at such a rate) after as well as before any judgment.

Innox Limited – Terms & Conditions of Trade

- 18.2 If the Customer owes the Supplier any money the Customer shall indemnify the Supplier from and against all costs and disbursements incurred by the Supplier in recovering the debt (including but not limited to internal administration fees, legal costs on a solicitor and own client basis, the Supplier's collection agency costs, and bank dishonour fees).
- 18.3 Further to any other rights or remedies the Supplier may have under this Contract, if a Customer has made payment to the Supplier, and the transaction is subsequently reversed, the Customer shall be liable for the amount of the reversed transaction, in addition to any further costs incurred by the Supplier under this clause 18 where it can be proven that such reversal is found to be illegal, fraudulent or in contravention to the Customer's obligations under this Contract.
- 18.4 Without prejudice to the Supplier's other remedies at law the Supplier shall be entitled to cancel all or any part of any order of the Customer which remains unfulfilled and all amounts owing to the Supplier shall, whether or not due for payment, become immediately payable if:
- (a) any money payable to the Supplier becomes overdue, or in the Supplier's opinion the Customer will be unable to make a payment when it falls due;
 - (b) the Customer has exceeded any applicable credit limit provided by the Supplier;
 - (c) the Customer becomes insolvent, convenes a meeting with its creditors or proposes or enters into an arrangement with creditors, or makes an assignment for the benefit of its creditors; or
 - (d) a receiver, manager, liquidator (provisional or otherwise) or similar person is appointed in respect of the Customer or any asset of the Customer.
- 19. Cancellation**
- 19.1 Without prejudice to any other remedies the Supplier may have, if at any time the Customer is in breach of any obligation (including those relating to payment) under these terms and conditions the Supplier may suspend or terminate the supply of Goods to the Customer. The Supplier will not be liable to the Customer for any loss or damage the Customer suffers because the Supplier has exercised its rights under this clause.
- 19.2 The Supplier may cancel any Contract to which these terms and conditions apply or cancel Delivery of Goods at any time before the Goods are delivered by giving written notice to the Customer. On giving such notice the Supplier shall repay to the Customer any money paid by the Customer for the Goods. The Supplier shall not be liable for any loss or damage whatsoever arising from such cancellation.
- 19.3 In the event that the Customer cancels Delivery of Goods the Customer shall be liable for any and all loss incurred (whether direct or indirect) by the Supplier as a direct result of the cancellation (including, but not limited to, any loss of profits).
- 19.4 Cancellation of orders for Goods made to the Customer's specifications, or for non-stocklist items, will definitely not be accepted once production has commenced, or an order has been placed.
- 20. Privacy Policy**
- 20.1 All emails, documents, images or other recorded information held or used by the Supplier is "**Personal Information**" as defined and referred to in clause 20.3 and therefore considered confidential. The Supplier acknowledges its obligation in relation to the handling, use, disclosure and processing of Personal Information pursuant to the Privacy Act 2020 ("the Act") including Part II of the OECD Guidelines as set out in the Act. The Supplier acknowledges that in the event it becomes aware of any data breaches and/or disclosure of the Customer's Personal Information, held by the Supplier that may result in serious harm to the Customer, the Supplier will notify the Customer in accordance with the Act. Any release of such Personal Information must be in accordance with the Act and must be approved by the Customer by written consent, unless subject to an operation of law.
- 20.2 Notwithstanding clause 20.1, privacy limitations will extend to the Supplier in respect of Cookies where the Customer utilises the Supplier's website to make enquiries. The Supplier agrees to display reference to such Cookies and/or similar tracking technologies, such as pixels and web beacons (if applicable), such technology allows the collection of Personal Information such as the Customer's:
- (a) IP address, browser, email client type and other similar details;
 - (b) tracking website usage and traffic; and
 - (c) reports are available to the Supplier when the Supplier sends an email to the Customer, so the Supplier may collect and review that information ("collectively Personal Information")
- If the Customer consents to the Supplier's use of Cookies on the Supplier's website and later wishes to withdraw that consent, the Customer may manage and control the Supplier's privacy controls via the Customer's web browser, including removing Cookies by deleting them from the browser history when exiting the site.
- 20.3 The Customer authorises the Supplier or the Supplier's agent to:
- (a) access, collect, retain and use any information about the Customer;
 - (i) including, name, address, D.O.B, occupation, driver's license details, electronic contact (email, Facebook or Twitter details), medical insurance details or next of kin and other contact information (where applicable), previous credit applications, credit history or any overdue fines balance information held by the Ministry of Justice for the purpose of assessing the Customer's creditworthiness; or
 - (ii) for the purpose of marketing products and services to the Customer.
 - (b) disclose information about the Customer, whether collected by the Supplier from the Customer directly or obtained by the Supplier from any other source, to any other credit provider or any credit reporting agency for the purposes of providing or obtaining a credit reference, debt collection or notifying a default by the Customer.
- 20.4 Where the Customer is an individual the authorities under clause 20.3 are authorities or consents for the purposes of the Privacy Act 2020.
- 20.5 The Customer shall have the right to request (by e-mail) from the Supplier, a copy of the Personal Information about the Customer retained by the Supplier and the right to request that the Supplier correct any incorrect Personal Information.
- 20.6 The Supplier will destroy Personal Information upon the Customer's request (by e-mail) or if it is no longer required unless it is required in order to fulfil the obligations of this Contract or is required to be maintained and/or stored in accordance with the law.
- 20.7 The Customer can make a privacy complaint by contacting the Supplier via e-mail. The Supplier will respond to that complaint within seven (7) days of receipt and will take all reasonable steps to make a decision as to the complaint within twenty (20) days of receipt of the complaint. In the event that the Customer is not satisfied with the resolution provided, the Customer can make a complaint to the Privacy Commissioner at <http://www.privacy.org.nz>.

Innox Limited – Terms & Conditions of Trade

21. Service of Notices

- 21.1 Any written notice given under this Contract shall be deemed to have been given and received:
- (a) by handing the notice to the other party, in person;
 - (b) by leaving it at the address of the other party as stated in this Contract;
 - (c) by sending it by registered post to the address of the other party as stated in this Contract;
 - (d) if sent by facsimile transmission to the fax number of the other party as stated in this Contract (if any), on receipt of confirmation of the transmission;
 - (e) if sent by email to the other party's last known email address.
- 21.2 Any notice that is posted shall be deemed to have been served, unless the contrary is shown, at the time when by the ordinary course of post, the notice would have been delivered.

22. Trusts

- 22.1 If the Customer at any time upon or subsequent to entering in to the Contract is acting in the capacity of trustee of any trust ("Trust") then whether or not the Supplier may have notice of the Trust, the Customer covenants with the Supplier as follows:
- (a) the Contract extends to all rights of indemnity which the Customer now or subsequently may have against the Trust and the trust fund;
 - (b) the Customer has full and complete power and authority under the Trust to enter into the Contract and the provisions of the Trust do not purport to exclude or take away the right of indemnity of the Customer against the Trust or the trust fund. The Customer will not release the right of indemnity or commit any breach of trust or be a party to any other action which might prejudice that right of indemnity;
 - (c) the Customer will not without consent in writing of the Supplier (the Supplier will not unreasonably withhold consent), cause, permit, or suffer to happen any of the following events:
 - (i) the removal, replacement or retirement of the Customer as trustee of the Trust;
 - (ii) any alteration to or variation of the terms of the Trust;
 - (iii) any advancement or distribution of capital of the Trust; or
 - (iv) any resettlement of the trust property.

23. General

- 23.1 Any dispute or difference arising as to the interpretation of these terms and conditions or as to any matter arising hereunder, shall be submitted to, and settled by, either adjudication in accordance with section 26 of the Construction Contracts Act 2002 and/or by arbitration in accordance with the Arbitration Act 1996 or its replacement(s).
- 23.2 The failure by either party to enforce any provision of these terms and conditions shall not be treated as a waiver of that provision, nor shall it affect that party's right to subsequently enforce that provision. If any provision of these terms and conditions shall be invalid, void, illegal or unenforceable the validity, existence, legality and enforceability of the remaining provisions shall not be affected, prejudiced or impaired.
- 23.3 These terms and conditions and any Contract to which they apply shall be governed by the laws of New Zealand and are subject to the jurisdiction of the courts of New Zealand.
- 23.4 Subject to the CGA, the Supplier shall be under no liability whatsoever to the Customer for any indirect and/or consequential loss and/or expense (including loss of profit) suffered by the Customer arising out of a breach by the Supplier of these terms and conditions (alternatively the Supplier's liability shall be limited to damages which under no circumstances shall exceed the Price of the Goods).
- 23.5 The Supplier may licence and/or assign all or any part of its rights and/or obligations under this Contract without the Customer's consent.
- 23.6 The Customer cannot licence or assign without the written approval of the Supplier.
- 23.7 The Supplier may elect to subcontract out any part of the Services but shall not be relieved from any liability or obligation under this Contract by so doing. Furthermore, the Customer agrees and understands that they have no authority to give any instruction to any of the Supplier's sub-contractors without the authority of the Supplier.
- 23.8 The Customer agrees that the Supplier may amend their general terms and conditions for subsequent future Contracts with the Customer by disclosing such to the Customer in writing. These changes shall be deemed to take effect from the date on which the Customer accepts such changes, or otherwise at such time as the Customer makes a further request for the Supplier to provide Goods to the Customer.
- 23.9 Neither party shall be liable for any default due to any act of God, war, terrorism, strike, lock-out, industrial action, fire, flood, storm, national or global pandemics and/or the implementation of regulation, directions, rules or measures being enforced by Governments or embargo, including but not limited to, any Government imposed border lockdowns (including, worldwide destination ports), etc, ("Force Majeure") or other event beyond the reasonable control of either party. This clause does not apply to a failure by the Customer to make a payment to the Supplier.
- 23.10 Both parties warrant that they have the power to enter into this Contract and have obtained all necessary authorisations to allow them to do so, they are not insolvent and that this Contract creates binding and valid legal obligations on them.



Innox Ltd
50c Kereone Road, RD1,
Morrinsville, Waikato
07 7880140
WWW: www.innox.co.nz
E-mail: orders@innox.co.nz